

4

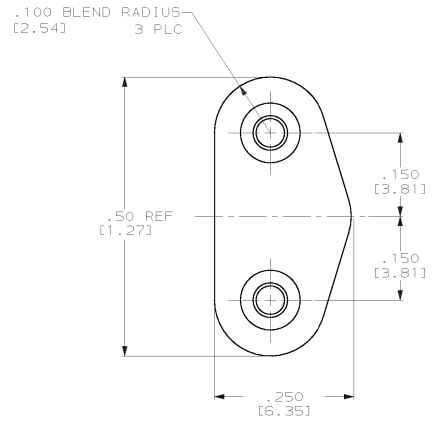
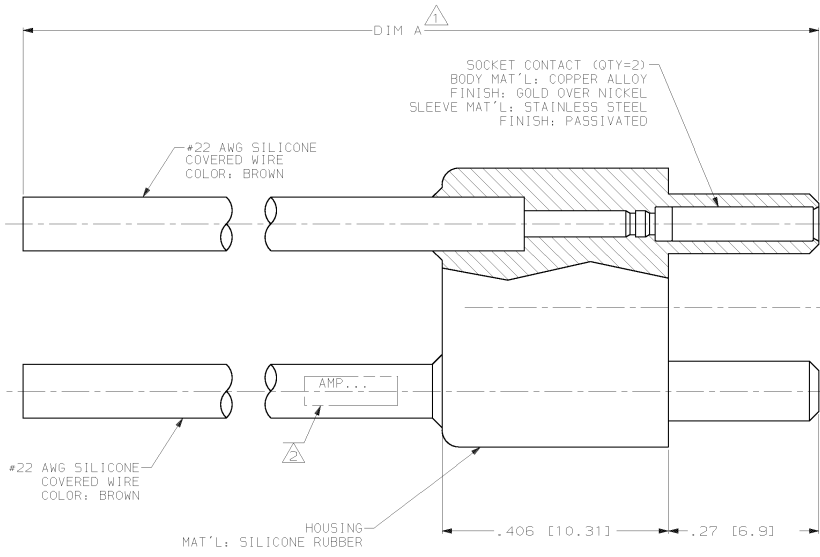
3

2

1

THIS DRAWING IS UNPUBLISHED. RELEASED FOR PUBLICATION
 (C) COPYRIGHT 19 BY AMP INCORPORATED. ALL RIGHTS RESERVED.

REV	DATE	BY	APP'D
C	1-99	CT	DE
D	1-00	JEB	DE



1 TOLERANCE: UP TO 24.00 [609.6] ±.12 [3.0]
 24.00 [609.6] AND UP ±1%
 2 AMP [INFO MARKED PER MIL-STD-130.]

16.00 [406.4]	866559-5
48.00 [1219.2]	866559-4
24.00 [609.6]	866559-3
18.00 [457.2]	866559-2
12.00 [304.8]	866559-1
A DIM	PART NO.

THIS DRAWING IS A CONTROLLED DOCUMENT.

DESIGNED BY	C. C. THOMAS	1/26/99
DRAWN BY	J. L. FARBY	1/26/99
CHECKED BY	J. L. FARBY	1/26/99
APPROVED BY		
PROJECT SPEC		
APPLICATION SPEC		
MATERIAL		
FINISH		
WEIGHT		

AMP AMP Incorporated
 Harrisburg, PA 17105-3608

PLUG, LGH, 2 POSN., MICRO-MIN

SIZE CASE CODE (DRAWING NO) RESTRICTED TO
 A2 00779 C-366559

CUSTOMER DRAWING SCALE: 8:1 SHEET 1 OF 1 REV D