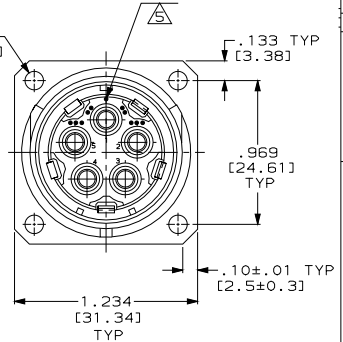
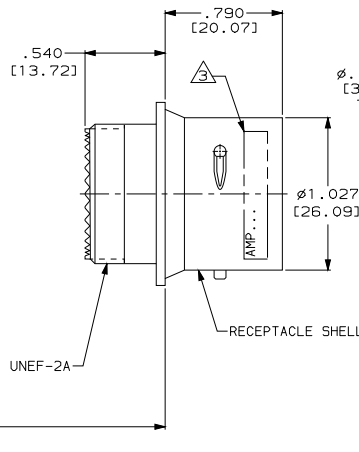
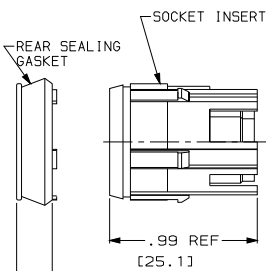
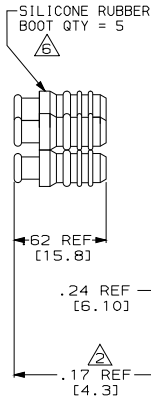
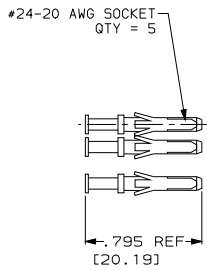


DRAWING MADE IN THIRD ANGLE PROJECTION  
 THIS DRAWING IS UNPUBLISHED. RELEASED FOR PUBLICATION, 19  
 © COPYRIGHT 19 BY AMP INCORPORATED. ALL INTERNATIONAL RIGHTS RESERVED.

| REVISIONS |      |   |   |      |     |                      |      |      |    |
|-----------|------|---|---|------|-----|----------------------|------|------|----|
| LOC       | DIST | P | F | ZONE | LTR | DESCRIPTION          | DATE | APPD | DE |
| DF        | 50   |   |   |      | L   | REV PER 0H14-0428-04 | CT   | 7-04 | DE |



- THIS RECEPTACLE REQUIRES A SIZE 16 MIL-C-38999F BACKSHELL OR EQUIVALENT STRAIN RELIEF.
- THE INDICATED DIMENSIONS APPLY AFTER ASSEMBLY. COMPLETE OVERALL DIMENSIONS AFTER ASSEMBLY DEPEND UPON THE SPECIFIC BACKSHELL OR STRAIN RELIEF USED.
- MARKED PER MIL-STD-130 USING BLACK INK. .09 [2.3] HIGH CHARS FOR -1 ONLY. .060 [1.52] HIGH CHARS FOR ALL OTHER DASH NUMBERS. SEE TABLE FOR SPECIAL MARKING.
- TO ASSEMBLE SEE INSTRUCTION SHEET #864886-4.
- SINGLE DOT POLARIZATION SHOWN FOR REFERENCE ONLY.

|           |          |                                 |                       |          |
|-----------|----------|---------------------------------|-----------------------|----------|
|           | LARGE    | (00779/AMP, 864062-5) DATE CODE | -                     | 864062-5 |
| OBSOLETE  | SMALL    | (00779/AMP, 864062-4) DATE CODE | 49956-848285-5B REV M | 864062-4 |
| OBSOLETE  | SMALL    | (00779/AMP, 864062-3) DATE CODE | 49956-848285-5A REV M | 864062-3 |
|           | SMALL    | (00779/AMP, 864062-2) DATE CODE | 49956-848285-5 REV M  | 864062-2 |
|           | SMALL    | (00779/AMP, 864062-1) DATE CODE | -                     | 864062-1 |
| BOOT SIZE | AMP INFO |                                 | CUSTOMER INFO         | PART NO. |

|  |  |                          |  |   |  |
|--|--|--------------------------|--|---|--|
| DO NOT SCALE PRINT. UNLESS SPECIFIED DIMENSIONS IN INCHES [mm] |  | DR 11-19-96 C.C.THOMAS   |  | AMP Incorporated<br>Harrisburg, PA 17105-3608 |  |
| TOLERANCES ON :  |  | CHK 11-26-96 C.SHELLY    |  |   |  |
| 2 PLC DEC ±.02 (0.5)   |  | APPD 11-26-96 C.SHELLY   |  | NAME  |  |
| 3 PLC DEC ±.010 (0.25)   |  | RLSE 11-26-96 C.C.THOMAS |  | RCPT KIT, 5 POSN., LGH                        |  |
| ANGLES ± -   |  | PRODUCT SPEC             |  | SIZE  |  |
| MATERIAL   |  | APPLICATION SPEC         |  | CAGE CODE                                     |  |
| FINISH   |  | -                        |  | 00779   |  |
| WEIGHT   |  | -                        |  | DRAWING NO                                    |  |
|  |  | -                        |  | C=864062                                      |  |
|  |  | SCALE 2:1                |  | SHEET 1 OF 1                                  |  |

THIS DRAWING IS A CONTROLLED DOCUMENT FOR AMP INCORPORATED. IT IS SUBJECT TO CHANGE AND THE CONTROLLING ENGINEERING ORGANIZATION SHOULD BE CONTACTED FOR THE LATEST REVISION.

AMP 1471-6 REV 3-92

CUSTOMER DRAWING

864062

A

D

C

B

A

D

C

B

A

D

C

B

A

D

C

B

A

D

C

B

A

D

C

B

A

D

C

B

A

D

C

B

A

D

C

B

A

D

C

B

A

D

C

B

A

D

C

B

A

D

C

B

A

D

C

B

A

D

C

B

A

D

C

B

A

D

C

B

A

D

C

B

A

D

C

B

A

D

C

B

A

D

C

B

A

D

C

B

A

D

C

B

A

D

C

B

A

D

C

B

A

D

C

B

A

D

C

B

A

D

C

B

A

D

C

B

A

D

C

B

A

D

C

B

A

D

C

B

A

D

C

B

A

D

C

B

A

D

C

B

A

D

C

B

A

D

C

B

A

D

C

B

A

D

C

B

A

D

C

B

A

D

C

B

A

D

C

B

A

D

C

B

A

D

C

B

A

D

C

B

A

D

C

B

A

D

C

B

A

D

C

B

A

D

C

B

A

D

C

B

A

D

C

B

A

D

C

B

A

D

C

B

A

D

C

B

A

D

C

B

A

D

C

B

A

D

C

B

A

D

C

B

A

D

C

B

A

D

C

B

A

D

C

B

A

D

C

B

A

D

C

B

A

D

C

B

A

D

C

B

A

D

C

B

A

D

C

B

A

D

C

B

A