

4

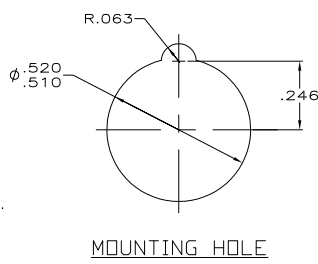
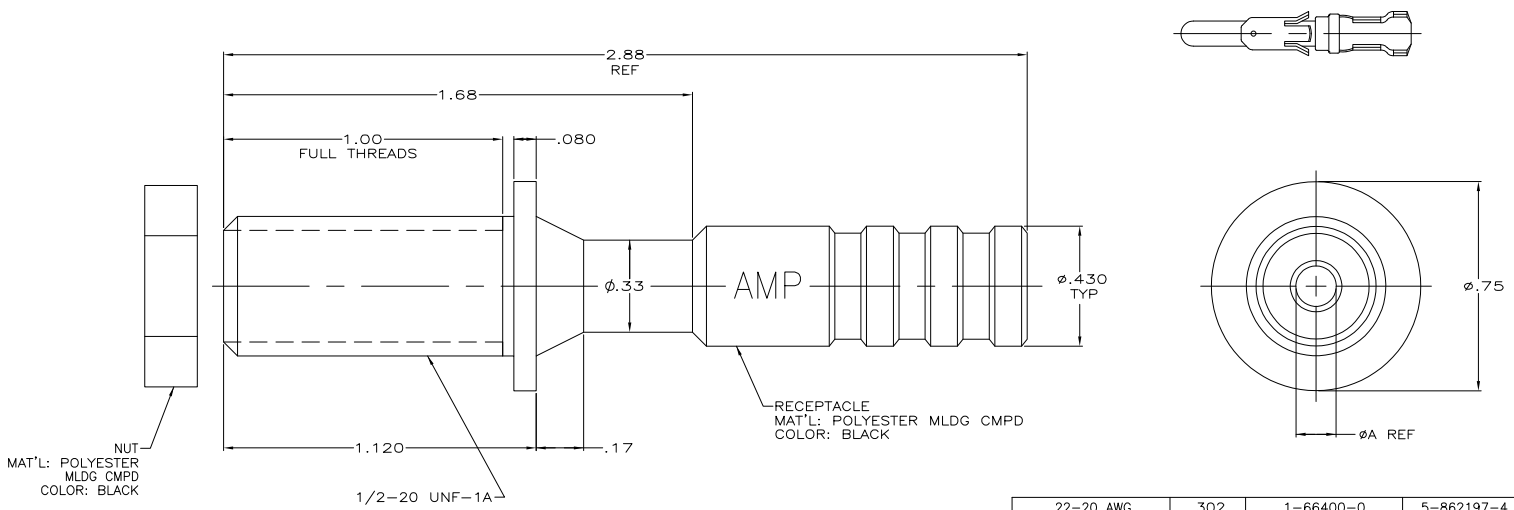
3

2

1

THIS DRAWING IS UNPUBLISHED. RELEASED FOR PUBLICATION - N/A
 © COPYRIGHT N/A BY TYCO ELECTRONICS CORPORATION. ALL RIGHTS RESERVED.

LOC	DIST	REVISIONS					
DF	SO	P	LTR	DESCRIPTION	DATE	MIN	APPD
		G		REV PER 0H14-0191-05	05-05	AA	DE



1. MAX VOLTAGE:
20 KVDC
8 KVDC RMS 60 HZ
2. USE AMP CRIMP TOOL: #90067-2
3. NUT AND PIN CONTACT SUPPLIED WITH KIT UNASSEMBLED.

22-20 AWG	.302	1-66400-0	5-862197-4	
18-16 AWG	.185	1-66099-5	5-862197-3	
18-16 AWG	.302	1-66099-5	5-862197-2	
22-20 AWG	.185	1-66400-0	5-862197-1	
OBSOLETE	14 AWG	.302	66361-2	862197-8
OBSOLETE	14 AWG	.185	66361-2	862197-7
-	-	.302	-	862197-6
-	-	.185	-	862197-5
22-20 AWG	.302	66400-1	862197-4	
18-16 AWG	.185	66099-2	862197-3	
18-16 AWG	.302	66099-2	862197-2	
22-20 AWG	.185	66400-1	862197-1	
WIRE GAGE REF	DIM A REF	PIN CONTACT TYPE III+ L.P. QTY = 1	PART NUMBER	

THIS DRAWING IS A CONTROLLED DOCUMENT. **DM** C.C. THOMAS 04-MAY-01
OK D. EASY 04-MAY-01
APPD D. EASY 04-MAY-01
PRODUCT SPEC D. EASY
APPLICATION SPEC -
HEIGHT -
MATERIAL -
FINISH -

TYCO Electronics Tyco Electronics Corporation
 Harrisburg, Pa 17105-3608

RECEPTACLE LGH

SIZE: **A2** CASE CODE: **00779** DRAWING NO: **862197** RESTRICTED TO: -
 CUSTOMER DRAWING SCALE: 4:1 SHEET 1 OF 1 REV G

AMP 1471-9 REV 31MM2000