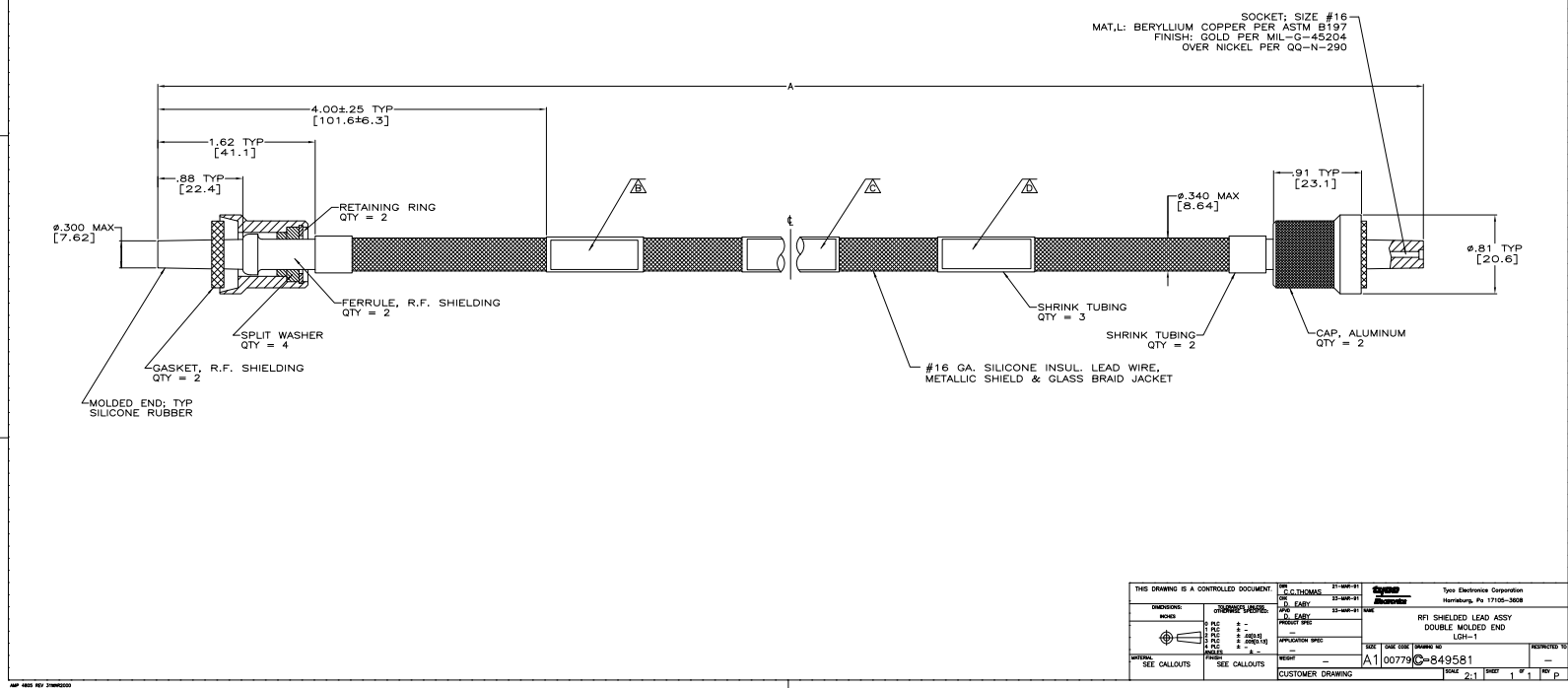


PART NO.	MATERIAL	DATE CODE	MATERIAL	DIM	FERRULE PLATING	STATUS	REVISIONS	
							REV	DESCRIPTION
849581-1	-	-	-	12.00 [304.8]	TIN-LEAD	OBSOLETE	DF	SO
849581-2	M/W B 226-A3J3 W8208	97942-582R371H01 00779 (DATE CODE) W2908	M/W B226-A2J3 D8207	48.00 [1219.2]	TIN-LEAD		P	REV PER QH14-0191-05
849581-3	-	-	-	32.00 [812.8]	TIN-LEAD	OBSOLETE		
849581-4	M/W B 226-A3J3 W8208	97942-582R371H04 00779 (DATE CODE) W2908	M/W B226-A2J3 D8207	38.00 [965.2]	TIN-LEAD			
849581-5	M/W B 226-A3J3 W8208	97942-582R371H03 00779 (DATE CODE) W2908	M/W B226-A2J3 D8207	45.00 [1143.0]	TIN-LEAD			
849581-6	M/W B 226-A3J3 W8208	97942-582R371H02 00779 (DATE CODE) W2908	M/W B226-A2J3 D8207	60.00 [1524.0]	TIN-LEAD			
849581-7	-	-	-	14.00 [355.6]	TIN-LEAD	OBSOLETE		
849581-8	M/W B 226-A3J3 W8208	97942-582R371H06 00779 (DATE CODE) W8208	M/W B226-A2J3 D8207	45.00 [1143.0]	TIN-LEAD			
849581-9	M/W B 226-A3J3 W8208	97942-582R371H07 00779 (DATE CODE) W8208	M/W B226-A2J3 D8207	38.00 [965.2]	TIN-LEAD			
5-849581-4	-	-	-	38.00 [965.2]	TIN			
5-849581-5	-	-	-	45.00 [1143.0]	TIN			
5-849581-8	-	-	-	45.00 [1143.0]	TIN			

- △ TOLERANCE OF LEAD LENGTH:
UP TO 24 INCHES [609.6] = ±.12 [±3.0]
24 INCHES [609.6] & UP = ±.1X
- SPECIAL MARKING B, C & D MARKED PER MIL-STD-1285.
 - TO MATE WITH AMP LGH-1
RECEPTACLE WITH .88 [22.4] BARREL DEPTH.
 - OPERATING VOLTAGE: 20 KVDC AT 0 TO 70,000 FEET, -55°C TO 125°C.



THIS DRAWING IS A CONTROLLED DOCUMENT.		REV. C. THOMAS 21-WP-31	DATE 03-20-05	REV. E. EARLY 23-WP-31	DATE 03-20-05
DESIGNER: [Signature]		DR. EARLY 23-WP-31	DATE 03-20-05	DR. EARLY 23-WP-31	DATE 03-20-05
CHECKED: [Signature]		DR. EARLY 23-WP-31	DATE 03-20-05	DR. EARLY 23-WP-31	DATE 03-20-05
APPROVED: [Signature]		DR. EARLY 23-WP-31	DATE 03-20-05	DR. EARLY 23-WP-31	DATE 03-20-05
SEE CALLOUTS		SEE CALLOUTS		SEE CALLOUTS	
CUSTOMER DRAWING		A100779G-849581		REV. 1	