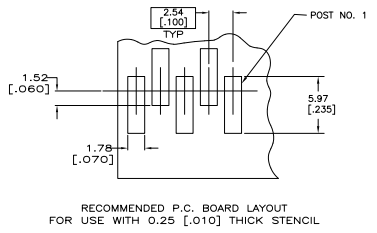
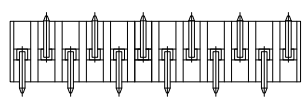
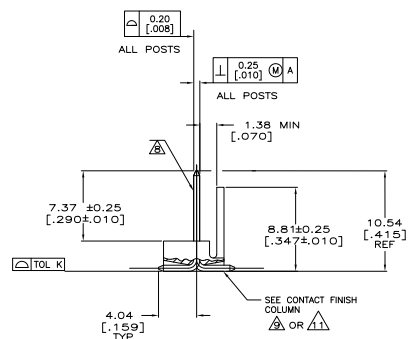
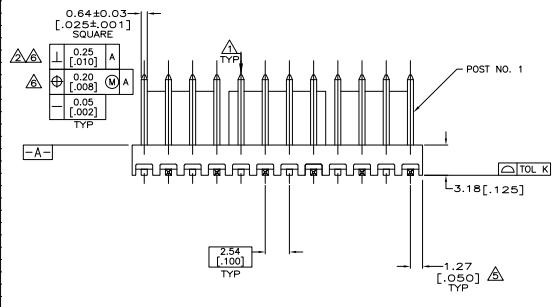
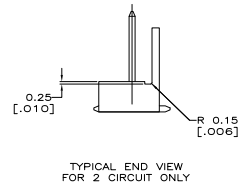
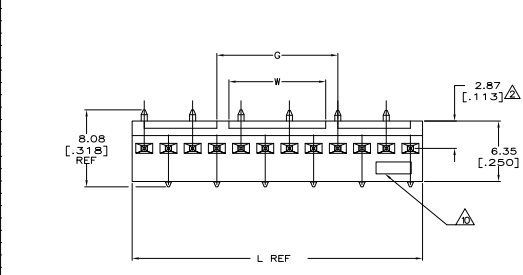


REV	DATE	DESCRIPTION	BY	CHK	APP
CM 00					
N		REVISED PER EDD-11-021838			



- △ POST TO WITHSTAND 1.3 NEWTONS (3 LBS) MIN. AXIAL FORCE. IN DIRECTION SHOWN WITHOUT DISLODGING.
- △ MEASURED AT SURFACE [A-A]
- 3. PARTS COMPLY WITH AMP SOLDERABILITY SPEC. NO. 109-11-2.
- △ MATERIAL:
HOUSING: NYLON, 4/6, HIGH TEMP. BLACK.
POST: COPPER ALLOY, (SEE NOTES 8, 9 & 13 FOR PLATING).
- △ COORDINATE DIMENSION APPLIES FROM CENTER OF ACTUAL FEATURE.
- △ POSTS TO BE MEASURED WHEN STRIP IS HELD FLAT.
- 7. DIMENSIONS IN BRACKETS ARE IN INCHES.
- △ PLATING: GOLD PLATE AREA, 0.00076 [0.00030] GOLD OR 0.0008 [0.0003] MIN GOLD FLASH OVER 0.0008 [0.00027] PALLADIUM NICKEL, PER TE CONNECTIVITY'S DISCRETION, ALL SIDES, OVER NICKEL UNDERPLATE, 0.00127 [0.00050] MIN, ALL SIDES AND ENTIRE LENGTH OF POST.
- △ BRIGHT TIN/LEAD (93/7) PLATE AREA, 0.00381-0.00889 [0.00150-0.00350] THICK, ALL FOUR SIDES, 3.56[140] MIN.
- △ TE LOGO AND UL AND CSA TRADEMARKS TO APPEAR ON THIS SURFACE.
- △ MATTE TIN PLATE AREA, 0.00381-0.00889 [0.00150-0.00350] THICK, ALL FOUR SIDES, 3.56[140] MIN.
- △ ALL FOUR SIDES, 3.56[140] MIN.
- △ OBSOLETE PARTS: OBSOLETE CIS STREAMLINING PER D.RENAUD/D.SINISI

POST FINISH	TOL K	W	G	L	NO OF POSITIONS	PART NUMBER		
0.15 .006	10.16	.400	12.70	.500	30.48	1.200	12	4-647108-2
0.15 .006	-	-	10.16	.400	27.94	1.100	11	4-647108-1
0.15 .006	-	-	7.62	.300	25.40	1.000	10	4-647108-0
0.15 .006	-	-	5.08	.200	22.86	.900	9	3-647108-9
0.15 .006	-	-	2.54	.100	20.32	.800	8	3-647108-8
0.15 .006	-	-	-	-	17.78	.700	7	3-647108-7
0.15 .006	-	-	-	-	15.24	.600	6	3-647108-6
0.15 .006	-	-	-	-	12.70	.500	5	3-647108-5
0.15 .006	-	-	-	-	10.16	.400	4	3-647108-4
0.15 .006	-	-	-	-	7.62	.300	3	3-647108-3
0.15 .006	-	-	-	-	5.08	.200	2	3-647108-2
0.15 .006	10.16	.400	12.70	.500	30.48	1.200	12	1-647108-2
0.15 .006	-	-	10.16	.400	27.94	1.100	11	1-647108-1
0.15 .006	-	-	7.62	.300	25.40	1.000	10	1-647108-0
0.15 .006	-	-	5.08	.200	22.86	.900	9	647108-9
0.15 .006	-	-	2.54	.100	20.32	.800	8	647108-8
0.15 .006	-	-	-	-	17.78	.700	7	647108-7
0.15 .006	-	-	-	-	15.24	.600	6	647108-6
0.15 .006	-	-	-	-	12.70	.500	5	647108-5
0.15 .006	-	-	-	-	10.16	.400	4	647108-4
0.15 .006	-	-	-	-	7.62	.300	3	647108-3
0.15 .006	-	-	-	-	5.08	.200	2	647108-2

△ SUPERS EDED

THIS DRAWING IS A CONTROLLED DOCUMENT. THE HOOPER 35-78-2003

TE Connectivity
 MTA-100 HEADER ASSEMBLY, SURFACE MOUNT, POLARIZED, STRAIGHT .025 SQUARE POST, POST, 0.00030 GOLD

DATE: 01/07/99 DRAWING NO: A100779 G=647108

CUSTOMER DRAWING