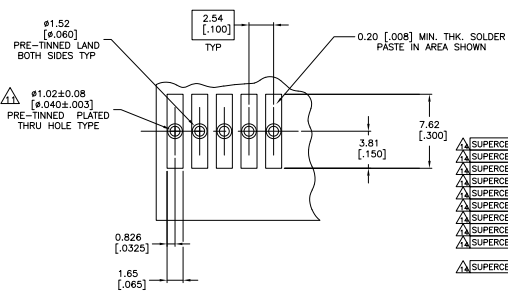
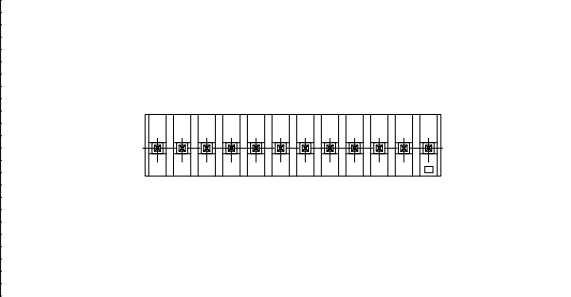
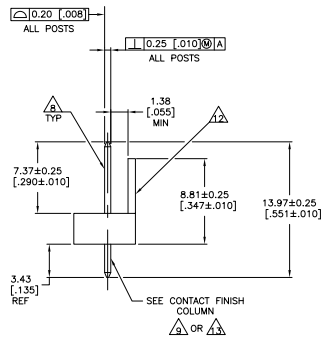
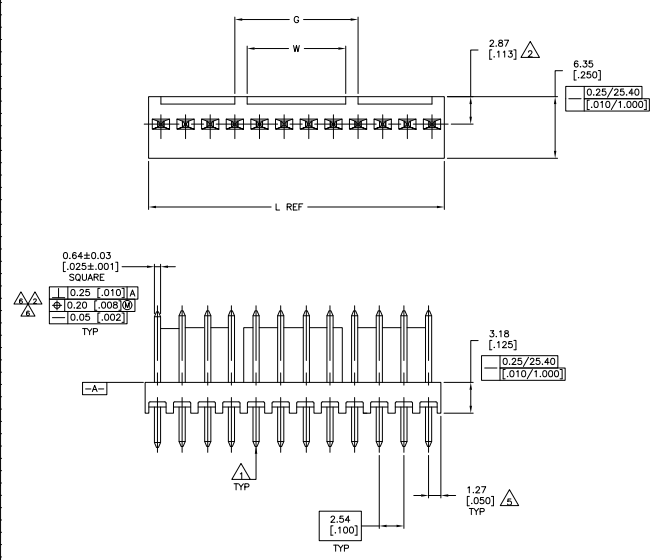


THIS DRAWING IS UNPUBLISHED
 ALL RIGHTS RESERVED

REV	DATE	DESCRIPTION	BY	CHK	APP
0					
M		REVISED PER EDD-11-614381			



RECOMMENDED MOUNTING HOLE PATTERN FOR 1.57±0.20 [0.062±0.008] THICK P.C. BOARD

- △ POST TO WITHSTAND 13 NEWTONS (3 LBS) MIN. AXIAL FORCE IN DIRECTION SHOWN WITHOUT DISLODGING.
- △ MEASURED AT SURFACE [A-B].
- 3 PARTS COMPLY WITH AMP SOLDERABILITY SPEC. NO. 109-11-2.
- △ MATERIAL:
HOUSING: NYLON 4/6, HIGH TEMP. BLACK
POST: COPPER ALLOY, (SEE NOTES 8, 9 & 13 FOR PLATING).
- △ COORDINATE DIMENSION APPLIES FROM CENTER OF ACTUAL FEATURE.
- △ POSTS TO BE MEASURED WHEN STRIP IS HELD FLAT.
- 7 DIMENSIONS IN BRACKETS ARE IN INCHES.
- △ PLATING: GOLD PLATE AREA, 0.00038 [0.00012] GOLD OR 0.00008 [0.00003] MIN GOLD FLASH OVER 0.00050 [0.00012] PALLADIUM NICKEL, PER TE CONNECTIVITY'S DISCRETION, ALL SIDES, OVER NICKEL UNDERPLATE, 0.00127 [0.00050] MIN, ALL SIDES AND ENTIRE LENGTH OF POST.
- △ BRIGHT TIN/LEAD (93/7) PLATE AREA, 0.00381-0.00889 [0.00150-0.00350] THICK, ALL FOUR SIDES, 3.56[.140] MIN.
- △ TOLERANCES APPLY TO SOLDER SIDE OF BOARD.
- △ ONE HOLE MAY BE UNDERSIZED 0.81-0.89 [0.032-0.035] DIAMETER FOR ASSEMBLY RETENTION DURING PROCESSING.
- △ AMP LOGO AND UL AND CSA TRADEMARKS TO APPEAR ON THIS SURFACE.
- △ MATTE TIN PLATE AREA, 0.00381-0.00889[0.00150-0.00350] THICK, ALL FOUR SIDES, 3.56[.140] MIN.
- △ OBSOLETE PARTS: OBSOLETE CIS STREAMLINING PER D.RENAUD/D.SINISI

POST FINISH	W	L	G	NO. OF POSITIONS	PART NUMBER			
	10.16	.400	12.70	.500	30.48	1.200	12	4-647075-2
	-	-	10.16	.400	27.94	1.100	11	4-647075-1
	-	-	7.62	.300	25.40	1.000	10	4-647075-0
	-	-	5.08	.200	22.86	.900	9	3-647075-9
	-	-	2.54	.100	20.32	.800	8	3-647075-8
	-	-	-	-	17.78	.700	7	3-647075-7
	-	-	-	-	15.24	.600	6	3-647075-6
	-	-	-	-	12.70	.500	5	3-647075-5
	-	-	-	-	10.16	.400	4	3-647075-4
	-	-	-	-	7.62	.300	3	3-647075-3
	-	-	-	-	5.08	.200	2	3-647075-2
	10.16	.400	12.70	.500	30.48	1.200	12	1-647075-2
	-	-	10.16	.400	27.94	1.100	11	1-647075-1
	-	-	7.62	.300	25.40	1.000	10	1-647075-0
	-	-	5.08	.200	22.86	.900	9	647075-9
	-	-	2.54	.100	20.32	.800	8	647075-8
	-	-	-	-	17.78	.700	7	647075-7
	-	-	-	-	15.24	.600	6	647075-6
	-	-	-	-	12.70	.500	5	647075-5
	-	-	-	-	10.16	.400	4	647075-4
	-	-	-	-	7.62	.300	3	647075-3
	-	-	-	-	5.08	.200	2	647075-2

THIS DRAWING IS A CONTROLLED DOCUMENT. THE HOOPER (SERIES) BOARD IS THE PROPERTY OF TE CONNECTIVITY. IT IS TO BE KEPT IN THE ORIGINAL ENVELOPE AND NOT REPRODUCED OR COPIED IN ANY MANNER WITHOUT THE WRITTEN PERMISSION OF TE CONNECTIVITY.

TE Connectivity

MTA-100 HEADER ASSEMBLY, HIGH TEMPERATURE, POLARIZED, STRAIGHT .025 SQUARE, POST, .000015 GOLD

SIZE: 5.1 SHEET 1 OF 1

CUSTOMER DRAWING A100779 G=647075