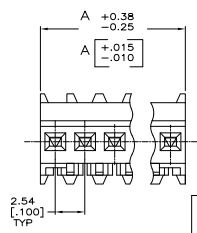
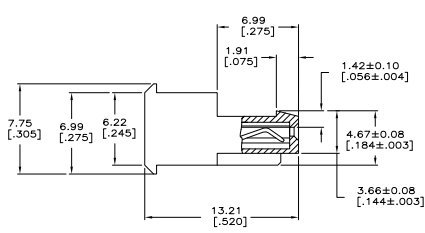
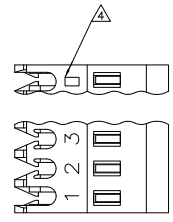


THIS DRAWING IS UNPUBLISHED  
 ALL RIGHTS RESERVED

REV	DATE	DESCRIPTION	BY	CHK	APP
00		REVISED PER EDD-11-013373			



- △ MATERIAL: CONNECTOR-NYLON UL94V-2 (GREEN).  
 CONTACTS-0.30 [.012] THICK COPPER ALLOY  
 0.00076 [.000030] GOLD IN OR 0.00076[.000030]  
 TOTAL GOLD FLASH OVER PALLADIUM NICKEL,  
 PER TE CONNECTIVITY'S DISCRETION, CONTACT AREA  
 WITH BRIGHT TIN-LEAD FOR 641244-2 THRU  
 1-641244-4, MATTE WHISKER MITIGATED TIN  
 FOR 3-641244-2 THRU 4-641244-4 OVER  
 NICKEL UNDERPLATE.
- CONTACTS ACCEPT 28 AWG WIRE WITH 1.52 [.060] MAX INSULATION DIAMETER.
  - CONTACTS MUST ACCEPT 0.64±0.03 [.025±.001] SQUARE POST AND REMAIN LOCKED IN POSITION.
- △ IDENTIFICATION NUMBER FOR LAST CIRCUIT MAY NOT APPEAR ON ALL ASSEMBLIES.
- DIMENSIONS IN BRACKETS ARE IN INCHES.
  - HOUSING FEATURES ARE: FEED THRU WITH LOCKING RAMP.
- △ OBSOLETE PARTS: OBSOLETE CIS STREAMLINING PER D.RENAUD/D.SINISI

DIM A	NO. OF POSN	ASSEMBLY
71.12 [2.800]	28	5-641244-8
68.58 [2.700]	27	5-641244-7
66.04 [2.600]	26	5-641244-6
63.50 [2.500]	25	5-641244-5
60.96 [2.400]	24	5-641244-4
58.42 [2.300]	23	5-641244-3
55.88 [2.200]	22	5-641244-2
53.34 [2.100]	21	5-641244-1
50.80 [2.000]	20	5-641244-0
48.26 [1.900]	19	4-641244-9
45.72 [1.800]	18	4-641244-8
43.18 [1.700]	17	4-641244-7
40.64 [1.600]	16	4-641244-6
38.10 [1.500]	15	4-641244-5
35.56 [1.400]	14	4-641244-4
33.02 [1.300]	13	4-641244-3
30.48 [1.200]	12	4-641244-2
27.94 [1.100]	11	4-641244-1
25.40 [1.000]	10	4-641244-0
22.86 [.900]	9	3-641244-9
20.32 [.800]	8	3-641244-8
17.78 [.700]	7	3-641244-7
15.24 [.600]	6	3-641244-6
12.70 [.500]	5	3-641244-5
10.16 [.400]	4	3-641244-4
7.62 [.300]	3	3-641244-3
5.08 [.200]	2	3-641244-2

DIM A	NO. OF POSN	ASSEMBLY
71.12 [2.800]	28	2-641244-8
68.58 [2.700]	27	2-641244-7
66.04 [2.600]	26	2-641244-6
63.50 [2.500]	25	2-641244-5
60.96 [2.400]	24	2-641244-4
58.42 [2.300]	23	2-641244-3
55.88 [2.200]	22	2-641244-2
53.34 [2.100]	21	2-641244-1
50.80 [2.000]	20	2-641244-0
48.26 [1.900]	19	1-641244-9
45.72 [1.800]	18	1-641244-8
43.18 [1.700]	17	1-641244-7
40.64 [1.600]	16	1-641244-6
38.10 [1.500]	15	1-641244-5
35.56 [1.400]	14	1-641244-4
33.02 [1.300]	13	1-641244-3
30.48 [1.200]	12	1-641244-2
27.94 [1.100]	11	1-641244-1
25.40 [1.000]	10	1-641244-0
22.86 [.900]	9	641244-9
20.32 [.800]	8	641244-8
17.78 [.700]	7	641244-7
15.24 [.600]	6	641244-6
12.70 [.500]	5	641244-5
10.16 [.400]	4	641244-4
7.62 [.300]	3	641244-3
5.08 [.200]	2	641244-2

△ SUPERCEDED  
 CONTAINS LEAD  
 △

METRIC

THIS DRAWING IS A CONTROLLED DOCUMENT. **TE CONNECTIVITY**

DRAWING NO: 108-1050  
 REV: 114-1019  
 DATE: 000779  
 CUSTOMER DRAWING: 641244

MTA .100 CONNECTOR ASSEMBLY,  
 28 AWG, STANDARD

SIZE: 6.1  
 SHEET: 1 OF 1