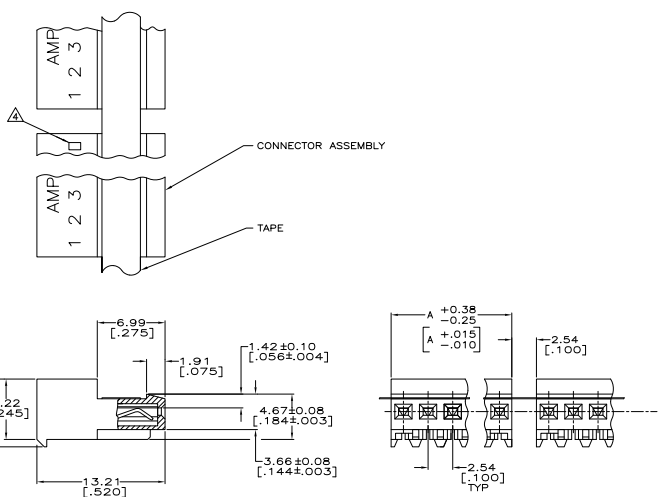


REV	DATE	DESCRIPTION	BY	CHK	APP
U	22FEB07	REVISED PER ECO-07-003722	KW	DB	
U1	10OCT09	REVISED PER ECO-09-023313	KK	AEG	

- 1 MATERIAL: CONNECTOR-NYLON UL94V-2 (GREEN).
 CONTACTS-0.30 [.012] THICK COPPER ALLOY
 BRIGHT TIN-LEAD 0.00203 [.000080] MINIMUM THICK FOR CONTACTS
 640471-2 THRU 2-640471-8,
 MATTE WHISKER MITIGATED TIN PLATE 0.00203 [.000080] MINIMUM THICK OVER
 NICKEL UNDERPLATE FOR CONTACTS 3-640471-2 THRU 5-640471-8.
- 2. CONTACTS ACCEPT 28 AWG WIRE WITH 1.52 [.060] MAXIMUM INSULATION DIAMETER.
- 3. CONTACTS MUST ACCEPT 0.64±0.03 [.025±.001] SQUARE POST AND REMAIN LOCKED IN POSITION.
- 4 IDENTIFICATION NUMBER FOR LAST CIRCUIT MAY NOT APPEAR ON ALL ASSEMBLIES.
- 5. DIMENSIONS IN BRACKETS ARE IN INCHES.
- 6. HOUSING FEATURES ARE: CLOSED END WITH LOCKING RAMP.
- 7 OBSOLETE PARTS: OBSOLETE CIS STREAMLINING PER D.RENAUD/D.SINISI



DIM A	NO.OF POSN	ASSEMBLY
71.12 [2.800]	28	5-640471-8
68.58 [2.700]	27	5-640471-7
66.04 [2.600]	26	5-640471-6
63.50 [2.500]	25	5-640471-5
60.96 [2.400]	24	5-640471-4
58.42 [2.300]	23	5-640471-3
55.88 [2.200]	22	5-640471-2
53.34 [2.100]	21	5-640471-1
50.80 [2.000]	20	5-640471-0
48.26 [1.900]	19	4-640471-9
45.72 [1.800]	18	4-640471-8
43.18 [1.700]	17	4-640471-7
40.64 [1.600]	16	4-640471-6
38.10 [1.500]	15	4-640471-5
35.56 [1.400]	14	4-640471-4
33.02 [1.300]	13	4-640471-3
30.48 [1.200]	12	4-640471-2
27.94 [1.100]	11	4-640471-1
25.40 [1.000]	10	4-640471-0
22.86 [.900]	9	3-640471-9
20.32 [.800]	8	3-640471-8
17.78 [.700]	7	3-640471-7
15.24 [.600]	6	3-640471-6
12.70 [.500]	5	3-640471-5
10.16 [.400]	4	3-640471-4
7.62 [.300]	3	3-640471-3
5.08 [.200]	2	3-640471-2

DIM A	NO.OF POSN	ASSEMBLY
71.12 [2.800]	28	2-640471-8
68.58 [2.700]	27	2-640471-7
66.04 [2.600]	26	2-640471-6
63.50 [2.500]	25	2-640471-5
60.96 [2.400]	24	2-640471-4
58.42 [2.300]	23	2-640471-3
55.88 [2.200]	22	2-640471-2
53.34 [2.100]	21	2-640471-1
50.80 [2.000]	20	2-640471-0
48.26 [1.900]	19	1-640471-9
45.72 [1.800]	18	1-640471-8
43.18 [1.700]	17	1-640471-7
40.64 [1.600]	16	1-640471-6
38.10 [1.500]	15	1-640471-5
35.56 [1.400]	14	1-640471-4
33.02 [1.300]	13	1-640471-3
30.48 [1.200]	12	1-640471-2
27.94 [1.100]	11	1-640471-1
25.40 [1.000]	10	1-640471-0
22.86 [.900]	9	640471-9
20.32 [.800]	8	640471-8
17.78 [.700]	7	640471-7
15.24 [.600]	6	640471-6
12.70 [.500]	5	640471-5
10.16 [.400]	4	640471-4
7.62 [.300]	3	640471-3
5.08 [.200]	2	640471-2



THIS DRAWING IS A CONTROLLED DOCUMENT. METRIC ELECTRONICS CORPORATION, Harrisburg, Pa 17105-3608

DATE: 108-1050
 REV: 114-1019
 CUSTOMER DRAWING: A100779

SIZE: 5.1
 SHEET: 1 OF 1