

4

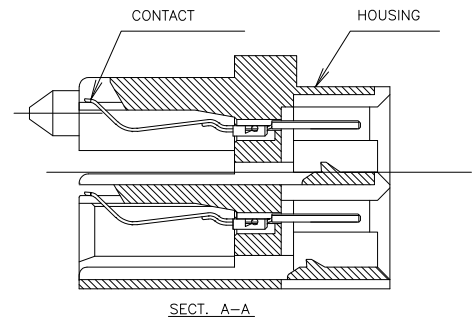
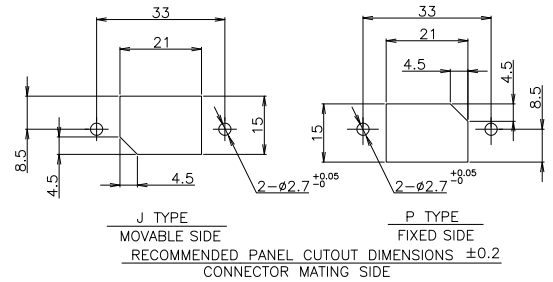
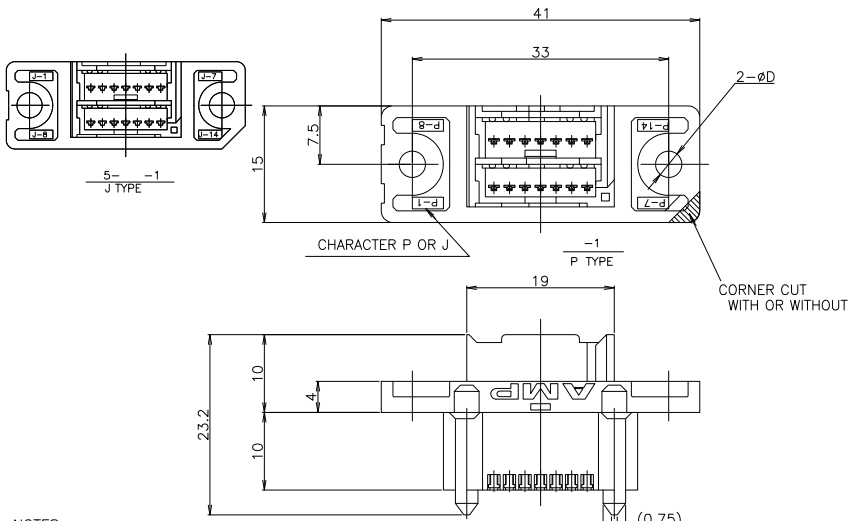
3

2

1

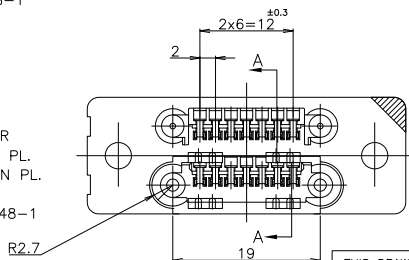
THIS DRAWING IS UNPUBLISHED. RELEASED FOR PUBLICATION
 © COPYRIGHT - By - ALL RIGHTS RESERVED.

LOC	DIST	REVISIONS			
P	LTR	DESCRIPTION	DATE	DWN	APVD
ES	00				
	A1	REVISED PER ECO-11-005033	28MAR11	RK	HMR



NOTES:

- 1 APPLIED USE THRED P/N: 176848-1
- △ PRODUCT SPEC.: 108-60021
- △ MATERIAL:
HOUSING: THERMOPLASTIC
UL94V-0(COLOR: SEE TABLE)
CONTACT: COPPER ALLOY
- △ FINISH:
CONTACT: NICKEL PL. ALL OVER
CONTACT AREA: GOLD PL.
POST AREA: MATTE TIN PL.
- △ THIS FLOATING ALLOWANCE
USED TAPPING SCREW P/N: 176848-1



HOUSING COLOR	LONGITUDINAL	LATERAL	CUT	4.4	↑	6-	↑	-1
GRAY	0.6	1.0	CUT	4.4	↑	6-	↑	-1
BLACK	0.6	1.0	CUT	4.4	J	5-		-1
GRAY	#	#	#	3.4	↑	1-		-1
BLACK	#	#	#	3.4	P			292177-1

THIS DRAWING IS A CONTROLLED DOCUMENT.

DIMENSIONS:	TOLERANCES UNLESS OTHERWISE SPECIFIED:
mm	
0 PLC	± -
1 PLC	± -
2 PLC	± -
3 PLC	± -
4 PLC	± -
ANGLES	± -

TOLERANCE	
10 ≥ *	: ±0.2
30 ≥ * > 10	: ±0.25
100 ≥ * > 30	: ±0.3
ANGLE	: ±3°

SEE NOTE 3
 SEE NOTE 4

TE Connectivity

14P MINI-DRAWER CONNECTOR

SIZE: A3 CAGE CODE: 00779 DRAWING NO: C-292177 RESTRICTED TO: -

CUSTOMER DRAWING SCALE: NTS SHEET: 1 OF 1 REV: A1