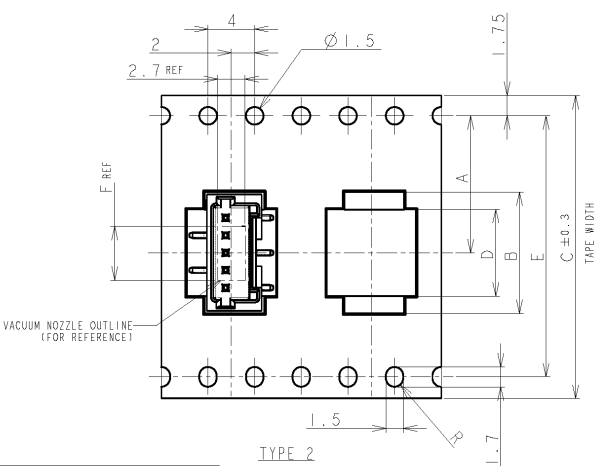
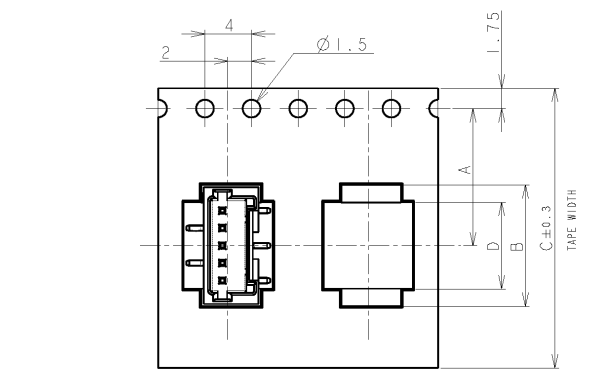


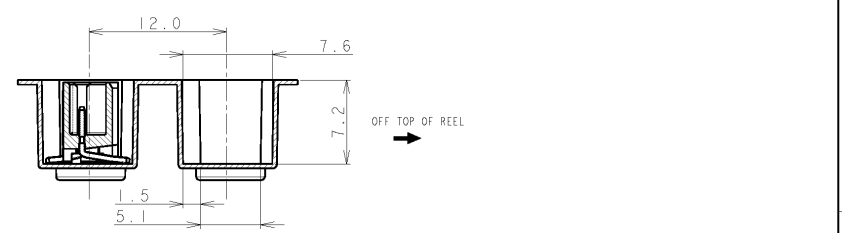
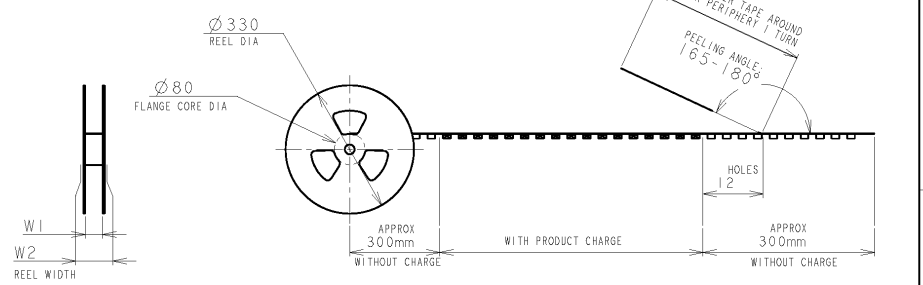
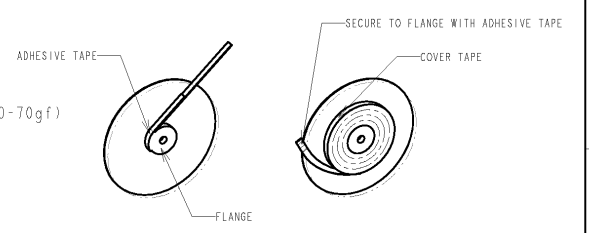
LOC	DIST	REVISIONS					
FB	00	P	LTR	DESCRIPTION	DATE	DWN	APVD
		B1		REVISED PER ECO-11-005033	2APR11	RK	HMR



TOLERANCES UNLESS OTHERWISE SPECIFIED:

10 >	±0.2
30 > * > 10	±0.25
100 > * > 30	±0.3
ANGLE	±3°

NOTE:
 1. PEELING STRENGTH: 0.20-0.69N (20-70gf)
 PEELING ANGLE: 165-180°
 PEELING SPEED: 300mm/MINUTE.



WIND COVER TAPE AROUND OUTER PERIPHERY 1 TURN
 PEELING ANGLE: 165-180°

DIMENSIONS: mm	TOLERANCES UNLESS OTHERWISE SPECIFIED: 0 PLC ± 1 PLC ± 2 PLC ± 3 PLC ± 4 PDC ± ANGLES ±	DWN	S. XU	31JAN03	STE TE Connectivity							
		CHK	S. YAO	31JAN03								
MATERIAL	FINISH	APVD	T. SASAKI	31JAN03	NAME AMP Mini Common Terminated (CT) Connector 1.5mm PITCH SINGLE ROW POST HDR ASS'Y (V) SMT TYPE WITH BOSS, EMBOSS TAPE PACKAGED							
		PRODUCT SPEC	108-60018									
		APPLICATION SPEC	114-5223		SIZE	A3	CAGE CODE	00779	DRAWING NO	C-292230	RESTRICTED TO	
		WEIGHT			CUSTOMER DRAWING		SCALE	NON	SHEET	1 of 4	REV	B1

RELEASED FOR PUBLICATION

ALL RIGHTS RESERVED.

THIS DRAWING IS UNPUBLISHED.

COPYRIGHT BY

LOC	DIST	REVISIONS					
FB	00	P	LTR	DESCRIPTION	DATE	DWN	APVD
				SEE SHEET 1			

TAPE TYPE	TYPE	DIMENSIONS							QTY/ REEL	POS	COLOR	ON TAPE P/N		
		W2	W1	F	E	D	C	B					A	
	TYPE 2	49.5	45.5	6.2	40.4	29.9	44	32.9	20.2±0.15	500	20	BLACK	7-292230-0	
		49.5	45.5	4.7	40.4	28.4	44	31.4		500	19		6-292230-9	
		49.5	45.5	6.2	40.4	26.9	44	29.9		500	18		6-292230-8	
		49.5	45.5	4.7	40.4	25.4	44	28.4		500	17		6-292230-7	
		49.5	45.5	6.2	40.4	23.9	44	26.9		500	16		6-292230-6	
		49.5	45.5	4.7	40.4	22.4	44	25.4		500	15		6-292230-5	
		49.5	45.5	6.2	40.4	20.9	44	23.9		500	14		6-292230-4	
		49.5	45.5	4.7	40.4	19.4	44	22.4		500	13		6-292230-3	
		37.5	33.5	6.2	28.4	17.9	32	20.9		14.2	500		12	6-292230-2
		37.5	33.5	4.7	28.4	16.4	32	19.4		14.2	500		11	6-292230-1
		37.5	33.5	6.2	28.4	14.9	32	17.9		14.2	500		10	6-292230-0
		37.5	33.5	4.7	28.4	13.4	32	16.4		14.2	500		9	5-292230-9
	TYPE 1	29.5	25.5	6.2	-	11.9	24	14.9	11.5	500	8	5-292230-8		
		29.5	25.5	4.7	-	10.4	24	13.4	11.5	500	7	5-292230-7		
		29.5	25.5	6.2	-	8.9	24	11.9	11.5	500	6	5-292230-6		
		29.5	25.5	4.7	-	7.4	24	10.4	11.5	500	5	5-292230-5		
		21.5	17.5	6.2	-	5.9	16	8.9	7.5	500	4	5-292230-4		
		21.5	17.5	4.7	-	4.4	16	7.4	7.5	500	3	5-292230-3		
		21.5	17.5	2.8	-	2.9	16	5.9	7.5	500	2	-		

TAPE TYPE	TYPE	DIMENSIONS							QTY/ REEL	POS	COLOR	ON TAPE P/N		
		W2	W1	F	E	D	C	B					A	
	TYPE 2	49.5	45.5	6.2	40.4	29.9	44	32.9	20.2±0.15	500	20	BEIGE	2-292230-0	
		49.5	45.5	4.7	40.4	28.4	44	31.4		500	19		1-292230-9	
		49.5	45.5	6.2	40.4	26.9	44	29.9		500	18		1-292230-8	
		49.5	45.5	4.7	40.4	25.4	44	28.4		500	17		1-292230-7	
		49.5	45.5	6.2	40.4	23.9	44	26.9		500	16		1-292230-6	
		49.5	45.5	4.7	40.4	22.4	44	25.4		500	15		1-292230-5	
		49.5	45.5	6.2	40.4	20.9	44	23.9		500	14		1-292230-4	
		49.5	45.5	4.7	40.4	19.4	44	22.4		500	13		1-292230-3	
		37.5	33.5	6.2	28.4	17.9	32	20.9		14.2	500		12	1-292230-2
		37.5	33.5	4.7	28.4	16.4	32	19.4		14.2	500		11	1-292230-1
		37.5	33.5	6.2	28.4	14.9	32	17.9		14.2	500		10	1-292230-0
		37.5	33.5	4.7	28.4	13.4	32	16.4		14.2	500		9	292230-9
	TYPE 1	29.5	25.5	6.2	-	11.9	24	14.9	11.5	500	8	292230-8		
		29.5	25.5	4.7	-	10.4	24	13.4	11.5	500	7	292230-7		
		29.5	25.5	6.2	-	8.9	24	11.9	11.5	500	6	292230-6		
		29.5	25.5	4.7	-	7.4	24	10.4	11.5	500	5	292230-5		
		21.5	17.5	6.2	-	5.9	16	8.9	7.5	500	4	292230-4		
		21.5	17.5	4.7	-	4.4	16	7.4	7.5	500	3	292230-3		
		21.5	17.5	2.8	-	2.9	16	5.9	7.5	500	2	-		

DIMENSIONS: mm

TOLERANCES UNLESS OTHERWISE SPECIFIED:

0 PLC	±
1 PLC	±0.1
2 PLC	±0.01
3 PLC	±0.001
4 PLC	±0.0001
ANGLES	±

DWN

CHK

APVD

PRODUCT SPEC
SEE SHEET 1 OF 4

APPLICATION SPEC
SEE SHEET 1 OF 4

WEIGHT

CUSTOMER DRAWING

MATERIAL

FINISH

TE Connectivity

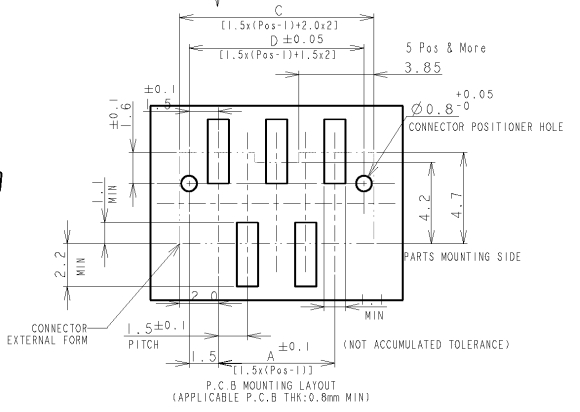
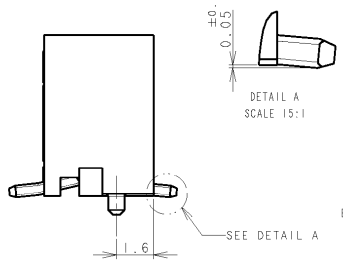
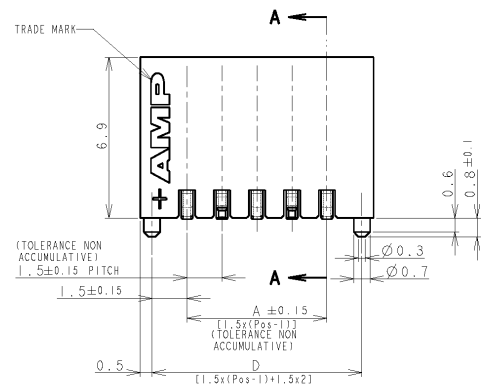
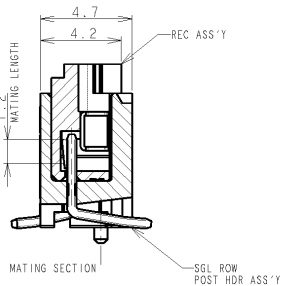
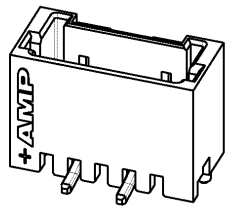
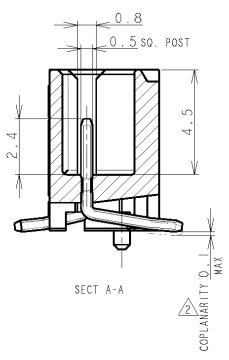
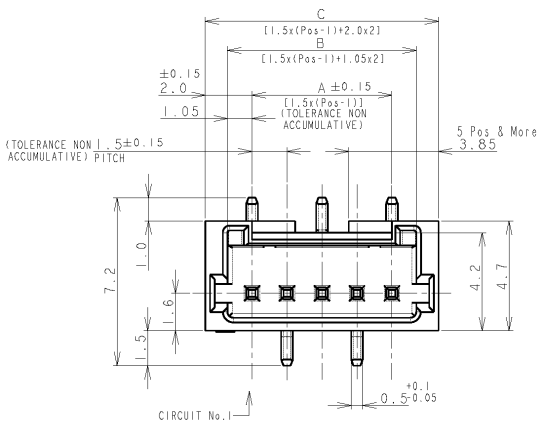
NAME AMP Mini Common Terminated (CT) Connector 1.5mm PITCH
SINGLE ROW POST HDR ASS'Y (V)
SMT TYPE WITH BOSS, EMBOSS TAPE PACKAGED

SIZE	CAGE CODE	DRAWING NO	RESTRICTED TO
A4	00779	C-292230	-

SCALE NON SHEET 2 OF 4 REV B1

THIS DRAWING IS UNPUBLISHED. RELEASED FOR PUBLICATION
 (C) COPYRIGHT BY ALL RIGHTS RESERVED.

LOC	DIST	REVISIONS					
FB	00	P	LTR	DESCRIPTION	DATE	DWN	APVD
				SEE SHEET 1			




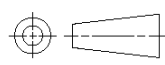
NOTES:
 1. MATERIAL:
 HOUSING: GLASS FILLED, HIGH HEAT RESISTANT NYLON, UL94V-0. COLOR: BEIGE OR BLACK
 POST: 50-100% BRASS WIRE
 TO BE MEASURED WITH CONNECTOR PLACED ON HORIZONTAL DATUM SURFACE.
 FLOAT OF SOLDER TINE FROM DATUM SURFACE IS 0.1mm MAX.

DIMENSIONS:		TOLERANCES UNLESS OTHERWISE SPECIFIED:		DWN	TE TE Connectivity	
mm		0 PLC ±		CHK		
		1 PLC ±		APVD	NAME	
		2 PLC ±		PRODUCT SPEC	AMP MINI COMMON TERMINATION (CT) CONNECTOR 1.5 mm PITCH	
		3 PLC ±		APPLICATION SPEC	SINGLE ROW POST HDR ASS'Y (VI) SMT TYPE WITH BOSS	
		4 PLC ±		WEIGHT	SIZE	RESTRICTED TO
MATERIAL		FINISH		A3 00779 C=292230		
SEE NOTE 1		SEE NOTE 1		CUSTOMER DRAWING		SCALE NON
						SHEET 3 OF 4
						REV B1

LOC	DIST	REVISIONS					
FB	00	P	LTR	DESCRIPTION	DATE	DWN	APVD
		-		SEE SHEET 1	-	-	-

0.98	31.5	32.5	30.6	28.5	20	7-292230-0	2-292230-0
0.93	30.0	31.0	29.1	27.0	19	6-292230-9	1-292230-9
0.89	28.5	29.5	27.6	25.5	18	6-292230-8	1-292230-8
0.84	27.0	28.0	26.1	24.0	17	6-292230-7	1-292230-7
0.80	25.5	26.5	24.6	22.5	16	6-292230-6	1-292230-6
0.75	24.0	25.0	23.1	21.0	15	6-292230-5	1-292230-5
0.71	22.5	23.5	21.6	19.5	14	6-292230-4	1-292230-4
0.66	21.0	22.0	20.1	18.0	13	6-292230-3	1-292230-3
0.62	19.5	20.5	18.6	16.5	12	6-292230-2	1-292230-2
0.57	18.0	19.0	17.1	15.0	11	6-292230-1	1-292230-1
0.52	16.5	17.5	15.6	13.5	10	6-292230-0	1-292230-0
0.48	15.0	16.0	14.1	12.0	9	5-292230-9	292230-9
0.43	13.5	14.5	12.6	10.5	8	5-292230-8	292230-8
0.39	12.0	13.0	11.1	9.0	7	5-292230-7	292230-7
0.34	10.5	11.5	9.6	7.5	6	5-292230-6	292230-6
0.30	9.0	10.0	8.1	6.0	5	5-292230-5	292230-5
0.25	7.5	8.5	6.6	4.5	4	5-292230-4	292230-4
0.20	6.0	7.0	5.1	3.0	3	5-292230-3	292230-3
0.17	4.5	5.5	3.6	1.5	2	-	-
WEIGHT (g)	D	C	B	A	Pos.	BLACK	BEIGE (NAT)
	DIMENSIONS					P/N	

THIS DRAWING IS UNPUBLISHED. ALL RIGHTS RESERVED. © COPYRIGHT BY

DIMENSIONS:		DWN	MATERIAL	FINISH	
mm		CHK	SEE SHEET 1	SEE SHEET 1	
TOLERANCES UNLESS OTHERWISE SPECIFIED:		APVD	 TE Connectivity		
0 PLC	±	PRODUCT SPEC			
1 PLC	±	APPLICATION SPEC	NAME		
2 PLC	±	WEIGHT	AMP MINI COMMON TERMINATED (CT) CONNECTOR 1.5 mm PITCH		
3 PLC	±		SINGLE ROW POST HDR ASS'Y (V) SMT TYPE WITH BOSS		
4 PLC	±		SIZE	CAGE CODE	DRAWING NO
ANGLES	±		A4	00779	C-292230
		CUSTOMER DRAWING		SCALE	SHEET 4 OF 4
				NON	REV B1