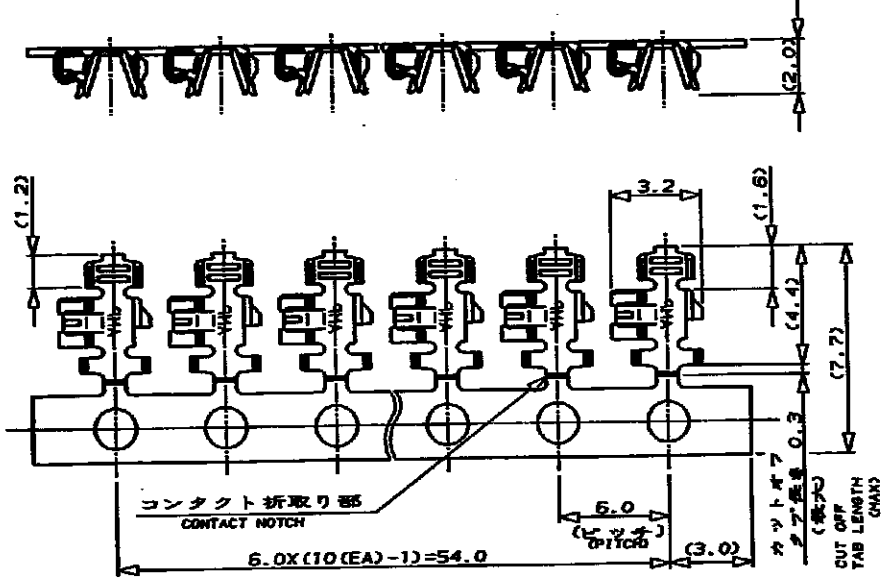


NUMBER C-175161  
 METRIC  
 3rd ANGLE PROJECTION

1-175161-1 : 本図  
 1-175161-1 : AS SHOWN



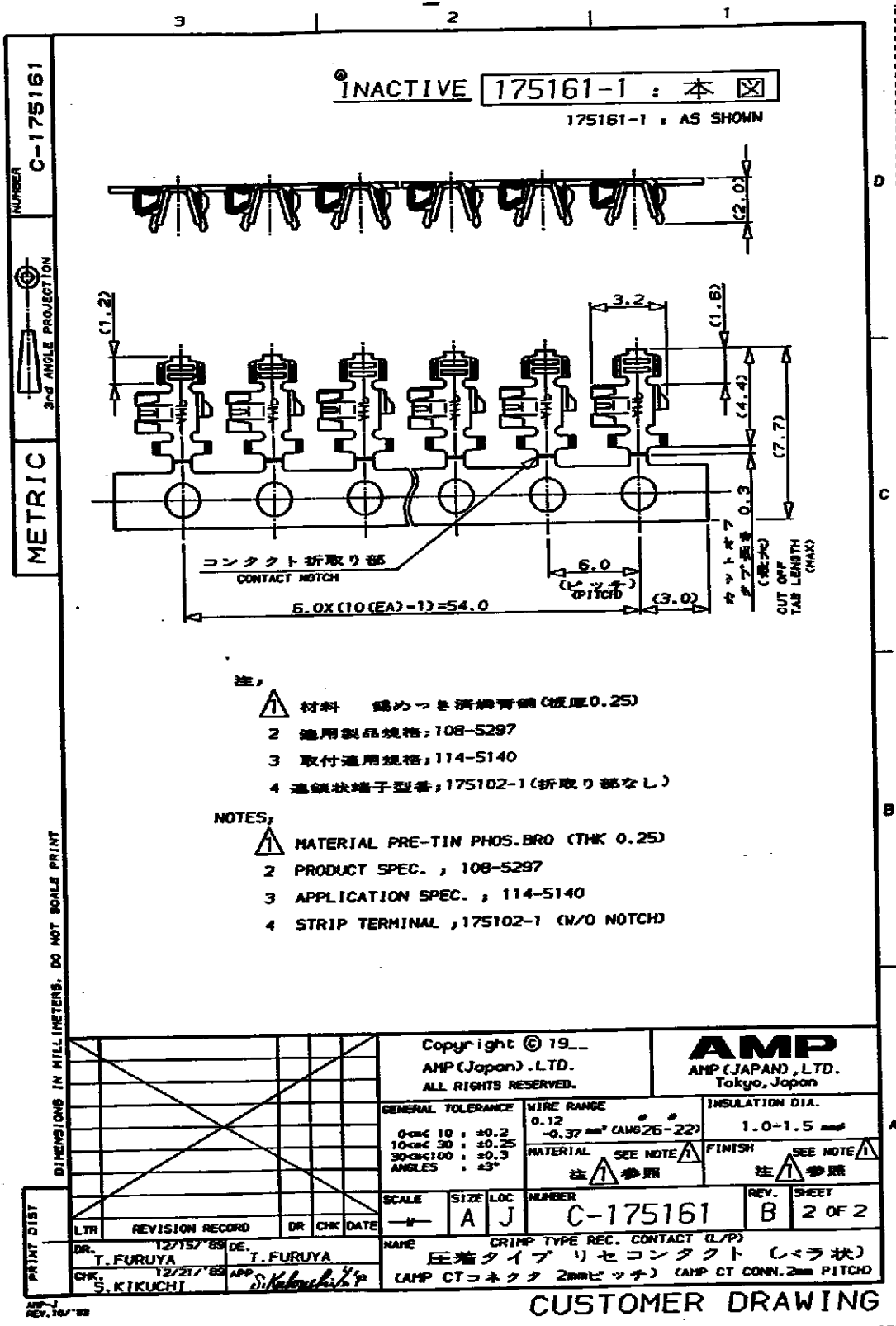
- 注;
- 1 材料 錫めっき済磷青銅 (板厚0.25)
  - 2 適用製品規格, 108-5297
  - 3 取付適用規格, 114-5140
  - 4 温度端子型番, 1-175102-1 (折取り部なし)

- NOTES,
- 1 MATERIAL PRE-TIN PHOS.BRO (THK 0.25)
  - 2 PRODUCT SPEC. , 108-5297
  - 3 APPLICATION SPEC. , 114-5140
  - 4 STRIP TERMINAL , 1-175102-1 (W/O NOTCH)

DIMENSIONS IN MILLIMETERS. DO NOT SCALE PRINT

		Copyright © 19__		<b>AMP</b> AMP (JAPAN) LTD. Tokyo, Japan	
		AMP (Japan) LTD. ALL RIGHTS RESERVED.			
		GENERAL TOLERANCE	WIRE RANGE	INSULATION DIA.	
		0-10mm 10 : ±0.2	0.12	1.0-1.5 mmf	
		10-30mm 30 : ±0.25	-0.37 mm <sup>2</sup> (AWG26-22)	MATERIAL SEE NOTE 1	
		30-100mm 100 : ±0.3	ANGLES : ±3°	FINISH SEE NOTE 2	
		SCALE	SIZE LOC	NUMBER	REV. SHEET
		→	A J	C-175161	B 1 OF 2
DR. T. FURUYA CHK. S. KIKUCHI		DE. T. FURUYA APP. S. Kikuchi		NAME CRIMP TYPE REC. CONTACT (L/P) 圧着タイプリセコンタクト (バラ状) (AMP CTコネクタ 2mmピッチ) (AMP CT CONN. 2mm PITCH)	

CUSTOMER DRAWING



- 注,
- 1 材料 錫めっき析純青銅 (板厚0.25)
  - 2 適用製品規格; 108-5297
  - 3 取付適用規格; 114-5140
  - 4 通線状端子型番; 175102-1 (折取り部なし)

- NOTES,
- 1 MATERIAL PRE-TIN PHOS.BRO (THK 0.25)
  - 2 PRODUCT SPEC. ; 108-5297
  - 3 APPLICATION SPEC. ; 114-5140
  - 4 STRIP TERMINAL ; 175102-1 (W/O NOTCH)

Copyright © 19__ AMP (Japan) .LTD. ALL RIGHTS RESERVED.		<b>AMP</b> AMP (JAPAN) ,LTD. Tokyo, Japan	
		GENERAL TOLERANCE 0<math>mm</math> 10 : $\pm 0.2$ 10<math>mm</math> 30 : $\pm 0.25$ 30<math>mm</math> 100 : $\pm 0.3$ ANGLES : $\pm 3^\circ$	WIRE RANGE 0.12 -0.37 $mm^2$ (AWG26-22)
SCALE $\rightarrow$ SIZE L/C NUMBER A J C-175161		MATERIAL SEE NOTE 1 注 参照	
FINISH SEE NOTE 1 注 参照		REV. SHEET B 2 OF 2	
LTR REVISION RECORD DR CHK DATE DR. T. FURUYA 12/15/88 DE. T. FURUYA CHK. S. KIKUCHI 12/21/88 APP. <i>S. Kikuchi</i>		NAME CRIMP TYPE REC. CONTACT (L/P) 圧着タイプリセコンタクト (レラ状) (AMP CTコネクタ 2mmピッチ) (AMP CT CONN. 2mm PITCH)	

CUSTOMER DRAWING