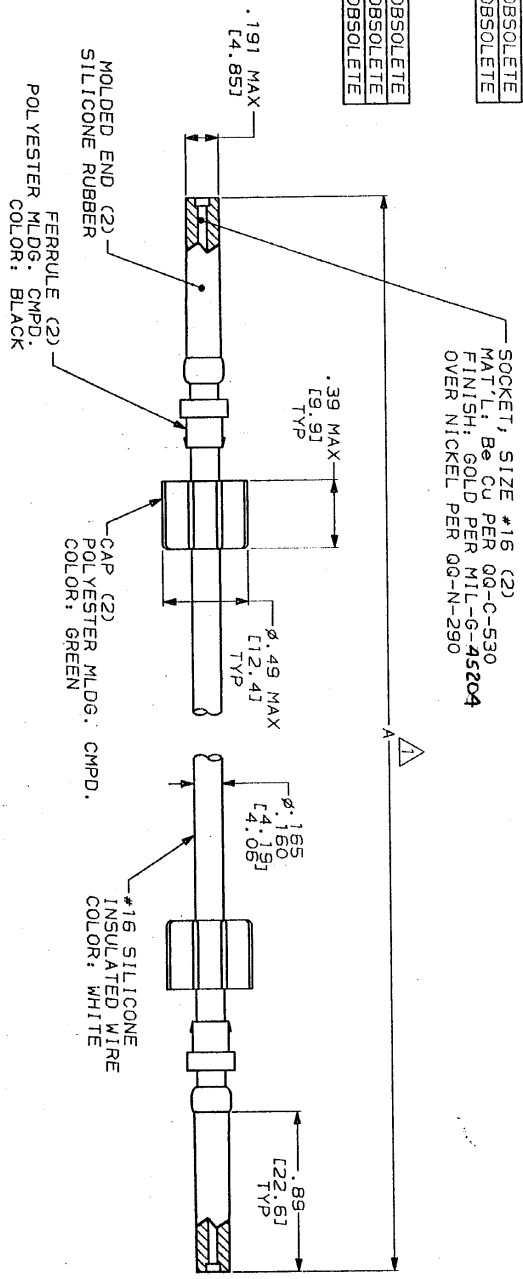


PART NO.	A	△
862548-1	6.00 [152.4]	OBsolete
862548-2	8.00 [203.2]	OBsolete
862548-3	10.00 [254.0]	OBsolete
862548-4	12.00 [304.8]	
862548-5	15.00 [381.0]	
862548-6	18.00 [457.2]	
862548-7	21.00 [533.4]	
862548-9	24.00 [609.6]	
862548-9	18.50 [469.9]	OBsolete
1-862548-0	40.00 [1016.0]	OBsolete
1-862548-1	80.00 [2032.0]	OBsolete
1-862548-2	5.00 [127.0]	OBsolete
1-862548-3	72.00 [1828.8]	OBsolete
1-862548-4	48.00 [1219.2]	OBsolete
1-862548-5	30.00 [762.0]	OBsolete
1-862548-6	36.00 [914.4]	OBsolete
1-862548-7	20.00 [508.0]	OBsolete
1-862548-8	61.00 [1549.4]	OBsolete
1-862548-9	17.00 [431.8]	
2-862548-0	180.00 [4572.0]	
2-862548-1	19.00 [482.6]	OBsolete
2-862548-2	360.00 [9144.0]	OBsolete
2-862548-3	26.00 [660.4]	OBsolete
2-862548-4	96.00 [2438.4]	OBsolete



- △ TOLERANCE OF LEAD LENGTH:  
 UP TO 24 INCHES [609.6] = ±.12 [±3.0]  
 24 INCHES [609.6] & UP = ±1%
- MARKED PER MIL-STD-130.
  - TO MATE WITH AMP LGH-1/2L RECEPTACLE WITH .89 [22.6] BARREL DEPTH.
  - OPERATING VOLTAGE: 15 KVDC AT 0 TO 70,000 FEET, -55°C TO 125°C.

DO NOT SCALE PRINT.  
 UNLESS SPECIFIED IN INCHES (mm)  
 TOLERANCES ON:  
 1 FRACTIONS .005  
 2 DECIMALS .02  
 3 ANGLES .5

DR 3-14-80  
 C.C. THOMAS  
 CHK: P. M. [Signature]  
 APPD: J. M. [Signature]  
 DATE: 8/1/81

AMP AMP INCORPORATED  
 Northborough, Pa. 17106

NAME: LEAD ASS'Y, POS STOP, DBL. END, LGH-1/2L

SIZE: CAGE CODE 00779 DRAWING NO: 862548  
 SCALE: 2:1 SHEET: 1 OF 1

METRIKO

CUSTOMER DRAWING