

4

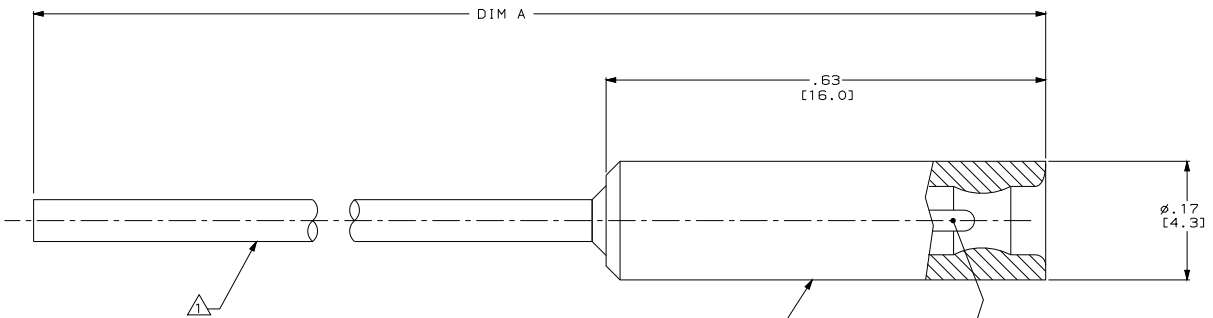
3

2

1

THIS DRAWING IS UNPUBLISHED. RELEASED FOR PUBLICATION .19
 © COPYRIGHT 19 BY AMP INCORPORATED. ALL RIGHTS RESERVED.

LOC	DIST	REVISIONS					
DF	SO	P	LN	DESCRIPTION	DATE	OWN	APP'D
		D		REV PER OH14-0493-04	8-6-04	CT	DE



SIZE 22 PIN CONTACT
 MAT'L: BRONZE PER ASTM-B-140
 FINISH: GOLD OVER NICKEL

- OPERATING VOLTAGE: 6 KVDC
 TEMPERATURE RANGE: -55°C TO +125°C
 ALTITUDE: SEA LEVEL TO 70,000 FEET
 - THIS RECEPTACLE WILL MATE WITH AMP PART NO. 1218147.
- ⚠ 100% TESTING FOR DWV AND PARTIAL DISCHARGE PER RAYTHEON SPEC. 6718649, GROUP A.
- ⚠ 100% TESTING FOR DWV AND PARTIAL DISCHARGE PER RAYTHEON SPEC. 6719581, GROUP A.

⚠	15.00±.12 [381.0±3.0]	#24 GA SILICONE COATED FEP .060 O.D. COLOR: RED	1218148-5
⚠	12.50±.12 [317.5±3.0]	#24 GA SILICONE COATED FEP .060 O.D. COLOR: RED	1218148-4
-	72.00±.72 [1828.8±18.3]	#24 GA SILICONE COATED FEP .060 O.D. COLOR: RED	1218148-3
-	48.00±.48 [1219.2±12.2]	#24 GA SILICONE COATED FEP .060 O.D. COLOR: RED	1218148-2
-	12.50±.12 [317.5±3.0]	#24 GA SILICONE COATED FEP .060 O.D. COLOR: RED	1218148-1
REMARKS	DIM A	WIRE DESCRIPTION ⚠	PART NUMBER

THIS DRAWING IS A CONTROLLED DOCUMENT.

DW	C. C. THOMAS	2-11-98		TYCO Electronics Harrisburg, PA 17105-3608
CHK	D. EARY	2-11-98		
APD	D. EARY	2-11-98	RECEPTACLE, MICRO-MIN, LGH	
DIMENSIONS: INCHES (mm)			SIZE	CAGE CODE
TOLERANCES UNLESS OTHERWISE SPECIFIED: Ø PLG ±.005 Ø PLG ±.01 (0.31) Ø PLG ±.005 (0.13) H. PLG ±.005 ANGLES ±.005			A2	00779
MATERIAL: SEE CALLOUTS			WEIGHT	DRAWING NO.
			CUSTOMER DRAWING	©-1218148
			SCALE	SHEET
			10:1	1 OF 1
			REV	D

1218148

A