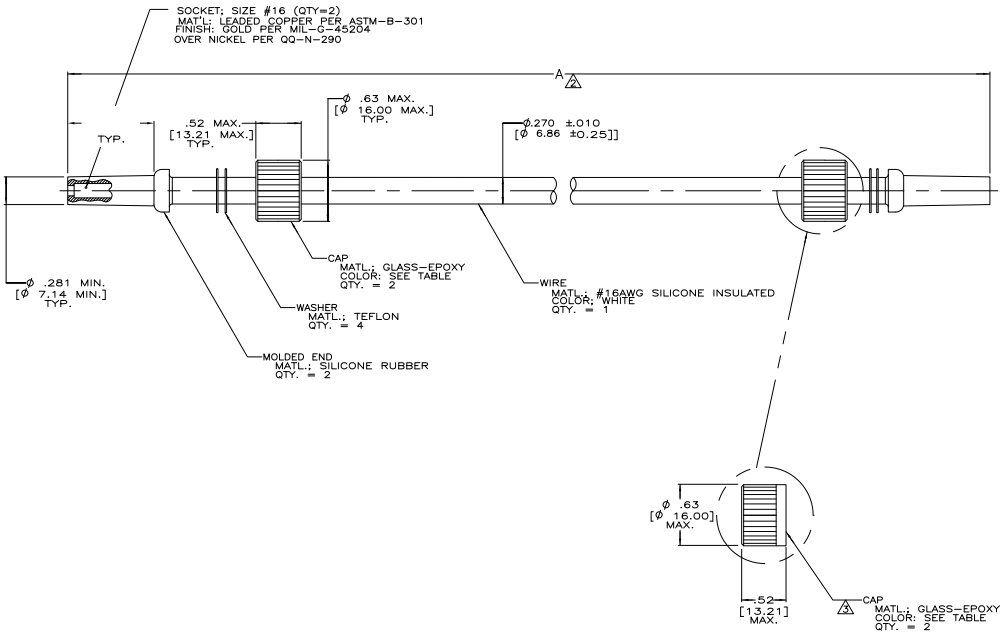


THIS DRAWING IS UNPUBLISHED
 ALL RIGHTS RESERVED

PART NO	A	CAP INFO	
863702-1	8.00 [203.2]	RED	OBSOLETE
863702-2	6.00 [152.4]	RED	OBSOLETE
863702-3	5.00 [127.0]	RED	OBSOLETE
863702-4	9.00 [228.6]	RED	OBSOLETE
863702-5	60.00 [1524.0]	RED	OBSOLETE
863702-6	33.50 [850.9]	RED	OBSOLETE
863702-7	34.50 [876.3]	RED	OBSOLETE
863702-8	35.50 [901.7]	RED	OBSOLETE
863702-9	81.00 [2057.4]	RED	OBSOLETE
1-863702-0	73.00 [1854.2]	RED	OBSOLETE
1-863702-1	89.00 [2260.6]	RED	OBSOLETE
1-863702-2	18.00 [457.2]	RED	OBSOLETE
1-863702-3	12.00 [304.8]	RED	OBSOLETE
1-863702-4	6.25 [158.7]	RED	OBSOLETE
1-863702-5	120.00 [3048.0]	RED	OBSOLETE
1-863702-6	24.00 [609.6]	RED	OBSOLETE
1-863702-7	36.00 [914.4]	RED	OBSOLETE
1-863702-8	42.00 [1066.8]	RED	OBSOLETE
1-863702-9	96.00 [2438.4]	RED	OBSOLETE
2-863702-0	72.00 [1828.8]	RED	OBSOLETE
2-863702-1	48.00 [1219.2]	RED	OBSOLETE
2-863702-2	84.00 [2133.6]	RED	OBSOLETE
2-863702-3	240.00 [6096.0]	RED	OBSOLETE
2-863702-4	30.00 [762.0]	RED	OBSOLETE
2-863702-5	15.00 [381.0]	RED	OBSOLETE
2-863702-6	180.00 [4576.0]	RED	OBSOLETE
2-863702-7	144.00 [3657.6]	RED	OBSOLETE
2-863702-8	21.00 [533.4]	RED	OBSOLETE
2-863702-9	216.00 [5486.4]	RED	OBSOLETE
3-863702-0	160.00 [4064.0]	RED	OBSOLETE
3-863702-1	22.00 [558.8]	RED	OBSOLETE
3-863702-2	31.00 [787.4]	RED	OBSOLETE
3-863702-3	20.00 [508.0]	RED	OBSOLETE
3-863702-4	54.00 [1371.6]	RED	OBSOLETE
3-863702-5	13.00 [330.2]	RED	OBSOLETE
3-863702-6	98.50 [2501.9]	RED	OBSOLETE
3-863702-7	10.00 [254.0]	GREEN	OBSOLETE

REV	DATE	DESCRIPTION	BY	APP
1				
2				
3				
4				
5				
6				
7				
8				
9				
10				
11				
12				
13				
14				
15				
16				
17				
18				
19				
20				
21				
22				
23				
24				
25				
26				
27				
28				
29				
30				
31				
32				
33				
34				
35				
36				
37				
38				
39				
40				
41				
42				
43				
44				
45				
46				
47				
48				
49				
50				
51				
52				
53				
54				
55				
56				
57				
58				
59				
60				
61				
62				
63				
64				
65				
66				
67				
68				
69				
70				
71				
72				
73				
74				
75				
76				
77				
78				
79				
80				
81				
82				
83				
84				
85				
86				
87				
88				
89				
90				
91				
92				
93				
94				
95				
96				
97				
98				
99				
100				



- MARK PER MIL-STD-130
- TOLERANCE: UP TO 24"[609.6] = ±.12"[±3.0], 24"[609.6] & UP = ±1%
- USED WITH LEADS HAVING "A" DIMENSION LESS THAN OR EQUAL TO 10.00[254.0].
- OPERATING CONDITIONS: 20KVDC, SEA LEVEL TO +70,000 FEET, -55° C TO +125° C
- TO MATE WITH AMP LGH-1 RECEPTACLE WITH .88 [22.3] BARREL DEPTH.

THIS DRAWING IS A CONTROLLED DOCUMENT.		E. LEFFERT 10-4-80		TE Connectivity	
INCHES (MM)		D. SCHAEFFER 01-21-81		ELECTRICAL LEAD, DOUBLE MOLDED END, LGH-1 (#16)	
DRAWN BY: SEE CALLOUTS		CHECKED BY: SEE CALLOUTS		REV PER ECD 12-000397	
DATE: 10-4-80		DATE: 01-21-81		REV: 1	
PART NO: 863702		REV: 1		REV: 1	
DRAWING NO: A100779		REV: 1		REV: 1	
CUSTOMER DRAWING		REV: 1		REV: 1	