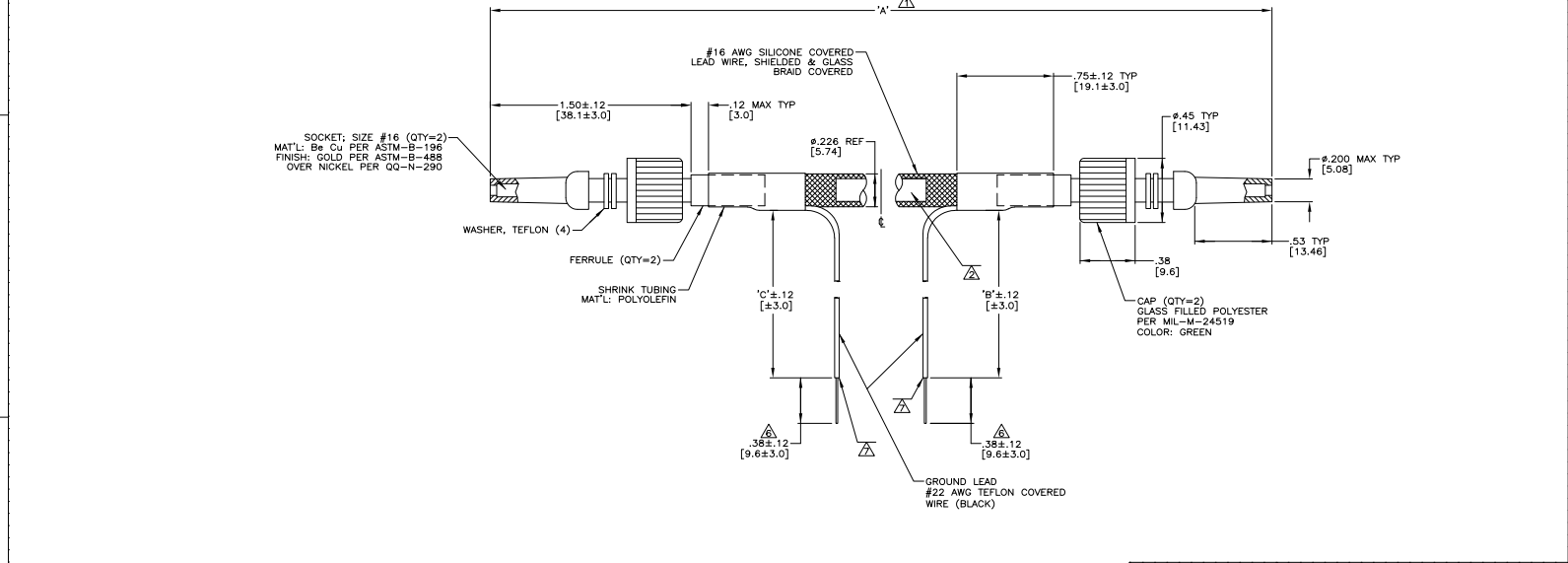


THIS DRAWING IS UNCLASSIFIED
 UNLESS INDICATED OTHERWISE
 ALL RIGHTS RESERVED

PART NO.	'A'	'B'	'C'	REMARKS
858885-1	120.00 [3048.0]	6.00 [152.4]	6.00 [152.4]	
858885-2	10.00 [254.0]	8.00 [203.2]	8.00 [203.2]	
858885-3	12.00 [304.8]	8.00 [203.2]	8.00 [203.2]	OBSOLETE
858885-4	24.00 [609.6]	8.00 [203.2]	8.00 [203.2]	
858885-5	80.00 [2032.0]	20.00 [508.0]	20.00 [508.0]	OBSOLETE
858885-6	48.00 [1219.2]	6.00 [152.4]	6.00 [152.4]	
858885-7	360.00 [9144.0]	6.00 [152.4]	6.00 [152.4]	OBSOLETE
858885-8	80.00 [2032.0]	12.00 [304.8]	12.00 [304.8]	
858885-9	72.00 [1828.8]	12.00 [304.8]		OBSOLETE
1-858885-0	60.00 [1524.0]	12.00 [304.8]	12.00 [304.8]	OBSOLETE
1-858885-1	144.00 [3657.6]	12.00 [304.8]	12.00 [304.8]	
1-858885-2	108.00 [2743.2]	12.00 [304.8]	12.00 [304.8]	OBSOLETE
1-858885-3	103.00 [2616.2]	8.00 [152.4]	8.00 [152.4]	OBSOLETE
1-858885-4	571.00 [14503.4]	6.00 [152.4]	6.00 [152.4]	OBSOLETE
1-858885-5	158.00 [4013.2]	6.00 [152.4]	6.00 [152.4]	OBSOLETE
1-858885-6	132.00 [3352.8]	6.00 [152.4]	6.00 [152.4]	
1-858885-7	914.00 [23055.6]	6.00 [152.4]	6.00 [152.4]	OBSOLETE
1-858885-8	501.00 [12725.4]	6.00 [152.4]	6.00 [152.4]	OBSOLETE
1-858885-9	162.00 [4114.8]	6.00 [152.4]	6.00 [152.4]	OBSOLETE
2-858885-0	187.00 [4749.8]	6.00 [152.4]	6.00 [152.4]	
2-858885-1	30.00 [762.0]	6.00 [152.4]	6.00 [152.4]	OBSOLETE
2-858885-2	139.00 [3530.6]	6.00 [152.4]	6.00 [152.4]	OBSOLETE
2-858885-3	155.00 [3937.0]	6.00 [152.4]	6.00 [152.4]	OBSOLETE
2-858885-4	180.00 [4572.0]	6.00 [152.4]	6.00 [152.4]	
2-858885-5	36.00 [914.4]	6.00 [152.4]	6.00 [152.4]	OBSOLETE
2-858885-6	240.00 [6096.0]	6.00 [152.4]	6.00 [152.4]	
2-858885-7	18.00 [457.2]	6.00 [152.4]	6.00 [152.4]	
2-858885-8	100.00 [2540.0]	6.00 [152.4]	6.00 [152.4]	
2-858885-9	200.00 [5080.0]	6.00 [152.4]	6.00 [152.4]	OBSOLETE
7-858885-1	30.00 [762.0]	6.00 [152.4]	6.00 [152.4]	
7-858885-5	36.00 [914.4]	6.00 [152.4]	6.00 [152.4]	

REV	DATE	DESCRIPTION	BY	APP
1	06-26	AF	AF	DE

- △ TOLERANCE OF LEAD LENGTH:
UP TO 24 INCHES [609.6] = ±.12 [±3.1]
24 INCHES [609.6] & UP = 1%
- △ MARKED PER MIL-STD-130 WITH BLACK INK.
- 3. LEAD COLOR IS WHITE UNLESS OTHERWISE SPECIFIED.
- 4. LEAD WILL MATE WITH AMP 1/2 RECEPTACLE WITH .53 [13.5] BARREL DEPTH.
- 5. OPERATING VOLTAGE: 10 KVDC AT 0 TO 70,000 FEET, -55°C TO 125°C.
- △ WHERE APPLICABLE PIGTAIL IS SOLDER DIPPED.
- △ INSULATION CUT TO LENGTH, BUT NOT REMOVED.



THIS DRAWING IS A CONTROLLED DOCUMENT		DATE: 07-06-81	REV: 01	REVISED BY: [Signature]	REVISED DATE: 07-06-81
DRAWN BY: [Signature]		DESIGNED BY: [Signature]	CHECKED BY: [Signature]	APPROVED BY: [Signature]	DATE: 07-06-81
SEE CALLOUTS		CUSTOMER DRAWING		SIZE: A1	DATE: 07-06-81
PART NO.: 858885		DESCRIPTION: LEAD ASSEMBLY, DBL END		REVISED TO: [Signature]	DATE: 07-06-81
REV: 01		REVISED BY: [Signature]		REVISED DATE: 07-06-81	DATE: 07-06-81