

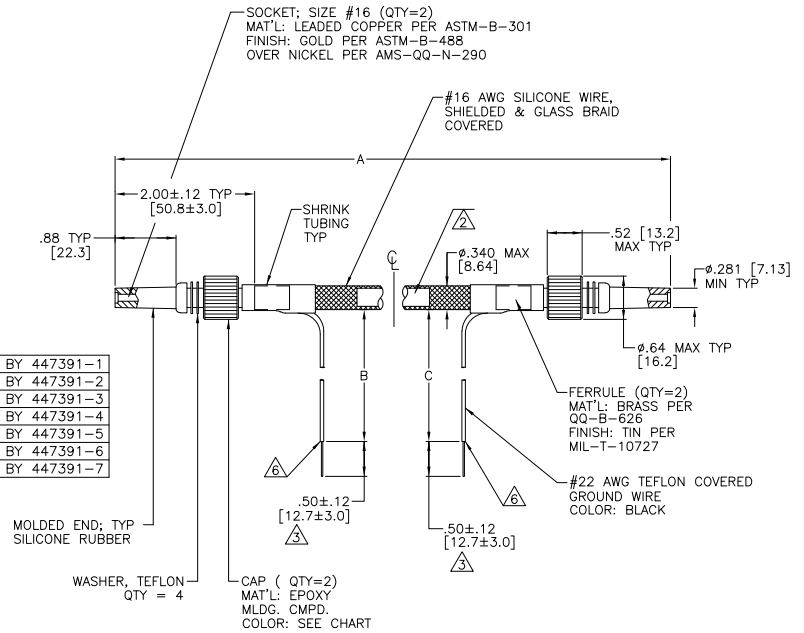
4

3

2

1

THIS DRAWING IS UNPUBLISHED.		RELEASED FOR PUBLICATION		- N/A -	
COPYRIGHT	N/A	BY TYCO ELECTRONICS CORPORATION. ALL RIGHTS RESERVED.			
PART NO.	A	B	C	CAP COLOR	REMARKS
849104-1	24.00 [609.6]	6.00 [152.4]	-	RED	△ OBSOLETE
849104-2	96.00 [2438.4]	6.00 [152.4]	-	RED	△
849104-3	48.00 [1219.2]	6.00 [152.4]	-	RED	△
849104-4	15.00 [381.0]	6.00 [152.4]	-	RED	△ OBSOLETE
849104-5	8.00 [203.2]	6.00 [152.4]	-	RED	△
849104-6	120.00 [3048.0]	6.00 [152.4]	-	RED	△
849104-7	240.00 [6096.0]	6.00 [152.4]	-	RED	△ OBSOLETE
849104-8	10.00 [254.0]	6.00 [152.4]	-	RED	△
849104-9	72.00 [1828.8]	6.00 [152.4]	6.00 [152.4]	RED	△ OBSOLETE
1-849104-0	80.00 [2032.0]	20.00 [508.0]	20.00 [508.0]	RED	△ OBSOLETE
1-849104-1	26.00 [660.4]	6.00 [152.4]	6.00 [152.4]	RED	△ OBSOLETE
1-849104-2	14.00 [355.6]	6.00 [152.4]	6.00 [152.4]	RED	△ OBSOLETE
1-849104-3	144.00 [3657.6]	6.00 [152.4]	6.00 [152.4]	RED	△ OBSOLETE
1-849104-4	216.00 [5486.4]	6.00 [152.4]	6.00 [152.4]	RED	△ OBSOLETE
1-849104-5	18.00 [457.2]	6.00 [152.4]	-	RED	△
1-849104-6	24.00 [609.6]	6.00 [152.4]	6.00 [152.4]	RED	△ OBSOLETE
1-849104-7	36.00 [914.4]	6.00 [152.4]	-	RED	△
1-849104-8	300.00 [7620.0]	6.00 [152.4]	-	RED	△ OBSOLETE
1-849104-9	36.00 [914.4]	6.00 [152.4]	6.00 [152.4]	RED	△
2-849104-0	180.00 [4572.0]	6.00 [152.4]	6.00 [152.4]	RED	△ OBSOLETE
2-849104-1	39.00 [990.6]	6.00 [152.4]	6.00 [152.4]	RED	△ OBSOLETE
2-849104-2	840.00 [21336.0]	6.00 [152.4]	6.00 [152.4]	RED	△ OBSOLETE
2-849104-3	600.00 [15240.0]	6.00 [152.4]	6.00 [152.4]	RED	△ OBSOLETE
2-849104-4	60.00 [1524.0]	6.00 [152.4]	6.00 [152.4]	RED	△ OBSOLETE
2-849104-5	19.00 [482.6]	6.00 [152.4]	-	GREEN	△ SUPERSEDED BY 447391-1
2-849104-6	27.00 [685.8]	6.00 [152.4]	-	GREEN	△ SUPERSEDED BY 447391-2
2-849104-7	35.00 [889.0]	6.00 [152.4]	-	GREEN	△ SUPERSEDED BY 447391-3
2-849104-8	42.00 [1066.8]	6.00 [152.4]	-	GREEN	△ SUPERSEDED BY 447391-4
2-849104-9	51.00 [1295.4]	6.00 [152.4]	-	GREEN	△ SUPERSEDED BY 447391-5
3-849104-0	59.00 [1498.6]	6.00 [152.4]	-	GREEN	△ SUPERSEDED BY 447391-6
3-849104-1	67.00 [1701.8]	6.00 [152.4]	-	GREEN	△ SUPERSEDED BY 447391-7
5-849104-3	48.00 [1219.2]	6.00 [152.4]	-	RED	△
6-849104-7	36.00 [914.4]	6.00 [152.4]	-	RED	△



△ TOLERANCE OF LEAD LENGTH:
UP TO 24 INCHES [609.6] = ±.12 [±3.0]
24 INCHES [609.6] & UP = ±1%

△ MARKED PER MIL-STD-130.

△ PIGTAILS ARE SOLDER DIPPED.

4. TO MATE WITH AMP LGH-1 RECEPTACLE WITH .88 [22.3] BARREL DEPTH.

5. OPERATING VOLTAGE: 20 KVDC AT 0 TO 70,000 FEET, -55°C TO 125°C.

△ INSULATION CUT, BUT NOT REMOVED.

THIS DRAWING IS A CONTROLLED DOCUMENT.		DR: C.C. THOMAS 15-JUN-90	Tyco Electronics Corporation Harrisburg, Pa 17105-3608	
DIMENSIONS: INCHES (DW)		OK: D. OPLINGER 16-JUL-90	Tyco Electronics	
MATERIAL: SEE CALLOUTS		APP: D. OPLINGER 16-JUL-90	NAME: DBL END, SHIELDED & GLASS BRAID JACKET LGH-1	
FINISH: SEE CALLOUTS		APPLICATION SPEC: -	RESTRICTED TO: -	
CUSTOMER DRAWING		SIZE: A2	DATE CODE: 00779	DRAWING NO: C-849104
		SCALE: 1:1	SHEET: 1 OF 1	REV: W

AMP 1471-9 REV 31MM2000