

4

3

2

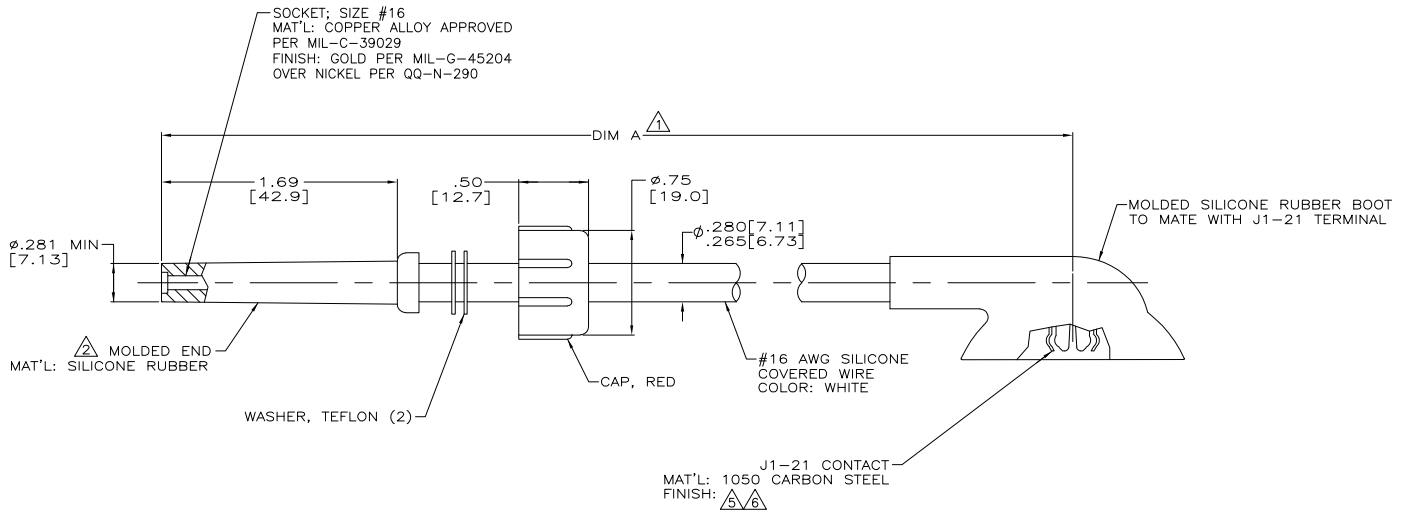
1

THIS DRAWING IS UNPUBLISHED. RELEASED FOR PUBLICATION - N/A  
 © COPYRIGHT N/A BY TYCO ELECTRONICS CORPORATION. ALL RIGHTS RESERVED.

LOC	DIST	REVISIONS					
DF	SO	P	LR	DESCRIPTION	DATE	MIN	APD
		H		REV PER OH14-0191-05	05-05	AA	DE

PART NO.	A DIM $\Delta$	FINISH
846977-1	24.25 [615.9]	$\Delta$
846977-2	30.00 [762.0]	$\Delta$ OBSOLETE
846977-3	60.00 [1524.0]	$\Delta$ OBSOLETE
846977-4	8.00 [203.2]	$\Delta$
846977-5	15.00 [381.0]	$\Delta$
846977-6	10.00 [254.0]	$\Delta$ OBSOLETE
846977-7	10.00 [254.0]	$\Delta$ OBSOLETE
846977-8	12.00 [304.8]	$\Delta$
846977-9	41.00 [1041.4]	$\Delta$ OBSOLETE
1-846977-0	16.00 [406.4]	$\Delta$ OBSOLETE
1-846977-1	18.00 [457.2]	$\Delta$
1-846977-2	20.00 [508.0]	$\Delta$ OBSOLETE
1-846977-3	36.00 [914.4]	$\Delta$
5-846977-1	24.25 [615.9]	$\Delta$
5-846977-4	8.00 [203.2]	$\Delta$
5-846977-5	15.00 [381.0]	$\Delta$

- $\Delta$  TOLERANCE: UP TO 24.00 [609.6] =  $\pm 0.12$  [ $\pm 3.0$ ]  
 24.00 [609.6] & UP =  $\pm 1\%$
- $\Delta$  TO MATE WITH AMP LGH-1L RECEPTACLES  
 WITH 1.69 [42.9] BARREL DEPTH.
3. MARKED PER MIL-STD-130
- $\Delta$  SPECIAL PACKAGING FOR -1 ONLY. ONE LEAD PER BAG.
- $\Delta$  PLATED 93/7 TIN-LEAD OR TIN PER ASTM-B-545 OVER  
 NICKEL PER AMS-QQ-N-290.
- $\Delta$  PLATED TIN PER ASTM-B-545 OVER NICKEL PER AMS-QQ-N-290.



DIMENSIONS:		TOLERANCES UNLESS OTHERWISE SPECIFIED:		THIS DRAWING IS A CONTROLLED DOCUMENT.		DATE: 24-APR-97		Tyco Electronics Corporation	
INCHES		Ø	PLC	Ø	C. THOMAS	Ø	S. GLATFELTER	Tyco Electronics Corporation	
		Ø	PLC	Ø	S. GLATFELTER	Ø	S. GLATFELTER	Harrisburg, Pa 17105-3608	
		Ø	PLC	Ø	S. GLATFELTER	Ø	S. GLATFELTER	LEAD ASSY	
		Ø	PLC	Ø	S. GLATFELTER	Ø	S. GLATFELTER	WITH J1-21 CONTACT	
		Ø	PLC	Ø	S. GLATFELTER	Ø	S. GLATFELTER	LGH-1L	
		Ø	PLC	Ø	S. GLATFELTER	Ø	S. GLATFELTER	RESTRICTED TO	
		Ø	PLC	Ø	S. GLATFELTER	Ø	S. GLATFELTER	A2 00779 C-846977	
		Ø	PLC	Ø	S. GLATFELTER	Ø	S. GLATFELTER	SCALE: 2:1 SHEET 1 OF 1 REV H	
		Ø	PLC	Ø	S. GLATFELTER	Ø	S. GLATFELTER	CUSTOMER DRAWING	

AMP 1471-9 REV 31MM2000

846977

A