

4

3

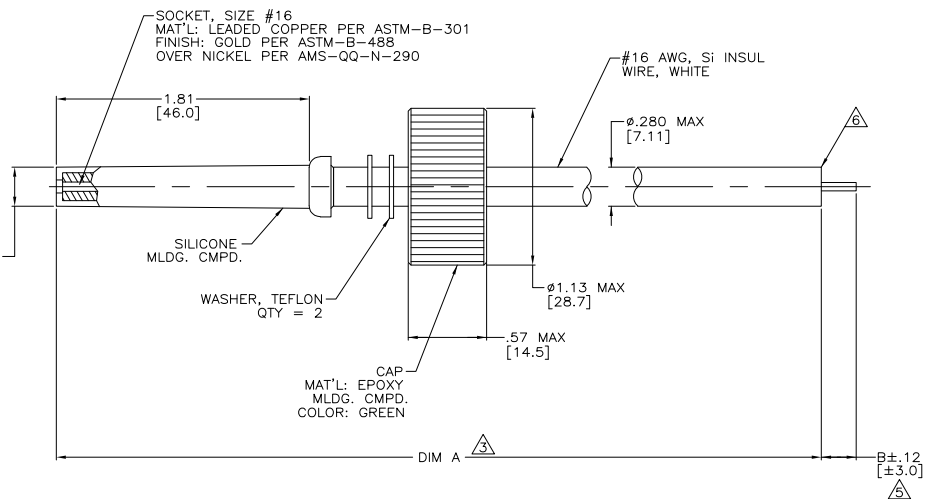
2

1

THIS DRAWING IS UNPUBLISHED.		RELEASED FOR PUBLICATION		- N/A -	
COPYRIGHT	N/A	BY TYCO ELECTRONICS CORPORATION.		ALL RIGHTS RESERVED.	
PART NO.	DIM A	DIM B	REMARKS		
837975-1	12.00 [304.8]	--			
837975-2	36.00 [914.4]	--			
837975-3	18.00 [457.2]	--			
837975-4	8.00 [203.2]	.25 [6.3]			OBSOLETE
837975-5	120.00 [3048.0]	.25 [6.3]			OBSOLETE
837975-6	6.00 [152.4]	.25 [6.3]			
837975-7	30.00 [762.0]	.38 [9.7]			
837975-8	12.00 [304.8]	.38 [9.7]			
837975-9	48.00 [1219.2]	.38 [9.7]			
1-837975-0	15.75 [400.0]	--			OBSOLETE
1-837975-1	10.00 [254.0]	.38 [9.7]			OBSOLETE
1-837975-2	5.00 [127.0]	.38 [9.7]			OBSOLETE
1-837975-3	7.00 [177.8]	.38 [9.7]			OBSOLETE
1-837975-4	9.00 [228.6]	.38 [9.7]			
1-837975-5	16.00 [406.4]	.38 [9.7]			
1-837975-6	24.00 [609.6]	.38 [9.7]			
1-837975-7	60.00 [1524.0]	.38 [9.7]			OBSOLETE
1-837975-8	72.00 [1828.8]	.38 [9.7]			
1-837975-9	420.00 [10668.0]	.38 [9.7]			OBSOLETE
2-837975-0	240.00 [6096.0]	.38 [9.7]			OBSOLETE
2-837975-1	158.00 [4013.2]	.38 [9.7]			
2-837975-2	197.00 [5003.8]	.38 [9.7]			OBSOLETE
2-837975-3	276.00 [7010.4]	.38 [9.7]			OBSOLETE
2-837975-4	1182.00 [30022.8]	.38 [9.7]			OBSOLETE
2-837975-5	480.00 [12192.0]	.38 [9.7]			
2-837975-6	17.00 [431.8]	.38 [9.7]			OBSOLETE
2-837975-7	360.00 [9144.0]	.38 [9.7]			OBSOLETE
2-837975-8	78.75 [2000.2]	.38 [9.7]			OBSOLETE
2-837975-9	40.00 [1016.0]	.38 [9.7]			OBSOLETE
5-837975-9	48.00 [1219.2]	.38 [9.7]			
6-837975-4	9.00 [228.6]	.38 [9.7]			
6-837975-6	24.00 [609.6]	.38 [9.7]			

LOC	DIST	REVISIONS					
DF	SO	P	LR	DESCRIPTION	DATE	MIN	APD
		R		REV PER ECO-05-002357	08-05	AA	DE

1. MARKED PER MIL-STD-130.
 2. LEADS WILL MATE WITH AMP LGH-3 RECEPTACLE WITH 1.81 [4.7] BARREL DEPTH.
- △ TOLERANCE OF LEAD LENGTH:
UP TO 24 INCHES [609.6] = ±.12 [±3.0]
24 INCHES [609.6] & UP = ±1%
4. OPERATING VOLTAGE: 40 KVDC AT 0 TO 70,000 FEET, -55°C TO 125°C.
- △ PIGTAIL IS SOLDER DIPPED.
△ INSULATION CUT, BUT NOT REMOVED.



THIS DRAWING IS A CONTROLLED DOCUMENT.		DR: C.C. THOMAS 02-MAY-94	Tyco Electronics Corporation	
DIMENSIONS: INCHES (mm)		CR: D. EARY 04-MAY-94	Harrisburg, Pa 17105-3608	
OTHER DIMENSIONS: OTHER UNITS: SEE CALLOUTS		APP: D. EARY 04-MAY-94	NAME: LEAD ASSY	
0 PLC # -		PRODUCT SPEC: -	SGL END	
1 PLC # -		APPLICATION SPEC: -	LGH-3	
2 PLC # 20 [5.1]		SIZE: A2	CHG CODE: 00779	DRAWING NO: C-837975
3 PLC # -		WEIGHT: -	RESTRICTED TO: -	
4 PLC # -		CUSTOMER DRAWING		
MATERIAL: SEE CALLOUTS		SCALE: 2:1 SHEET 1 OF 1 REV R		
FINISH: SEE CALLOUTS				

AMP 1471-9 REV 31MM2000

837975

A