

4

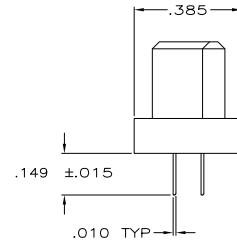
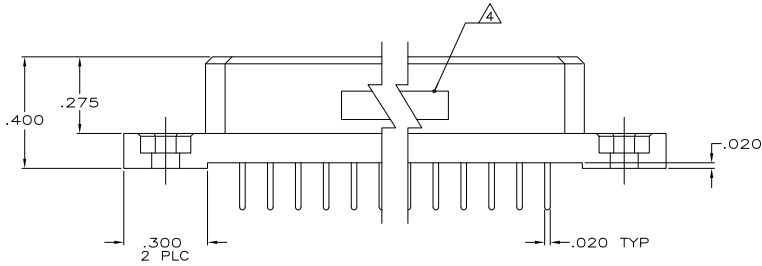
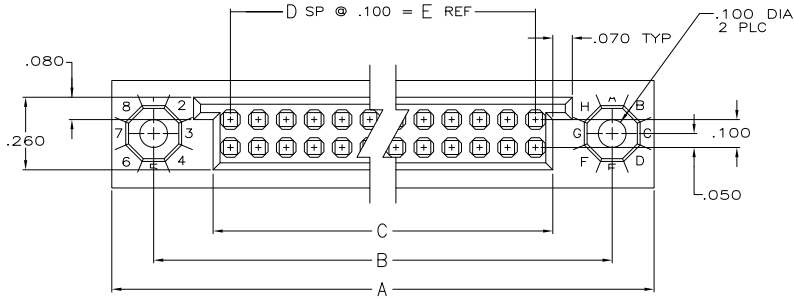
3

2

1

THIS DRAWING IS UNPUBLISHED. RELEASED FOR PUBLICATION
 © COPYRIGHT - By - ALL RIGHTS RESERVED.

LOC	DIST	REVISIONS					
DF	FO	P	LTR	DESCRIPTION	DATE	MIN	APD
		K		REV PER ECO-11-020836	09NOV11	PY	DM



THIS DRAWING IS A CONTROLLED DOCUMENT.		DR: D. EVANS 7/30/05	
		CHK: D. RUBENDALL 10/22/05	
DIMENSIONS: INCHES		APPROVED: [Signature]	NAME
OTHER DIMENSIONS: OTHER UNITS: DECIMALS		PRODUCT SPEC	BOX II ASSY, 2 ROW, WITH .149 SOLDER TAILS
0 PLC ± .005 1 PLC ± .005 2 PLC ± .01 3 PLC ± .005 4 PLC ± .005 ANGLES ± .5°		APPLICATION SPEC	SIZE: A2 CAGE CODE: 00779 ©=533289
MATERIAL: - FINISH: -		WEIGHT	RESTRICTED TO: -
		CUSTOMER DRAWING	SCALE: 4:1 SHEET: 1 of 2 REV: K

1471-9 (3/11)

533289

A

4

3

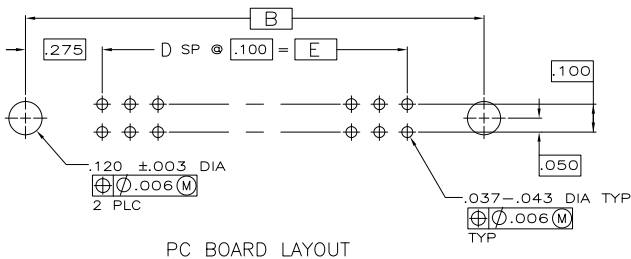
2

1

THIS DRAWING IS UNPUBLISHED. RELEASED FOR PUBLICATION
 © COPYRIGHT - By - ALL RIGHTS RESERVED.

LOC	DIST	REVISIONS					
DF	FO	P	LTR	DESCRIPTION	DATE	BY	APPD
-	-	-	-	SEE SHEET 1	-	-	-

- ⚠ HOUSING MATERIAL: THERMOPLASTIC; COLOR: NATURAL (BROWN).
- ⚠ CONTACT MATERIAL: COPPER ALLOY.
- ⚠ CONTACT FINISH: .000050-.000100 NICKEL UNDERPLATE ALL OVER. .000030 GOLD IN CONTACT AREA. TIN-PLATED SOLDER TAILS.
- ⚠ TE, PART NO & DATE CODE MARKED IN THIS APPROXIMATE AREA.
- ⚠ THIS ASSEMBLY USES LEAD FREE CONTACTS AND IS ROHS COMPLIANT.



	2.900	29	3.024	3.450	3.750	60	533289-5
	8.500	85	8.624	9.050	9.350	172	2-533289-0
	9.900	99	10.024	10.450	10.750	200	1-533289-9
OBSOLETE	9.400	94	9.524	9.950	10.250	190	1-533289-8
OBSOLETE	8.900	89	9.024	9.450	9.750	180	1-533289-7
OBSOLETE	8.400	84	8.524	8.950	9.250	170	1-533289-6
OBSOLETE	7.900	79	8.024	8.450	8.750	160	1-533289-5
OBSOLETE	7.400	74	7.524	7.950	8.250	150	1-533289-4
OBSOLETE	6.900	69	7.024	7.450	7.750	140	1-533289-3
OBSOLETE	6.400	64	6.524	6.950	7.250	130	1-533289-2
OBSOLETE	5.900	59	6.024	6.450	6.750	120	1-533289-1
OBSOLETE	5.400	54	5.524	5.950	6.250	110	1-533289-0
OBSOLETE	4.900	49	5.024	5.450	5.750	100	533289-9
OBSOLETE	4.400	44	4.524	4.950	5.250	90	533289-8
OBSOLETE	3.900	39	4.024	4.450	4.750	80	533289-7
OBSOLETE	3.400	34	3.524	3.950	4.250	70	533289-6
	2.900	29	3.024	3.450	3.750	60	533289-5
OBSOLETE	2.400	24	2.524	2.950	3.250	50	533289-4
OBSOLETE	1.900	19	2.024	2.450	2.750	40	533289-3
OBSOLETE	1.400	14	1.524	1.950	2.250	30	533289-2
	.900	9	1.024	1.450	1.750	20	533289-1
	E	D	C	B	A	POSN	PART NUMBER

THIS DRAWING IS A CONTROLLED DOCUMENT.

DESIGNED BY: D. EVANS	DATE: 09/04/05	TE Connectivity
CHECKED BY: D. RUBENDALL	DATE: 10/29/05	
APPROVED BY: D. RUBENDALL	DATE: 10/29/05	BOX II ASSY, 2 ROW, WITH .149 SOLDER TAILS
PRODUCT SPEC: -	APPLICATION SPEC: -	RESTRICTED TO: -
MATERIAL: -	WEIGHT: -	SIZE: A2
FINISH: -	CUSTOMER DRAWING	CASE CODE: 00779 DRAWING NO: C-533289
SCALE: -		SHEET: 2 of 2
REV: K		

1471-9 (3/11)

533289

B

A