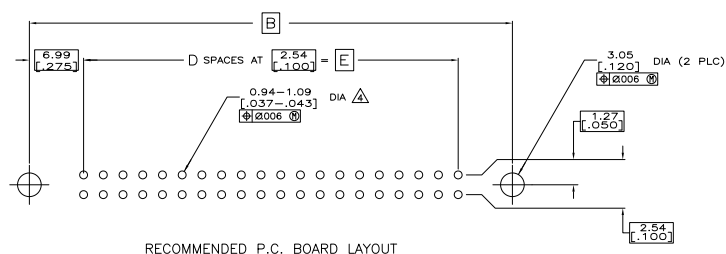
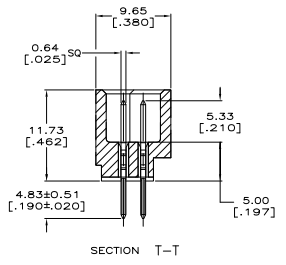
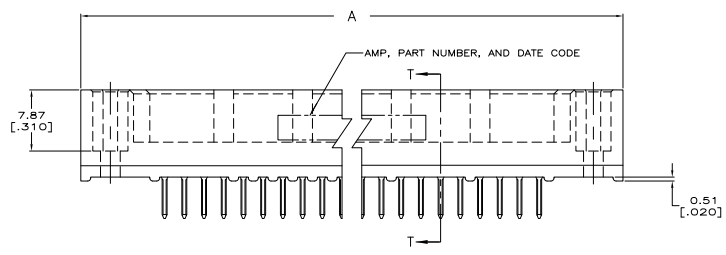
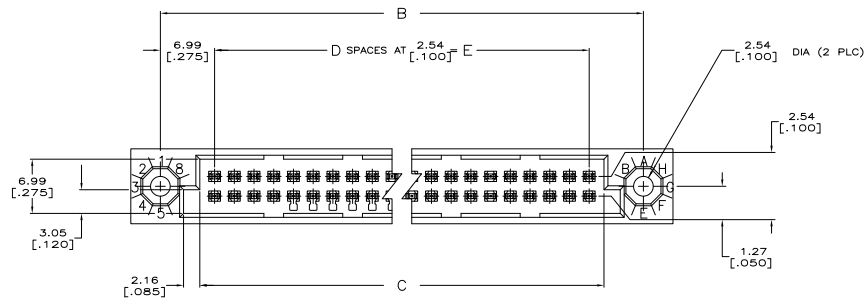


THIS DRAWING IS UNPUBLISHED. ALL RIGHTS RESERVED.
 © 2008 BY TYS ELECTRONICS CORPORATION. ALL RIGHTS RESERVED.

REV	DATE	DESCRIPTION	BY	APP
N1	REV PER ECO-07-00206		DIMAS2007	BC AS
N2	REVISED PER ECO-09-021826		OBANNO	KK AEG



THIS DRAWING IS A CONTROLLED DOCUMENT.		DESIGNED BY	DATE	REVISED BY	DATE
DRAWING NO. 00000000		KIEBLER	6/17/08		
DRAWING TITLE		HDI, 2 ROW, PIN ASSEMBLY, 4.83 [190] LONG SOLDER PINS, 00076 [000030] GOLD PLATE			
DRAWING SCALE		A1 00779 632430			
DRAWING SHEET		1 OF 2			
DRAWING DATE		4/1			
DRAWING BY		N2			

AMP 480 REV 2/2008

THIS DRAWING IS UNPUBLISHED. REVISIONS FOR PURCHASER. ALL RIGHTS RESERVED.

REV	DATE	DESCRIPTION	BY	CHK	APP
00		SEE SHEET 1			

- △ HOUSING MATERIAL: THERMOPLASTIC, COLOR-NATURAL.
- △ CONTACT MATERIAL: PHOSPHOR BRONZE.
- △ CONTACT FINISH: .00127-.00254 [.000050-.000100] NICKEL UNDERPLATE ALL OVER; .00076 [.000030] GOLD PLATE IN CONTACT AREA, TIN-LEAD PLATED POSTS.
- △ SOLDER PIN POST RECOMMENDED P.C. BOARD HOLE SIZES ARE 0.94-1.09 [.037-.043]; RECOMMENDED PAD DIA IS 1.52 [.060].
- 5. DIMENSIONS IN BRACKETS ARE IN INCHES.
- △ PART NUMBER IS OBSOLETE.
- △ OBSOLETE PARTS: OBSOLETE CIS STREAMLINING PER D.RENAUD/D.SINISI

△ 251.46 [9.900]	-99	255.27 [10.050]	265.43 [10.450]	273.05 [10.750]	-200	1-532430-9
△ 238.76 [9.400]	-94	242.57 [9.550]	252.75 [9.950]	260.35 [10.250]	+90	1-532430-8
△ 226.06 [8.900]	-89	229.87 [9.050]	240.03 [9.450]	247.65 [9.750]	+80	1-532430-7
△ 213.36 [8.400]	-84	217.17 [8.550]	227.33 [8.950]	234.95 [9.250]	+70	1-532430-6
△ 200.66 [7.900]	-79	204.47 [8.050]	214.63 [8.450]	222.25 [8.750]	+60	1-532430-5
187.96 [7.400]	74	191.77 [7.550]	201.93 [7.950]	209.55 [8.250]	150	1-532430-4
△ 175.26 [6.900]	69	179.07 [7.050]	189.23 [7.450]	196.85 [7.750]	140	1-532430-3
△ 162.56 [6.400]	-64	166.37 [6.550]	176.53 [6.950]	184.15 [7.250]	+30	1-532430-2
△ 149.86 [5.900]	-59	153.67 [6.050]	163.83 [6.450]	171.45 [6.750]	+20	1-532430-1
137.16 [5.400]	54	140.97 [5.550]	151.13 [5.950]	158.75 [6.250]	110	1-532430-0
△ 124.46 [4.900]	49	128.27 [5.050]	138.43 [5.450]	146.05 [5.750]	100	532430-9
△ 111.76 [4.400]	-44	115.57 [4.550]	125.73 [4.950]	133.35 [5.250]	-90	532430-8
△ 99.06 [3.900]	39	102.87 [4.050]	113.03 [4.450]	120.65 [4.750]	80	532430-7
△ 86.36 [3.400]	-34	90.17 [3.550]	100.33 [3.950]	107.95 [4.250]	-70	532430-6
△ 73.66 [2.900]	29	77.47 [3.050]	87.63 [3.450]	95.25 [3.750]	60	532430-5
△ 60.96 [2.400]	-24	64.77 [2.550]	74.93 [2.950]	82.55 [3.250]	-50	532430-4
△ 48.26 [1.900]	19	52.07 [2.050]	62.23 [2.450]	69.85 [2.750]	40	532430-3
△ 35.56 [1.400]	14	39.37 [1.550]	49.53 [1.950]	57.15 [2.250]	30	532430-2
△ 22.86 [0.900]	-9	26.67 [1.050]	36.83 [1.450]	44.45 [1.750]	-20	532430-1

△ OBSOLETE

THIS DRAWING IS A CONTROLLED DOCUMENT. IT IS THE PROPERTY OF KIEBER ELECTRONICS. IT IS TO BE KEPT IN CONFIDENCE AND NOT TO BE REPRODUCED OR TRANSMITTED IN ANY FORM OR BY ANY MEANS, ELECTRONIC OR MECHANICAL, INCLUDING PHOTOCOPYING, RECORDING, OR BY ANY INFORMATION STORAGE AND RETRIEVAL SYSTEM.		KIEBER ELECTRONICS Harrisburg, PA 17105-3608	
DESIGNER: [Signature]	DATE: [Date]	PROJECT: [Project Name]	REVISED TO: [Revision Description]
CHECKED: [Signature]	DATE: [Date]	SIZE: [Drawing Size]	QUANTITY: [Quantity]
APPROVED: [Signature]	DATE: [Date]	CUSTOMER DRAWING: [Customer ID]	REVISED TO: [Revision Description]