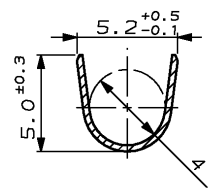
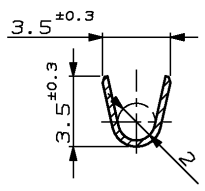
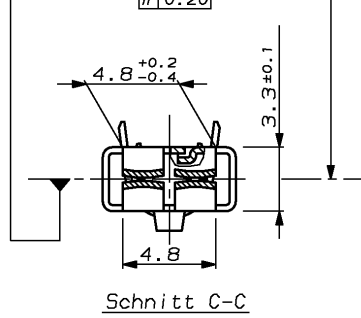
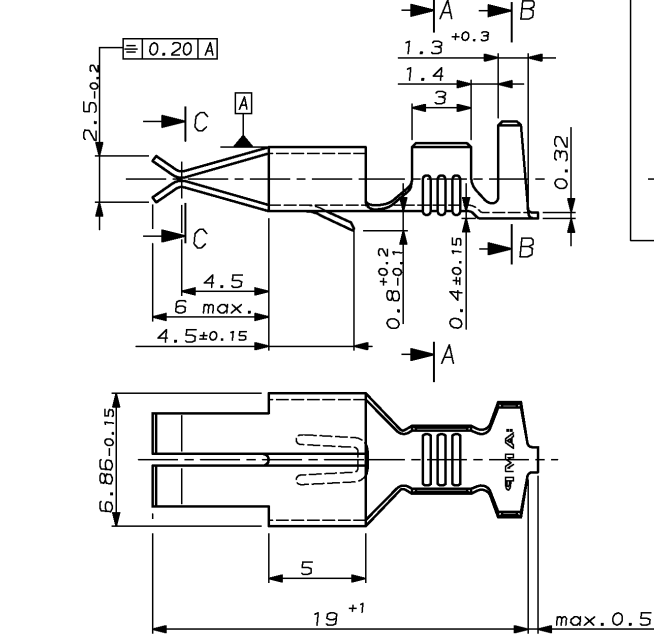


THIS DRAWING IS UNPUBLISHED. RELEASED FOR PUBLICATION. VERTRAULICHE UNVERÖFFENTLICHTE ZEICHNUNG. FREI FÜR VERÖFFENTLICHUNG. .19..

© COPYRIGHT 19- BY AMP INCORPORATED. ALL RIGHTS RESERVED. BY AMP INCORPORATED. ALLE RECHTE VORBEHALTEN. DATED WITH: PASSEND ZU: -

REVOLUTIONS		ÄNDERUNGEN		REVISIONS		
P	LTR	DESCRIPTION	DATE	DMN	APVD	
	W	Isolationsbereich angepaßt	22. Okt. 98	M. P.	M. B.	



Schnitt C-C

Schnitt A-A

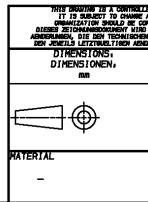
Schnitt B-B

REMARKS
Bemerkungen
⚠ Crimp vorgeformt

Kontakt geeignet für:
 Drahtgrößenbereich 1.0-2.5 mm²
 Isolationsbereich 2.4-3.7 mm Ⓜ

Leitungsquerschnitt in mm ² CROSS-SECTION IN mm ²	0.50	0.75	1.00	1.50	2.00	2.50	3.00	4.00	6.00
SINGLE CONNECTION Einzelanschl. Leg	X	X	X						
0.50	X	X	X						
0.75	X	X							
1.00	X	X							
1.50	X								
2.00									
2.50	X								
3.00									
4.00									
6.00									

AMP PART NO.	REV.	PCS.	MATERIAL	SURFACE COLOR	DESCRIPTION	ITEM NO.
925613-3	925612-3	W	-	CuFe 2	vorverzinkt Standard-Timer Contact	-
925613-2	925612-2	W	-	CuSn 4	vorverzinkt Standard-Timer Contact	-
925613-1	925612-1	W	-	CuZn 30	vorverzinkt Standard-Timer Contact	-



DIMENSIONS: DIMENSIONEN: mm	TOLERANCES UNLESS OTHERWISE SPECIFIED: ALLGEMEINTOLERANZEN
± 0.2	$\pm 2^\circ$
MATERIAL	FINISH/OBERFLÄCHE/FARBE

DMN 22-OCT-98	M. Pfeilschifter	11 JANGS	AMP	AMP Deutschland GmbH
CHK W. Bleicher				D - 63225 Langen
APVD -	NAME		Standard-Timer Contact	
PRODUCT SPEC 114-18080				
APPLICATION SPEC 108-18054				
SIZE A3	CAGE CODE 00779	DRAWING NO. 925612		RESTRICTED TO NUR FÜR
CUSTOMER DRAWING	/KUNDENZEICHNUNG	MASSSTAB 5:1	BLATT 1 OF 1	REV W

AMP 1470-19 REV 27 JUN 96

http://www.amp.com/stand/114/18080/114-18080-1-1