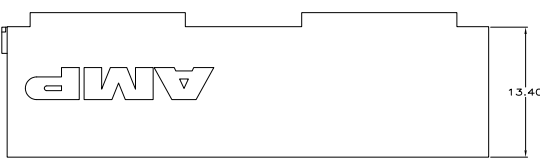
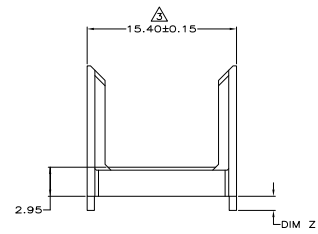
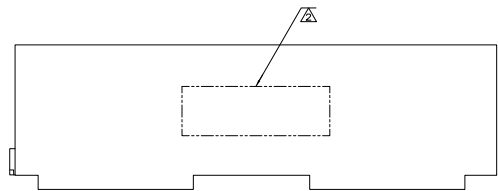
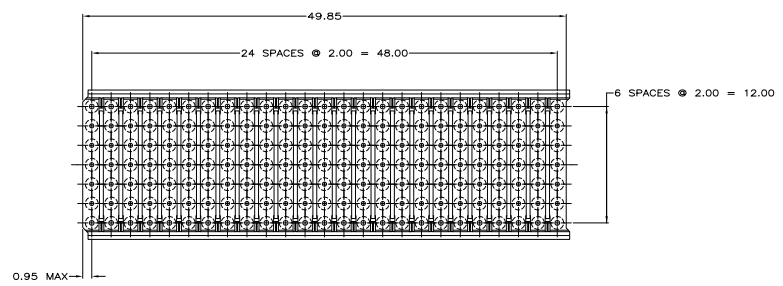


THIS DRAWING IS UNPUBLISHED
 RELEASED FOR PUBLIC USE
 BY AMP INCORPORATED. ALL RIGHTS RESERVED.

REV	DATE	DESCRIPTION	BY	CHK	APP
C1	REV PER EC	0018-0192-01	27 APR 81	BC	RP
C1	REVISED PER ECO	10-000443	15 MAR 81	KK	AEG
D	ECR-10-019054		15 SEP 79	DP	MGW



- ⚠ MATERIAL: GLASS FILLED POLYESTER.
- ⚠ PART NUMBER MARKED IN APPROXIMATE AREA SHOWN.
- ⚠ TO BE MEASURED AT BASE OF SHROUD.
- ⚠ OBSOLETE PARTS: OBSOLETE CIS STREAMLINING PER D.RENAUD/D.SINISI



OBsolete	1.90	646479-7
	1.70	646479-6
	1.50	646479-5
	1.30	646479-4
OBsolete	1.10	646479-3
	0.90	646479-2
		646479-1
	DIM Z	PART NUMBER

THIS DRAWING IS A CONTROLLED DOCUMENT

DESIGNED BY: T. SHEY 11-18-78
 DRAWN BY: R. SKIFFER 11-29-78
 CHECKED BY: R. SKIFFER 11-29-78

AMP Incorporated
 Harrisburg, PA 17105-3608

SHROUD, TYPE B,Z-PACK 2mm HM,
 5 ROW, 175 POSITION

SEE SIZE CODE DRAWING NO. A100779
 PART NO. 646479

CUSTOMER DRAWING

DATE: 5-11-81
 BY: 1
 APP: D