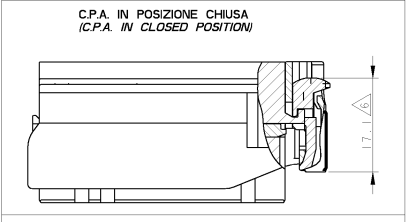
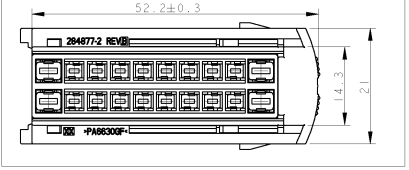




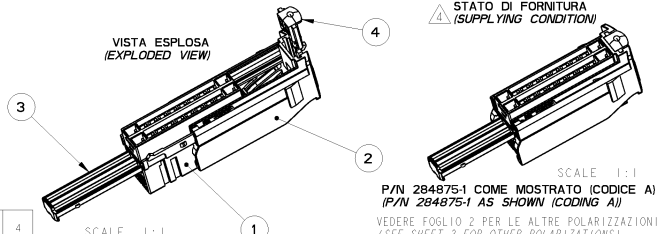
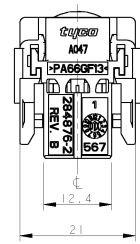
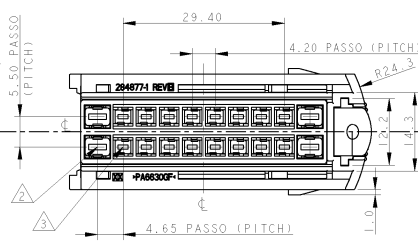
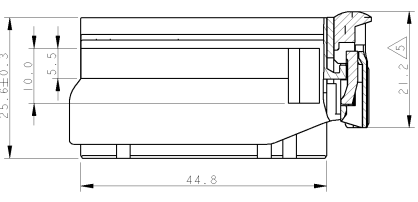
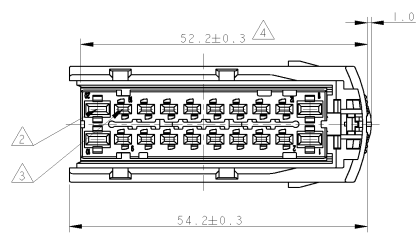
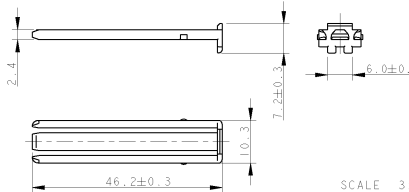
SLITTA IN POSIZIONE CORRETTA PER ACCOPPIAMENTO DEL CONNETTORE CON CONTROPARTE (SLIDE IN PROPER POSITION TO MATE THE CONNECTOR WITH COUNTERPART)



VERSIONE SENZA CPA (POLARIZZAZIONI -2, -4, -5, -6) (VERSION WITHOUT CPA (POLARIZATION -2, -4, -5, -6))



SECONDARY LOCK FORNITO NELL' IMBALLO IN PARI QUANTITÀ (SECONDARY LOCK SUPPLIED IN THE BOX IN THE SAME QUANTITY)



NOTES :

- IL CONNETTORE SI ACCOPPIA CON LA CONTROPARTE P/N 284879 (CONNECTOR MATEABLE WITH COUNTERPART P/N 284879)
- N. RO 4 CAVITÀ ADATTE PER CONTATTI FEMMINA AMP MCP 2.8 STAGNATI (N. 4 CAVITIES SUITABLE FOR AMP MCP 2.8 SOCKET CONTACTS TIN PLATED)
P/N 1241388-1 : ADATTO PER BANGO FILO 0.5-1.0 sqmm (SUITABLE FOR 0.5-1.0 sqmm WIRE SECTION)
P/N 1241390-1 : ADATTO PER BANGO FILO >1.0-2.5 sqmm (SUITABLE FOR >1.0-2.5 sqmm WIRE SECTION)
- N. RO 16 CAVITÀ ADATTE PER CONTATTI FEMMINA AMP MCP 1.5 STAGNATI (N. 16 CAVITIES SUITABLE FOR AMP MCP 1.5 SOCKET CONTACTS TIN PLATED)
P/N 1241372-1 : ADATTO PER BANGO FILO 0.2-0.35 sqmm (SUITABLE FOR 0.2-0.35 sqmm WIRE SECTION)
P/N 1241374-1 : ADATTO PER BANGO FILO 0.5-1.0 sqmm (SUITABLE FOR 0.5-1.0 sqmm WIRE SECTION)
P/N 1534334-1 : ADATTO PER BANGO FILO >1.0-1.5 sqmm (SUITABLE FOR >1.0-1.5 sqmm WIRE SECTION)
- IL CONNETTORE VIENE FORNITO CON SLITTA IN POSIZIONE CHIUSA; IL DISPOSITIVO DI AGGANCIO SECONDARIO VIENE FORNITO IN KIT NELLA STESSA SCATOLA IN PARI QUANTITÀ (CONNECTOR IS SUPPLIED WITH SLIDE IN CLOSED POSITION; SECONDARY LOCK IS SUPPLIED IN KIT IN THE SAME BOX AND QUANTITY)
- C.P.A. IN POSIZIONE PRE-ASSEMBLATA (C.P.A. IN PRE-ASSEMBLED POSITION)
- C.P.A. IN POSIZIONE CHIUSA, QUANDO IL CONNETTORE È CORRETTAMENTE ACCOPPIATO CON LA CONTROPARTE (C.P.A. IN CLOSED POSITION, WHEN THE CONNECTOR IS PROPERLY MATED WITH THE COUNTERPART)
- AGGANCIO SECONDARIO COMPLETAMENTE INSERITO, DOPO AVER POSIZIONATO I CONTATTI IN CAVITÀ (SECONDARY LOCK COMPLETELY MOUNTED, AFTER CONTACT INSERTION INTO CAVITIES)
- LE POLARIZZAZIONI -2 E -4 DIFFERISCONO DALLE -1 E -3 SOLAMENTE PER LA SEDE DEL C.P.A. CHIUSA. LA POLARIZZAZIONE -6 DIFFERISCE DALLA -2 SOLAMENTE PER IL COLORE DELLA SLITTA (POLARIZATION KEYS -2 AND -4 ARE DIFFERENT FROM -1 AND -3 ONLY FOR THE OCCUPIED SEAT FOR C.P.A. POLARIZATION KEY -6 IS DIFFERENT FROM -2 ONLY FOR SLIDE COLOUR)
- VERSIONE PER SOLUZIONE MODULARE. PER DIMENSIONI DI INGOMBRO VEDERE DISEGNO 284879 (VERSION FOR MODULAR SOLUTION. FOR OVERALL DIMENSIONS SEE DRAWING 284879)

Q.T.A' (QTY)	COLORE (COLOUR)	MATERIALE (MATERIAL)	DESCRIZIONE (DESCRIPTION)	NO. ITEM
1	GIALLO (YELLOW)	PA66 GF	C.P.A. OPZIONALE (C.P.A. OPTIONAL)	4
1	ROSSO (RED)	PA66 GF	SECONDARY LOCK	3
1	BLU, GRIGIO (BLUE, GRAY)	PA66 GF	SLITTA (SLIDE)	2
1	NERO, GRIGIO, MARRONE (BLACK, GREY, BROWN)	PA66 GF	BLOCCHETTO (HOUSING)	1

REV.	DATE	BY	CHKD	APPD	DESCRIPTION
0	25 JUL 2002				PRELIMINARY ISSUE
1	25 JUL 2002				UPDATE
A	23 MAR 2003				FIRST ISSUE (NAS 02-51125-1) ET00-0023-03
A1	24 SEP 2003				UPDATED (ET00-0166-03)
A2	23 JAN 2004				RELEASED FOR PRODUCTION (ET00-0003-04)
A3	1 MAR 2004				ADDED P/N 284875-5 (ET00-0051-04)
A4	07 FEB 2005				RELEASED FOR PRODUCTION P/N 284875-5 (ET00-0025-05)
B	01 AUG 2005				MODIF. CONNETTORE PER MIGLIORARE APERTURA SLITTA (MODIF. CONNECTOR FOR IMPROVE SLIDE OPENING ICR 03-03198)
B1	20 APR 2007				UPDATED REVISION LINES (ECR-07-109303)
B2	13 MAR 2007				ADDED P/N 284875-6 (ECR-07-016232)

MATERIALE (MATERIAL)	FINITURA (FINISH)	VEDERE TABELLA (SEE TABLE)
SEE TABLE	SEE TABLE	VEDERE TABELLA

CUSTOMER DRAWING	DISEGNO PER CLIENTE (DRAWING FOR CUSTOMER)	SCALE	FOGLIO	REV
2100779	2100779	5:1	1	B2

