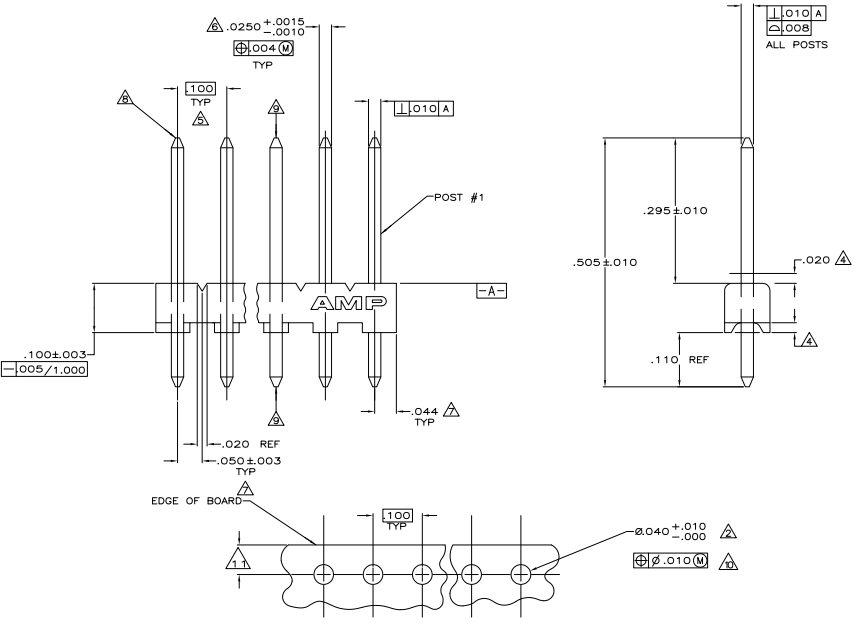
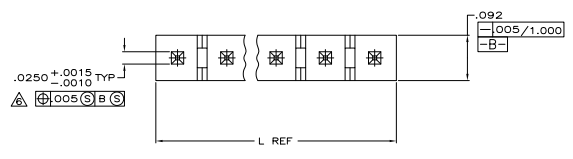


- △ MATERIAL:
 BASE: THERMOPLASTIC POLYESTER, UL 94V-0 (NATURAL).
 POST: COPPER ALLOY (TIN OR TIN LEAD PLATED, .000150 MIN THK).
- △ ONE HOLE MAY BE UNDERSIZED (.032-.035 DIA) FOR ASSEMBLY RETENTION DURING WAVE SOLDERING.
- 3 PARTS MUST COMPLY WITH AMP SOLDERABILITY SPEC 109-11-2.
- △ PLASTIC AROUND POST PERMISSIBLE IN THIS AREA ONLY.
- △ DIMENSION APPLIES WHEN HEADER IS HELD FLAT.
- △ MEASURED AT [-A-]
- △ COORDINATE DIMENSION APPLIES FROM CENTER OF ACTUAL FEATURE.
- △ RADIUS AT TIP PERMITTED, BOTH ENDS.
- △ POST MUST WITHSTAND 3.0 LB MIN AXIAL FORCE IN BOTH DIRECTIONS WITHOUT DISLODGING.
- △ SOLDER SIDE OF BOARD IS SHOWN.
- △ DIMENSION SHOULD BE .060 MIN WHEN MATING WITH A MTA 100 CONNECTOR ASSEMBLY OR A CST 100 CONNECTOR.
12. AMP LOGO MAY OR MAY NOT APPEAR ON MOLDING HOUSING.



REV	DATE	DESCRIPTION	BY	CHK
28	2.78870.82	28	5-644456-8	
27	2.68868.28	27	5-644456-7	
26	2.58865.74	26	5-644456-6	
25	2.48863.20	25	5-644456-5	
24	2.38860.66	24	5-644456-4	
23	2.28858.12	23	5-644456-3	
22	2.18855.58	22	5-644456-2	
21	2.08853.04	21	5-644456-1	
20	1.98850.50	20	5-644456-0	
19	1.88847.96	19	4-644456-9	
18	1.78845.42	18	4-644456-8	
17	1.68842.88	17	4-644456-7	
16	1.58840.34	16	4-644456-6	
15	1.48837.80	15	4-644456-5	
14	1.38835.26	14	4-644456-4	
13	1.28832.72	13	4-644456-3	
12	1.18830.18	12	4-644456-2	
11	1.08827.64	11	4-644456-1	
10	.98825.10	10	4-644456-0	
9	.88822.56	9	3-644456-9	
8	.78820.02	8	3-644456-8	
7	.68817.48	7	3-644456-7	
6	.58814.94	6	3-644456-6	
5	.48812.40	5	3-644456-5	
4	.3889.86	4	3-644456-4	
3	.2887.32	3	3-644456-3	
2	.1884.78	2	3-644456-2	

SUPERSEDED BY 5-644456-8	28	2.78870.82	28	2-644456-8
SUPERSEDED BY 5-644456-7	27	2.68868.28	27	2-644456-7
SUPERSEDED BY 5-644456-6	26	2.58865.74	26	2-644456-6
SUPERSEDED BY 5-644456-5	25	2.48863.20	25	2-644456-5
SUPERSEDED BY 5-644456-4	24	2.38860.66	24	2-644456-4
SUPERSEDED BY 5-644456-3	23	2.28858.12	23	2-644456-3
SUPERSEDED BY 5-644456-2	22	2.18855.58	22	2-644456-2
SUPERSEDED BY 5-644456-1	21	2.08853.04	21	2-644456-1
SUPERSEDED BY 4-644456-9	20	1.98850.50	20	2-644456-0
SUPERSEDED BY 4-644456-8	19	1.88847.96	19	1-644456-9
SUPERSEDED BY 4-644456-7	18	1.78845.42	18	1-644456-8
SUPERSEDED BY 4-644456-6	17	1.68842.88	17	1-644456-7
SUPERSEDED BY 4-644456-5	16	1.58840.34	16	1-644456-6
SUPERSEDED BY 4-644456-4	15	1.48837.80	15	1-644456-5
SUPERSEDED BY 4-644456-3	14	1.38835.26	14	1-644456-4
SUPERSEDED BY 4-644456-2	13	1.28832.72	13	1-644456-3
SUPERSEDED BY 4-644456-1	12	1.18830.18	12	1-644456-2
SUPERSEDED BY 4-644456-0	11	1.08827.64	11	1-644456-1
SUPERSEDED BY 3-644456-9	10	.98825.10	10	1-644456-0
SUPERSEDED BY 3-644456-8	9	.88822.56	9	644456-9
SUPERSEDED BY 3-644456-7	8	.78820.02	8	644456-8
SUPERSEDED BY 3-644456-6	7	.68817.48	7	644456-7
SUPERSEDED BY 3-644456-5	6	.58814.94	6	644456-6
SUPERSEDED BY 3-644456-4	5	.48812.40	5	644456-5
SUPERSEDED BY 3-644456-3	4	.3889.86	4	644456-4
SUPERSEDED BY 3-644456-2	3	.2887.32	3	644456-3
SUPERSEDED BY 3-644456-1	2	.1884.78	2	644456-2

LEADFREE	NO. OF POSTS	NO. OF CIRCUITS	
		IN	MM
YES			
NO			
LEADFREE			

THIS DRAWING IS A CONTROLLED DOCUMENT. (MFG. CONTROL) (REV. CONTROL)

TE Connectivity

MTA-100 HEADER ASSEMBLY (NARROW, .025 SQUARE STRAIGHT POST, TIN PLATED)

DATE: 10/11

CUSTOMER DRAWING: A100779G-644456