

4

3

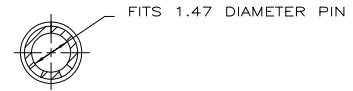
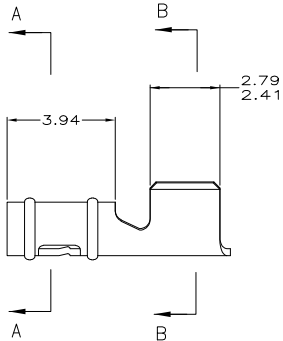
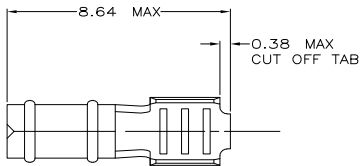
2

1

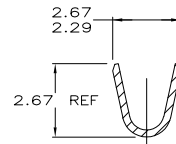
THIS DRAWING IS UNPUBLISHED. RELEASED FOR PUBLICATION
 © COPYRIGHT BY TYCO ELECTRONICS CORPORATION. ALL RIGHTS RESERVED.

LOC	DIST	REVISIONS				
		REV	DESCRIPTION	DATE	BY	APP'D
CM	0	F	LTR			
		E	REV PER ECO-07-004858	02MAR07	KW	DB

△ 0.00203 MIN MATTE TIN PLATING OVER ALL.
 2. WIRE RANGE: 0.3 - 1 MM² (22 - 17 AWG)



SECTION A-A



SECTION B-B

△	0.25 BE CU	640024-1
FINISH	MATERIAL	PART NUMBER

0.38	.015	2.67	.105	-	-
0.25	.010	2.41	.095	8.64	.340
0.13	.005	2.29	.090	3.94	.155
0.00203	0.00080	1.47	.058	2.79	.110
MM	IN	MM	IN	MM	IN

CONVERSION TABLE



THIS DRAWING IS A CONTROLLED DOCUMENT.		DIM T. BECK 6-10-97 CHK 6-10-97 R. SWING 6-10-97 A. BEDDICK 6-17-97 NAME PRODUCT SPEC 108-1025 APPLICATION SPEC 114-1008 HEIGHT - CUSTOMER DRAWING	Tyco Electronics Corporation Harrisburg, PA 17105-3608 RECEPTACLE, .058 DIAMETER, 22-17 AWG, LOOSE PIECE, P.C. CONTACT SIZE CASE CODE DRAWING NO A2 00779 C=640024 SCALE 10:1 SHEET 1 of 1 REV E
DIMENSIONS: mm	TO DIMENSIONS UNLESS OTHERWISE SPECIFIED		
0 PLG ± -	1 PLG ± -		
2 PLG ± 0.13	3 PLG ± -		
4 PLG ± -	ANGLES ± -		
MATERIAL SEE TABLE	FINISH SEE TABLE		

AMP 1471-9 REV 31MMR2000

640024-0024