

THIS DRAWING IS UNPUBLISHED. RELEASED FOR PUBLICATION. COPYRIGHT - By - ALL RIGHTS RESERVED.

REV	DATE	DESCRIPTION	DATE	BY	APPD
CH	11				
D2		REVISED PER ECO-11-004917	11MAR11	RK	HMR

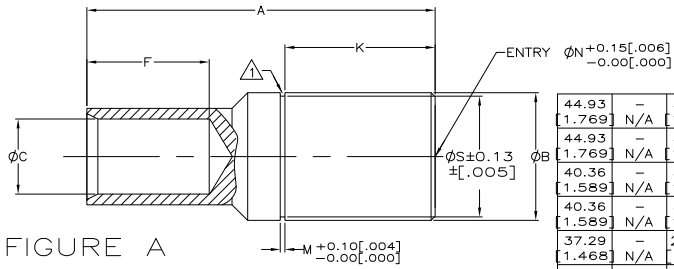


FIGURE A

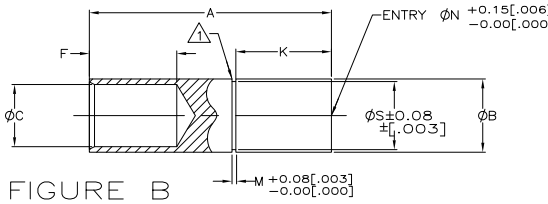


FIGURE B

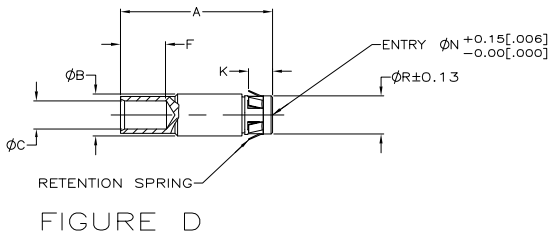


FIGURE D

44.93	-	35.10	1.73	55.88	53.6	36.19	47.62	140.5	A	35mm	1000	1-193673-9	3	
1.769	N/A	1.382	.068	2.200	2.11	1.425	1.875	5.53						
44.93	-	35.10	1.73	55.88	45	30.43	47.62	129.5	A	35mm	700	1-193673-8	3	
1.769	N/A	1.382	.068	2.200	1.77	1.198	1.875	5.10						
40.36	-	30.12	1.73	55.88	53.6	36.19	42.80	139.4	B	30mm	1000	1-193673-7	3	
1.589	N/A	1.186	.068	2.200	2.11	1.425	1.685	5.49						
40.36	-	30.12	1.73	55.88	45	30.43	42.80	127.2	A	30mm	700	1-193673-6	3	
1.589	N/A	1.186	.068	2.200	1.77	1.198	1.685	5.01						
37.29	-	25.09	1.73	55.88	50.8	34.98	40.66	135.4	B	25mm	900	1-193673-5	3	
1.468	N/A	.988	.068	2.200	2.00	1.377	1.601	5.33						
37.29	-	25.09	1.73	55.88	41.7	27.94	40.66	123.4	A	25mm	600	1-193673-4	3	
1.468	N/A	.988	.068	2.200	1.64	1.100	1.601	4.86						
25.35	-	20.09	1.42	35.56	32.5	23.11	27.23	89.9	B	20mm	400	1-193673-3	3	
.998	N/A	.791	.056	1.400	1.28	.910	1.072	3.54						
25.35	-	20.09	1.42	35.56	25.9	18.31	27.23	80.5	A	20mm	MCM	1-193673-2		
.998	N/A	.791	.056	1.400	1.02	.721	1.072	3.17						
22.40	-	16.10	1.17	33.02	28.4	20.04	23.57	80	B	16mm	300	1-193673-1	3	
.882	N/A	.634	.046	1.300	1.12	.789	.928	3.15						
22.40	-	16.10	1.17	33.02	24.1	16.94	23.57	73.9	A	16mm	4/0	1-193673-0	3	
.882	N/A	.634	.046	1.300	.95	.677	.928	2.91						
18.62	-	12.09	1.17	30.48	24.1	17.22	20.19	70.1	B	12mm	4/0	1-193673-9	3	
.733	N/A	.476	.046	1.200	.95	.678	.795	2.76						
18.62	-	12.09	1.17	30.48	19.6	13.74	20.19	63.7	A	12mm	2/0	193673-8		
.733	N/A	.476	.046	1.200	.77	.541	.795	2.51						
SEE SHEET 2											8mm	1/0	193673-7	
-	13.51	8.10	-	5.2	14.2	9.91	14.45	57.4	D	8mm	2	193673-6		
N/A	.532	.319	N/A	[.21]	[.56]	.390	.569	2.26						
-	9.45	6.04	-	5.2	11.4	7.36	10.41	37.6	D	6mm	4	193673-5		
N/A	.372	.238	N/A	[.21]	[.45]	.290	.410	1.48						
-	9.45	6.04	-	5.2	9.4	5.97	10.41	36.1	D	6mm	6	193673-4		
N/A	.372	.238	N/A	[.21]	[.37]	.235	.410	1.42						
-	6.65	4.09	-	6.2	9.1	4.60	7.62	33.3	D	4mm	8	193673-3		
N/A	.262	.161	N/A	[.25]	[.36]	.181	.300	1.31						
-	6.65	4.09	-	6.2	9.1	3.68	7.62	33.3	D	4mm	10	193673-2		
N/A	.262	.161	N/A	[.25]	[.36]	.145	.300	1.31						
-	4.75	2.23	-	5.2	9.1	2.54	5.89	28.7	D	2mm	12/14	193673-1		
N/A	.187	.088	N/A	[.21]	[.36]	[.105]	.232	1.13						
ØS	ØR	ØN	M	K	F	ØC	ØB	A	FIGURE	MATING Ø PIN	WIRE AWG	PART NUMBER		

- 1. OBSOLETE PARTS: OBSOLETE CIS STREAMLINING PER D.RENAUD/D.SINISI
- 2. ALL DIMENSIONS ARE REFERENCE ONLY.
- 3. GROOVE PROVIDED FOR USE WITH COMMERCIALY AVAILABLE RETAINING RINGS, I.E. MS-16624 TYPE.

THIS DRAWING IS A CONTROLLED DOCUMENT.

DW	TURNER	09-10-93
AL	G.	09-10-93
APD	S.R.S.	09-10-93

TE Connectivity

SOCKET ASSY, 2-35mm, CRIMP

SIZE: A2 CASE CODE: 00779 DRAWING NO: 193673

RESTRICTED TO: NTS SHEET 1 OF 2 REC'D2

MATERIAL: BODY-COPPER ALLOY, RETENTION SPRING: STAINLESS STEEL, CONTACT BAND: ENCL.

FINISH: BODY AND BAND: SILVER OVER NICKEL, SPRING: NONE

CUSTOMER DRAWING

4

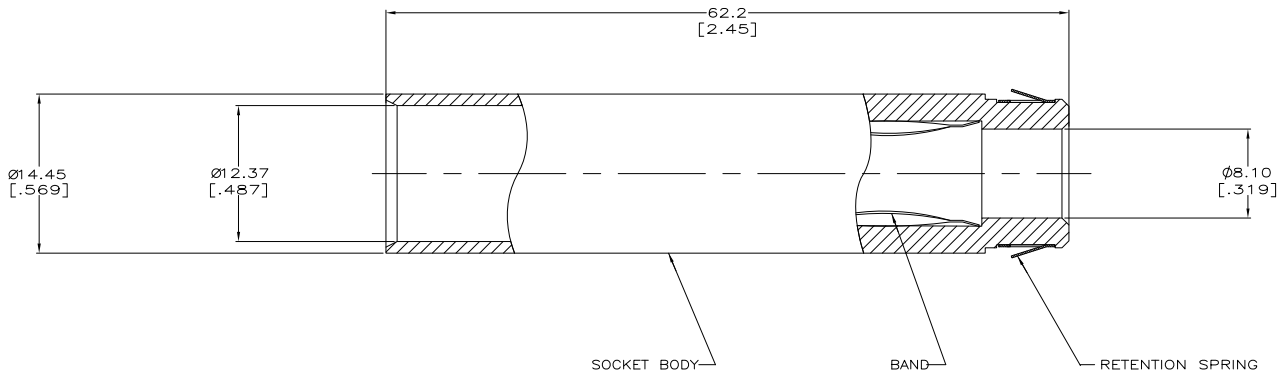
3

2

1

THIS DRAWING IS UNPUBLISHED. RELEASED FOR PUBLICATION
 © COPYRIGHT - By - ALL RIGHTS RESERVED.

LOC	DIST	REVISIONS			
F	LR	DESCRIPTION	DATE	DRN	APD
CH	11	SEE SHEET 1	-	-	-



THIS DRAWING IS A CONTROLLED DOCUMENT.		DRN	R. N. POLK	17/OCT/97	TE Connectivity	
DIMENSIONS: mm(0.1)		CHK	-	-	SOCKET ASSY, 2-35mm, CRIMP	
TOLERANCES UNLESS OTHERWISE SPECIFIED:		NAME	-	-	RESTRICTED TO	
0 P.L.C.	± .05	PRODUCT SPEC	-	-	-	
1 P.L.C.	± .02	APPLICATION SPEC	-	-	SIZE	CAGE CODE
2 P.L.C.	± .01	WEIGHT	-	-	A2	00779
3 P.L.C.	± .005	CUSTOMER DRAWING	-	-	C=	193673
4 P.L.C.	± .002	SCALE	-	-	SHEET	2 of 2
ANGLES	± .005	DATE	-	-	REV	D2
FINISH	-					

1471-9 (3/11)

193673