

4

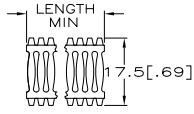
3

2

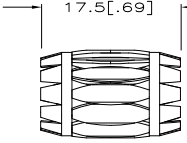
1

THIS DRAWING IS UNPUBLISHED. RELEASED FOR PUBLICATION
 BY TYCO ELECTRONICS CORPORATION. ALL RIGHTS RESERVED.

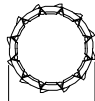
LOC	DIST	REVISIONS					
FT	0	F	LR	DESCRIPTION	DATE	BY	APPD
		P1		REVISED PER ECO-09-020935		OSSEPOB	KK AEG



STYLE C
 (STRIP)



STYLE B



NOTES:

1. FINISH: GOLD PLATE 10uIN MINIMUM.
2. FINISH: SILVER PLATE 200 uIN MINIMUM.
3. FINISH: NICKEL PLATE 40 uIN MINIMUM.
4. FINISH: NICKEL PLATE 100 uIN MINIMUM.
- 5.
- 6.
- 7.
8. NESTED AND WELDED 13 AND 14 LOUVERED BAND.
- 9.
- 10.
11. PLATING NOTES ARE TO BE INTERPRETED AS FOLLOWS:
 6-8 AS 6 OVER 8.
12. PRODUCT IS SOLD BY THE FOOT. MINIMUM ORDER LENGTH IS 3 FEET.

13. PRELIMINARY PART NUMBER.

14. OBSOLETE PARTS: OBSOLETE CIS STREAMLINING PER D.RENAUD/D.SINISI

QTY	DESCRIPTION	UNIT	PRICE	TOTAL	DATE	BY	APPD
1	OBSOLETE [.72] B [.050] BeCu 19.7 [.775]						
1	[.72] B [.052] BeCu 19.7 [.775]						
1	[.50] B [.052] BeCu 12.7 [.500]						
1	[1.42] B [.048] BeCu 38.1 [1.500]						
1	[1.04] B [.048] BeCu 28.5 [1.121]						
1	[.82] B [.048] BeCu 22.2 [.875]						
1	[1.42] B [.050] BeCu 38.1 [1.500]						
1	[1.71] B [.050] BeCu 44.4 [1.750]						
1	[1.42] B [.048] BeCu 38.1 [1.500]						
1	[1.39] B [.050] BeCu 34.9 [1.375]						
1	[1.32] B [.050] BeCu 34.9 [1.375]						
1	[1.07] B [.050] BeCu 28.6 [1.129]						
1	[1.04] B [.048] BeCu 28.5 [1.121]						
1	[1.00] B [.050] BeCu 27.1 [1.068]						
1	[.94] B [.052] BeCu 25.4 [1.000]						
1	[.94] B [.050] BeCu 25.4 [1.000]						
1	[.94] B [.050] BeCu 25.4 [1.000]						
1	[1.70] B [.050] BeCu 22.2 [.875]						
1	[.78] B [.050] BeCu 22.2 [.875]						
1	[.81] B [.050] BeCu 22.2 [.875]						
1	[.69] B [.052] BeCu 19 [.750]						
1	[.65] B [.050] BeCu 17.4 [.687]						
1	[.56] B [.050] BeCu 15.9 [.625]						
1	[.53] B [.052] BeCu 15.7 [.620]						
1	[.53] B [.050] BeCu 15.7 [.620]						
1	[.53] B [.050] BeCu 15.7 [.620]						
1	[.50] B [.050] BeCu 12.7 [.500]						
1	[.50] B [.050] BeCu 12.7 [.500]						
1	[.50] B [.050] BeCu 12.7 [.500]						
1	[.50] B [.046] BeCu 12.7 [.500]						
1	[.43] B [.050] BeCu 11.1 [.437]						
1	[.34] B [.050] BeCu 7.9 [.312]						
1	[.30] B [.050] BeCu 7.9 [.312]						
1	[.90] IN 2-3 49 0.15 [.006] 01038 192007-8						
1	[.90] IN 2-3 49 0.15 [.006] 01038 192007-7						
1	66 FT UNPL 0.15 [.006] 01019 192007-6						
1	66 FT UNPL 0.15 [.006] 01019 192007-5						
1	66 FT 2-3 0.10 [.004] 01016 192007-4						
1	66 FT UNPL 0.10 [.004] 01018 192007-3						
1	66 FT 2-3 0.08 [.003] 01000 192007-2						
1	NOTE 12 UNPL 0.08 [.003] 01024 192007-1						

THIS DRAWING IS A CONTROLLED DOCUMENT.

DIMENSIONS: MM	TO DIMENSIONS UNLESS OTHERWISE SPECIFIED	DRN: S. JURICH 25JAN01	CHK: G. STEINHAUER 25JAN01	APPD: G. STEINHAUER 25JAN01	NAME: Tyco Electronics Corporation
MATERIAL: SEE TABLE	FINISH: SEE TABLE	LENGTH: 4.90 IN	PLATING: 2-3	NUM LOUV: 49	MAT'L THK: 0.15 [.006]
REF: (FREE DIA) STYLE LH	MATING PIN REF: 0	DATE: 25JAN01	BY: G. STEINHAUER	APPD: G. STEINHAUER	NAME: Tyco Electronics Corporation
					Harrisburg, PA 17105
					CONTACT BAND, MALE
					SIZE: A2
					CAGE CODE: 00779
					DRAWING NO: 192007
					RESTRICTED TO: -
					CUSTOMER DRAWING
					SCALE: NTS
					SHEET 1 OF 1
					REV: P1

AMP 1471-9 REV 31MM2000

192007

A

B

C

D

A

B

C

D

A

B