

4

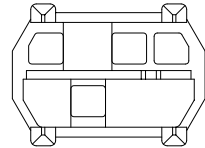
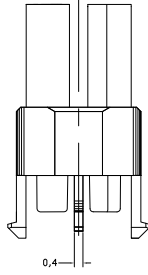
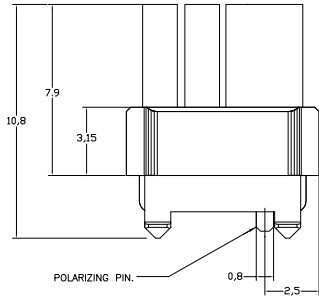
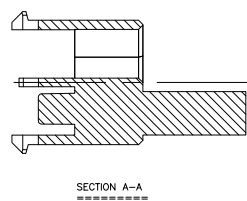
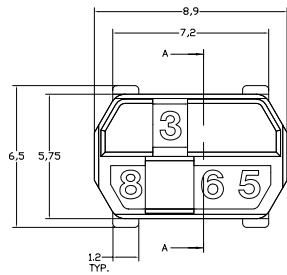
3

2

1

THIS DRAWING IS UNPUBLISHED. RELEASED FOR PUBLICATION. ALL RIGHTS RESERVED.

LOC		DST		REVISIONS			
W	LIK	DESCRIPTION	DATE	DN	APD		
D2		SHEET 2 DRAFTING ERROR CORRECTION	10NOV2011	A.S.	M.W.		



- NOTES:**
- ▲ DRAWING SHOWS CODING KEY 6-100525-3 WITH CODE NUMBER 3568 AS AN EXAMPLE. REINFORCED CODING KEYS ARE DESIGNED FOR THE 8 ROW CONNECTOR SYSTEM, BUT FIT THE 5 ROW CONNECTOR SYSTEM AS WELL.
 - ▲ DRAWING SHOWS CODING KEY 2-100525-4 WITH CODE NUMBER 1368 AS AN EXAMPLE.
 - ▲ MATERIAL: GLASSFILLED POLYAMIDE 6.6.; COLOUR: SEE TABLE.
 - ▲ EACH CODING KEY HAS FOUR BLOCKING PINS AND FOUR CAVITIES. THE NUMBERS ON TOP OF THE BLOCKING PINS FORM THE FOUR-FIGURE IDENTIFICATION NUMBER (ASCENDING).
 - ▲ PARTNUMBER MATCHING FEMALE CODING KEY, FOR REFERENCE ONLY.
 - ▲ 1 INSERTION TOOL INCLUDED PER 500 CODING KEYS.

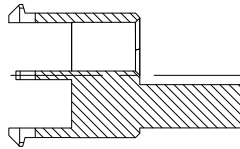
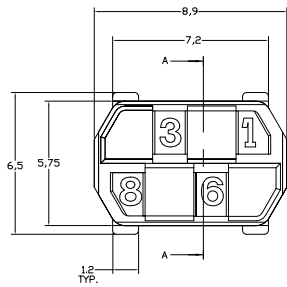
6-100526-3	PASTEL ORANGE	2003	3568	6-100525-3
6-100526-1	STEEL BLUE	5011	3478	6-100525-1
5-100526-9	SLATE GREY	7015	3467	5-100525-9
5-100526-6	CADMIUM YELLOW	1021	3456	5-100525-6
5-100526-4	RESADA GREEN	6011	2578	5-100525-4
3-100526-2	BRILLIANT BLUE	5007	1567	3-100525-2
100526-9	STRAWBERRY RED	3018	1248	100525-9
100526-3	NUT BROWN	8011	1236	100525-3

THIS DRAWING IS A CONTROLLED DOCUMENT. DW: D.TRUBSEN 03-FEB-98. CHK: D.TRUBSEN 03-FEB-98. E.V. KONINGSBRUGGE. NAME: TE Connectivity. PRODUCT SPEC: Z-PACK 2mm HM MALE CODING KEY. APPLICATION SPEC: -. SIZE: A2. CASE CODE: 00779. DRAWING NO: 100525. RESTRICTED TO: -. MATERIAL: -. FINISH: -. WEIGHT: -. CUSTOMER DRAWING. SCALE: 1:1. SHEET: 1 of 2. REV: D2.

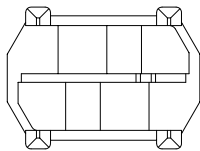
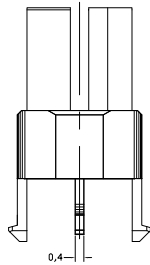
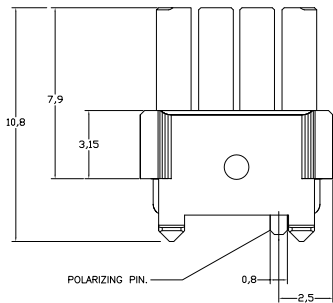
100525

THIS DRAWING IS UNPUBLISHED. RELEASED FOR PUBLICATION. ALL RIGHTS RESERVED.

REVISIONS				
NO	DATE	DESCRIPTION	BY	APP'D
1	-	SEE SHEET 1	-	-



SECTION A-A



NO	DESCRIPTION	QTY	UNIT	REVISION
6-100526-9	OCHER YELLOW	1024	4678	6-100525-9
6-100526-4	RASPBERRY RED	3027	3578	6-100525-4
5-100526-3	OCEAN BLUE	5020	2568	5-100525-3
5-100526-2	EMERALD GREEN	6001	2567	5-100525-2
4-100526-9	YELLOW ORANGE	2000	2467	4-100525-9
4-100526-8	HEATHER VIOLET	4003	2458	4-100525-8
4-100526-4	COPPER BROWN	8004	2368	4-100525-4
4-100526-3	STONE GREY	7030	2367	4-100525-3
3-100526-7	PURPLE RED	3004	2346	3-100525-7
3-100526-5	SALMON PINK	3022	1678	3-100525-5
3-100526-4	RED LILAC	4001	1578	3-100525-4
2-100526-7	LIGHT IVORY	1015	1457	2-100525-7
2-100526-6	PASTEL GREEN	6019	1456	2-100525-6
2-100526-4	YELLOW GREEN	6018	1368	2-100525-4
2-100526-0	BLUE LILAC	4005	1356	2-100525-0
1-100526-8	PIGEON BLUE	5014	1347	1-100525-8
1-100526-4	OLIVE YELLOW	1020	1268	1-100525-4
1-100526-3	CEMENT GREY	7033	1267	1-100525-3
1-100526-2	LIGHT GREEN	6027	1258	1-100525-2
100526-8	PURE ORANGE	2004	1247	100525-8
100526-5	ULTRAMARINE BLUE	5002	1238	100525-5
100526-2	GREEN BROWN	8000	1235	100525-2
FEMALE KEYS		COLOUR	RAL NR.	ID. NUMBER
		3	3	4

THIS DRAWING IS A CONTROLLED DOCUMENT. DATE: 03-FEB-98. DRAWN BY: D. TRUBSEN. CHECKED BY: D. TRUBSEN. APPROVED BY: L.V. KONINGSBRUGGE. NAME: ETE TE Connectivity. PRODUCT SPEC: Z-PACK 2mm HM MALE CODING KEY. APPLICATION SPEC: -. SIZE: A2. CASE CODE: 00779. DRAWING NO: 100525. WEIGHT: -. FINISH: -. MATERIAL: -. CUSTOMER DRAWING. SCALE: 1:1. SHEET: 2 of 2. REV: D2.