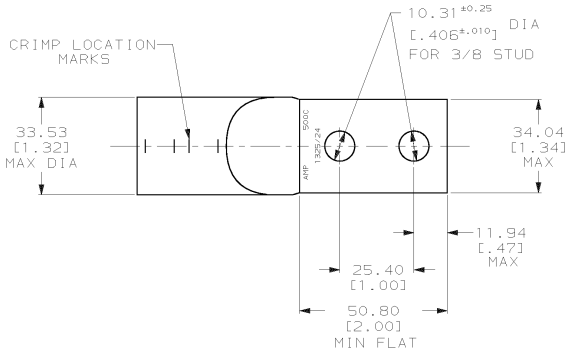
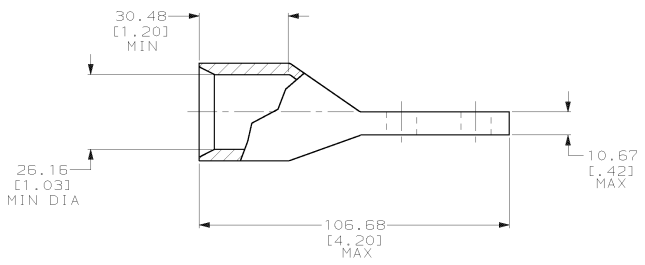


DRAWING MADE IN THIRD ANGLE PROJECTION
 THIS DRAWING IS UNPUBLISHED. RELEASED FOR PUBLICATION .19
 © COPYRIGHT 19 BY AMP INCORPORATED. ALL INTERNATIONAL RIGHTS RESERVED.

| LOC | | DIST | | ZONE | | LTR | | REVISIONS | | DATE | APPD |
|-----|----|------|---|------|--|-----|--|-----------|----------------------|---------|------|
| 6 | 86 | P | F | | | | | D | REV PER 063A-0561-01 | 030CT02 | MS |



△ TIN PL 0.00381 [0.000150] MIN THK PER ASTM B-545
 2 CRIMP DIES: USE P/N 46756-2 (600 MCM)



METRIC

| | | | |
|---|--|----------------------------|---|
| | | 55831-2 | |
| | | PART NO | |
| DO NOT SCALE PRINT. UNLESS SPECIFIED DIMENSIONS IN mm [INCHES] TOLERANCES ON: 2 PLC DEC ± 0.51 [0.020] 3 PLC DEC ± - ANGLES ± - | | DR 2/6/92 DK SCHRUM | AMP Incorporated Harrisburg, PA 17105-3608 |
| MATERIAL COPPER PER ASTM B-75 ANNEALED | | CHK 2/7/92 AJ KAUFMAN | |
| FINISH △ | | APPD 2/7/92 WJ VOCKROTH | NAME TERMINAL, CENTER LINE TONGUE, AMPPOWER™ WIRE SIZE: 500 HD MCM |
| APPLICATION SPEC - | | APPD 2/7/92 CR RHODS | PRODUCT SPEC - |
| SIZE C | | SCALE 1:1 | CAGE CODE 00779 |
| WEIGHT 279 GRAMS | | DRAWING NO 55831 | |
| | | SHEET 1 OF 1 | |