

4

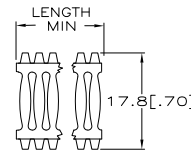
3

2

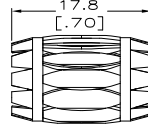
1

THIS DRAWING IS UNPUBLISHED.		RELEASED FOR PUBLICATION		---		---		---		
COPYRIGHT		BY TYCO ELECTRONICS CORPORATION		ALL RIGHTS RESERVED						
[.052]	---	BeCu	NOTE 12	---	3-2	---	0.25[.010]	---	4-192008-4	△
[.052]	---	BeCu	NOTE 12	---	3-2	---	0.20[.008]	---	4-192008-3	△
[.050]	[1.40]	BeCu		---	3-2	44	0.15[.006]	---	4-192008-2	△
[.052]	[2.00]	BeCu		58.4[2.300]	UNPL	72	0.25[.010]	---	4-192008-1	△
[.052]	[2.00]	BeCu		58.4[2.300]	3-2	72	0.25[.010]	---	4-192008-0	△
[.050]	[1.29]	BeCu		34.9[1.375]	3-2	41	0.15[.006]	01324	3-192008-9	△
[.048]	[1.04]	CNCL		33.0[1.300]	UNPL	33	0.15[.006]	01312	3-192008-8	△
[.050]	[1.26]	BeCu		33.0[1.300]	3-2	40	0.15[.006]	01238	3-192008-7	△
[.050]	[1.16]	BeCu		31.8[1.250]	3-2	37	0.15[.006]	01237	3-192008-6	△
[.050]	[1.16]	BeCu		31.8[1.250]	3-2	37	0.15[.006]	01231	3-192008-5	△
[.052]	[1.13]	BeCu		30.4[1.197]	3-2	36	0.20[.008]	01213	3-192008-4	△
[.052]	[1.13]	BeCu		30.4[1.197]	UNPL	36	0.20[.008]	01226	3-192008-3	△
[.050]	[1.13]	BeCu		30.4[1.197]	3-2	36	0.15[.006]	01114	3-192008-2	△
[.052]	[1.16]	BeCu		30.3[1.195]	3-2	37	0.20[.008]	01194	3-192008-1	△
[.050]	[1.10]	BeCu		30.2[1.188]	3-2	35	0.15[.006]	01212	3-192008-0	△
[.052]	[1.07]	BeCu		28.7[1.129]	3-2	34	0.20[.008]	01190	2-192008-9	△
[.050]	[1.07]	BeCu		28.7[1.129]	3-2	34	0.15[.006]	01191	2-192008-8	△
[.050]	[1.00]	BeCu		27.1[1.068]	3-2	32	0.15[.006]	01188	2-192008-7	△
[.052]	[.94]	BeCu		25.4[1.000]	3-2	30	0.20[.008]	01184	2-192008-5	△
[.052]	[.94]	BeCu		25.4[1.000]	UNPL	30	0.20[.008]	01183	2-192008-4	△
[.050]	[.94]	BeCu		25.4[1.000]	3-2	30	0.15[.006]	01182	2-192008-3	△
[.050]	[.94]	BeCu		25.4[1.000]	UNPL	30	0.15[.006]	01180	2-192008-2	△
[.052]	[.81]	BeCu		22.3[.879]	3-2	26	0.20[.008]	01171	2-192008-1	△
[.052]	[.81]	BeCu		22.3[.879]	UNPL	26	0.20[.008]	01221	2-192008-0	△
[.050]	[.81]	BeCu		22.3[.879]	3-2	26	0.15[.006]	01277	1-192008-9	△
[.052]	[.75]	BeCu		20.2[.796]	3-2	24	0.20[.008]	01162	1-192008-8	△
[.052]	[.75]	BeCu		20.2[.796]	UNPL	24	0.20[.008]	01222	1-192008-7	△
[.052]	[.72]	BeCu		19.8[.781]	3-2	23	0.20[.008]	01159	1-192008-6	△
[.050]	[.72]	BeCu		19.8[.781]	3-2	23	0.15[.006]	01316	1-192008-5	△
[.052]	[.69]	BeCu		19.0[.750]	1-2	22	0.20[.008]	01236	1-192008-4	△
[.052]	[.69]	BeCu		19.0[.750]	3-2	22	0.20[.008]	01158	1-192008-3	△
[.052]	[.69]	BeCu		19.0[.750]	UNPL	22	0.20[.008]	01295	1-192008-2	△
[.050]	[.69]	BeCu		19.0[.750]	1-2	22	0.15[.006]	01160	1-192008-1	△
[.050]	[.69]	BeCu		19.0[.750]	3-2	22	0.15[.006]	01157	1-192008-0	△
[.050]	[.69]	BeCu		19.0[.750]	UNPL	22	0.15[.006]	---	192008-9	△
[.052]	[.56]	BeCu		16.0[.630]	3-2	18	0.20[.008]	01149	192008-8	△
[.050]	[.53]	BeCu		14.1[.554]	3-2	17	0.15[.006]	01142	192008-7	△
[.050]	[.49]	BeCu		12.7[.500]	3-2	14	0.15[.006]	01140	192008-6	△
[.050]	[.49]	BeCu		12.7[.500]	UNPL	14	0.15[.006]	01215	192008-5	△
[.050]	---	BeCu	[6.20]	---	3-2	52	0.15[.006]	01040	192008-4	△
[.050]	---	BeCu	NOTE 12	---	3-2	---	0.15[.006]	01014	192008-3	△
[.050]	---	BeCu	NOTE 12	---	UNPL	---	0.15[.006]	01042	192008-2	△
[.050]	---	BeCu	NOTE 12	---	3-2	---	0.10[.004]	01050	192008-1	△

LOC	DIST	REVISIONS					
FT	0	P	LTR	DESCRIPTION	DATE	BY	APD
		H		REVISED PER DG39-0274-03	4/14/03	SS	GS
		H1		REVISION PER ECO-09-020935	05SEP09	KK	AEQ



STYLE C  
(STRIP)



STYLE B  
(MALE)

(FREE DIA)

NOTES:

1. FINISH: GOLD PLATE 10 uIN MIN.
2. FINISH: NICKEL PLATE 40 uIN MIN.
3. FINISH: SILVER PLATE 200 uIN MIN.
4. NOT USED.
5. NOT USED.
6. NOT USED.
7. NOT USED.
8. NOT USED.
9. NOT USED.
10. NOT USED.
11. PLATING NOTES TO BE INTERPRETED AS FOLLOWS, 3-2 AS 3 OVER 2.
12. PRODUCT IS SOLD BY FOOT, 3 FEET MINIMUM.

△ PRELIMINARY PART NUMBER.

△ OBSOLETE PARTS: OBSOLETE CIS STREAMLINING PER D.RENAUD/D.SINISI

THIS DRAWING IS A CONTROLLED DOCUMENT.		DRG	CG-30-92	RA JAYNE	Tyco Electronics Corporation Harrisburg, PA 17105	
DIMENSIONS: INCHES		PLC	---	APVD	CONTACT BAND, MALE	
OTHER DIMENSIONS: MILLIMETERS		PLC	---	NAME	---	
MATERIAL		PLC	---	PRODUCT SPEC	---	
FINISH		PLC	---	APPLICATION SPEC	---	
SEE TABLE	SEE TABLE	PLC	---	SIZE	CAGE CODE	DRAWING NO.
		PLC	---	A2	00779	C=192008
		PLC	---	RESTRICTED TO	---	
		PLC	---	CUSTOMER DRAWING	SCALE	NTS
		PLC	---		SHEET	1 OF 1
		PLC	---		REV	H1

AMP 1471-9 REV 31MM2000

192008B

B

A

A

A

A

A

A

A

A

A

A

A

A

A

A

A

A

A

A

A