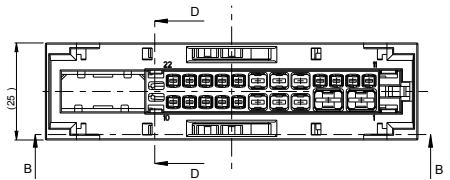
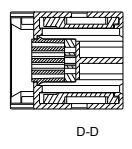
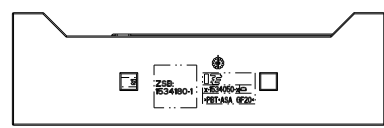
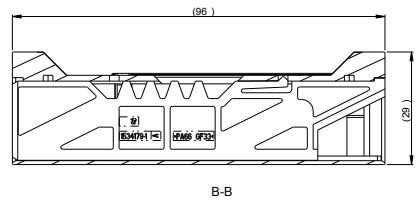
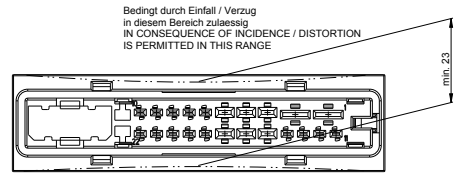
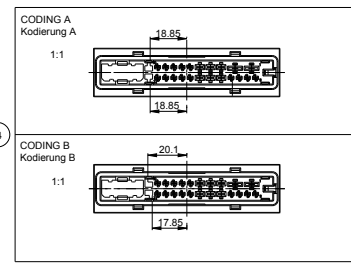
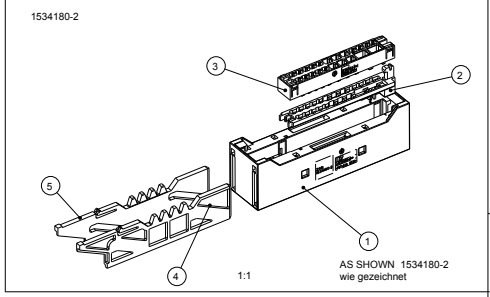
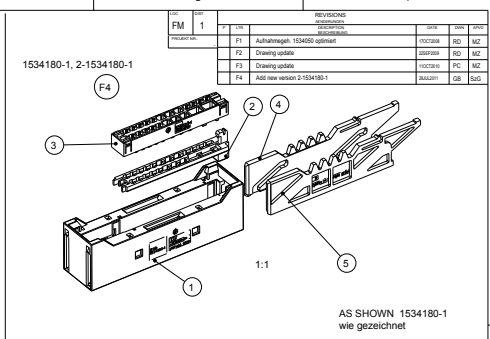


Notes
 1 PACKAGING: INTERLAYER PACKAGING IN CURRUGATED BOX

Bemerkungen
 1 Verpackung: Lagenweise im Karton



AS SHOWN 1534180-1
 wie gezeichnet



Rev.	Col.	Part-No.	Tab-No.	Material	COLOUR	Face	DESCRIPTION	ITER	QTY
		1534179-1	PA66-GF33	BLACK / schwarz			SLIDE LEFT / Schieber, links	1	5
		1534178-1	PA66-GF33	BLACK / schwarz			SLIDE RIGHT / Schieber, rechts	1	4
		1534052-1	PA66-GF13	BLACK / schwarz			HOLDER PLATE / Halteplatte	1	3
		1534051-1	PA66-GF30	VIOLET / violett			RETAINER / Halter	1	2
		2-1534050-1	PBT+ASA-GF20	WHITE / weiss			CARRIER HSG. / Aufnahmegeh.	1	1
		1534179-1	PA66-GF33	BLACK / schwarz			SLIDE LEFT / Schieber, links	1	5
		1534178-1	PA66-GF33	BLACK / schwarz			SLIDE RIGHT / Schieber, rechts	1	4
		1534052-1	PA66-GF13	BLACK / schwarz			HOLDER PLATE / Halteplatte	1	3
		1534051-1	PA66-GF30	VIOLET / violett			RETAINER / Halter	1	2
		1534050-2	PBT+ASA-GF20	BLACK / schwarz			CARRIER HSG. / Aufnahmegeh.	1	1
		1534179-1	PA66-GF33	BLACK / schwarz			SLIDE LEFT / Schieber, links	1	5
		1534178-1	PA66-GF33	BLACK / schwarz			SLIDE RIGHT / Schieber, rechts	1	4
		1534052-1	PA66-GF13	BLACK / schwarz			HOLDER PLATE / Halteplatte	1	3
		1534051-1	PA66-GF30	VIOLET / violett			RETAINER / Halter	1	2
		1534050-1	PBT+ASA-GF20	BLACK / schwarz			CARRIER HSG. / Aufnahmegeh.	1	1

THIS DRAWING IS A CONTROLLED DOCUMENT

REC. HOUSING 32POS. MCP. SUB-ASSY.
 Buchsengehäuse 32pol. MCP, ZSB

DATE CODE: 100779

CUSTOMER DRAWING