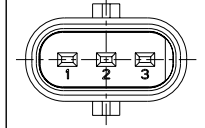
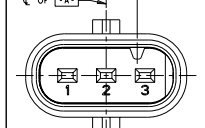


REV	DATE	DESCRIPTION	BY	CHK	APP
IN	00				
P		REVISED PER ECO-11-005030			

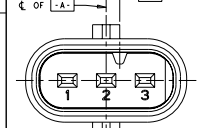
KEYING CONFIGURATIONS



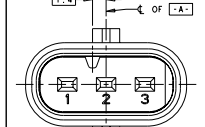
NO KEYING OPTION



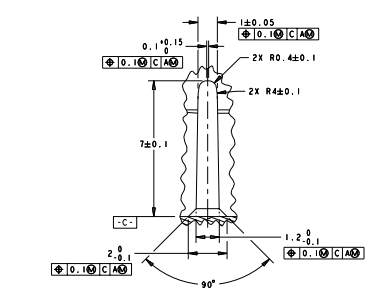
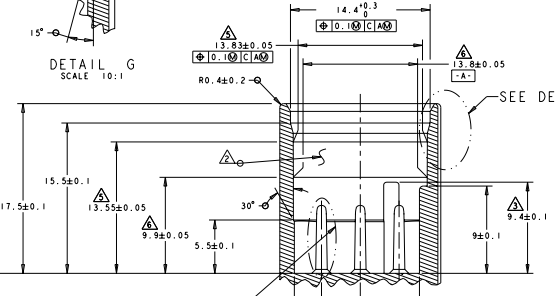
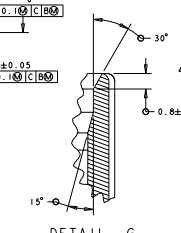
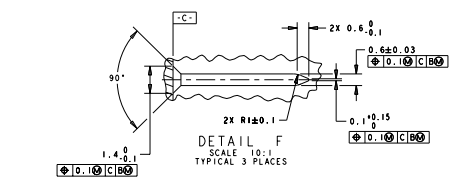
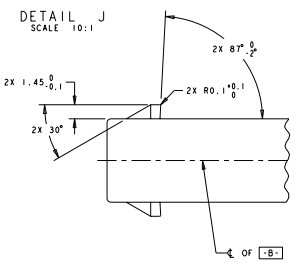
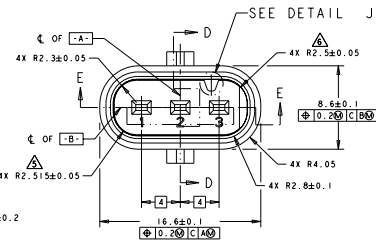
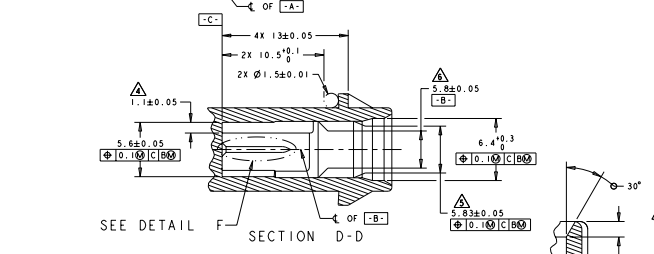
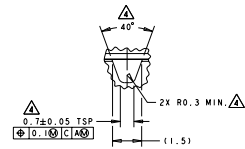
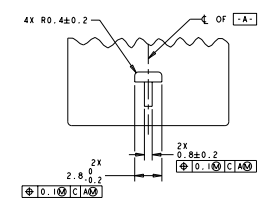
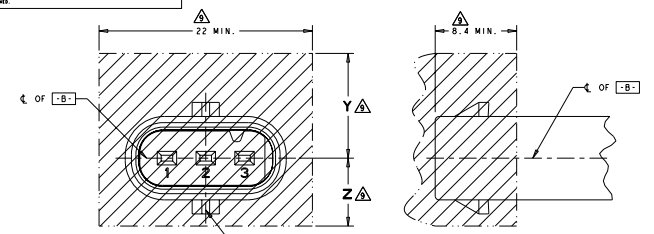
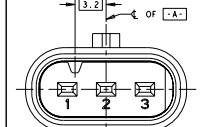
KEYING OPTION D



KEYING OPTION B



KEYING OPTION A



- KEYING OPTION D SHOWN.
- SEALING SURFACE. NO WITNESS LINES OR DAMAGE PERMITTED.
- DRAFT WITHIN TOLERANCE.
- THIS DIMENSION APPLIES TO KEYING OPTIONS A, B, C, AND D.
- THIS DIMENSION TO BE MEASURED AT THE 13.55 DIMENSION.
- THIS DIMENSION TO BE MEASURED AT THE 9.9 DIMENSION.
- THIS NO KEYING OPTION TO BE USED FOR TESTING PURPOSES ONLY.
- CONTACT PINS TO BE FREE OF SHARP EDGES AND BURRS.
- CROSS-HATCHED AREA SHOWS THE MINIMUM REQUIRED CLEARANCE FOR THE MATING FEMALE CONNECTOR GEOMETRY. THE VALUES BELOW DEPEND ON THE MATING FEMALE CONNECTOR LATCH CONFIGURATION:

	TOP AND BOTTOM LATCH	10.8 MIN.	10.8 MIN.
TOP LATCH	7 MIN.	10.8 MIN.	
LATCH CONFIGURATION	Y	7 MIN.	Z

THIS DRAWING IS A CONTROLLED DOCUMENT.

REV. 1.0
 DATE: 28MAY2003
 DRAWN BY: MCELIN
 CHECKED BY: MCELIN
 DATE: 28MAY2003
 PART NO: 29MAY2003
 REV: 1.0
 DATE: 28MAY2003
 DRAWN BY: MCELIN
 CHECKED BY: MCELIN
 DATE: 28MAY2003

INTERFACE DRAWING
 3 POSITION SEALED; 1.2mm
 STANDARD VERSION

STY: 00779
 DATE: 28MAY2003
 CUSTOMER DRAWING

TE Connectivity