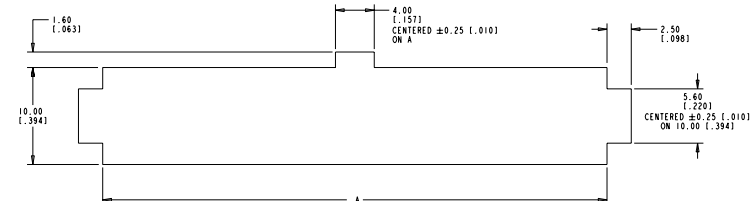
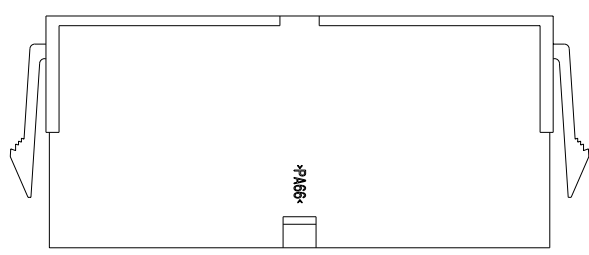
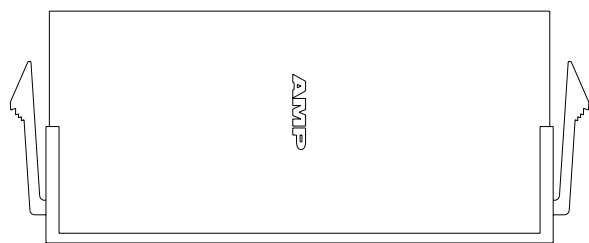
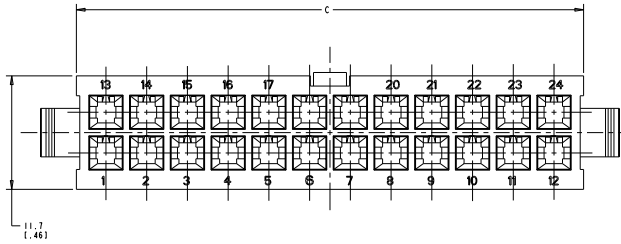
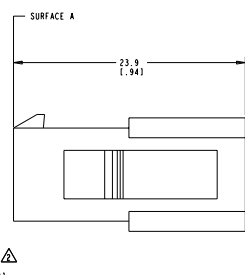
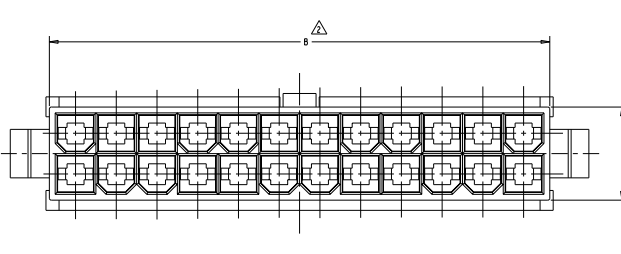


DATE REVISIONS TO IMPROVEMENTS
 RECEIVED FOR PUBLICATION
 ALL RIGHTS RESERVED

REV	DATE	DESCRIPTION	BY	CHK	APP
A1		REVISED PER ECO-11-004817			



RECOMMENDED CUT OUT
 FOR 2.00(.079) MAX. THICK PANEL



- ▲ NYLON, UL94V-2, NATURAL.
- ▲ DIMENSION TO BE CHECKED AT SURFACE A.
- 3. DIMENSIONS IN BRACKETS ARE IN INCHES.
- 4. MALE CONTACTS MUST BE INSERTED SO THAT THE TOP OF THE WIRE AND INSULATION CRIMPS ARE FACING THE SIDE OF THE HOUSING WITH THE LOCKING LATCH.
- 5. RECOMMENDED MAX. PANEL THICKNESS 2.00(.079).
- 6. PANEL MUST BE PUNCHED SO THAT THE HOUSING ENTERS THE PANEL IN THE SAME DIRECTION AS THE PUNCH.

52.312(.059)	51.612(.032)	52.0012(.047)	24	2-794550-4
48.111(.894)	47.411(.866)	47.8011(.862)	22	2-794550-2
43.911(.728)	43.211(.701)	43.6011(.717)	20	2-794550-0
39.711(.563)	39.11(.535)	39.6011(.551)	18	1-794550-8
35.511(.388)	34.811(.370)	35.2011(.386)	16	1-794550-6
31.311(.232)	30.611(.205)	31.0011(.220)	14	1-794550-4
27.111(.067)	26.411(.039)	26.8011(.055)	12	1-794550-2
22.91(.902)	22.21(.874)	22.601(.889)	10	1-794550-0
18.71(.736)	18.001(.709)	18.401(.724)	8	794550-8
14.51(.571)	13.81(.543)	14.201(.558)	6	794550-6
10.31(.406)	9.61(.378)	10.001(.394)	4	794550-4
6.11(.240)	5.41(.213)	5.801(.228)	2	794550-2

THIS DRAWING IS A CONTROLLED DOCUMENT.

DRAWING: METRIC
 PART: AMP-DUAC 19 POWER CONNECTOR
 MATERIAL: NYLON
 FINISH: NATURAL

CUSTOMER DRAWING
 STATE: CA
 CITY: FOLSOM
 ZIP: 95630
 PHONE: (916) 438-1000
 FAX: (916) 438-1001
 E-MAIL: SALES@METRIC.COM

METRIC
 100779 ©-794550
 4-11-11

