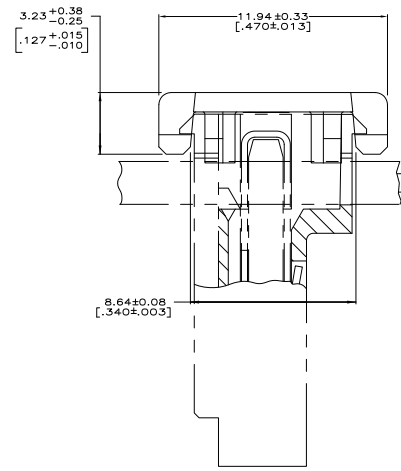
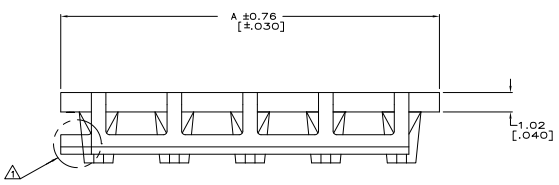
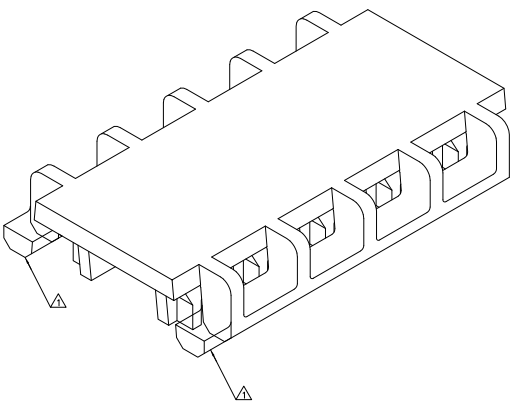


THIS DRAWING IS UNAPPROVED
 UNLESS OTHERWISE NOTED
 ALL WORK REQUIREMENTS

REV	DATE	DESCRIPTION	BY	CHK
CM	54			
F1		REVISED PER ECO-11-004820	11MMH11	RK HMR



△ PART MAY BE MOLDED TO DESIRED POSITION SIZE OR CUT TO DESIRED POSITION SIZE FROM A LARGER POSITION SIZE PART. WHEN PART IS CUT TO DESIRED POSITION SIZE PORTION OF FRONT LOCKING BAR WILL REMAIN ATTACHED.
 2. DIMENSIONS IN BRACKETS ARE IN INCHES.



24 CIRCUIT ASSEMBLIES	95.10	[3.744]	2-643071-4
23 CIRCUIT ASSEMBLIES	91.14	[3.588]	2-643071-3
22 CIRCUIT ASSEMBLIES	87.17	[3.432]	2-643071-2
21 CIRCUIT ASSEMBLIES	83.21	[3.276]	2-643071-1
20 CIRCUIT ASSEMBLIES	79.25	[3.120]	2-643071-0
19 CIRCUIT ASSEMBLIES	75.29	[2.964]	1-643071-9
18 CIRCUIT ASSEMBLIES	71.32	[2.808]	1-643071-8
17 CIRCUIT ASSEMBLIES	67.36	[2.652]	1-643071-7
16 CIRCUIT ASSEMBLIES	63.40	[2.496]	1-643071-6
15 CIRCUIT ASSEMBLIES	59.44	[2.340]	1-643071-5
14 CIRCUIT ASSEMBLIES	55.47	[2.184]	1-643071-4
13 CIRCUIT ASSEMBLIES	51.51	[2.028]	1-643071-3
12 CIRCUIT ASSEMBLIES	47.55	[1.872]	1-643071-2
11 CIRCUIT ASSEMBLIES	43.59	[1.716]	1-643071-1
10 CIRCUIT ASSEMBLIES	39.62	[1.560]	1-643071-0
9 CIRCUIT ASSEMBLIES	35.66	[1.404]	643071-9
8 CIRCUIT ASSEMBLIES	31.70	[1.248]	643071-8
7 CIRCUIT ASSEMBLIES	27.74	[1.092]	643071-7
6 CIRCUIT ASSEMBLIES	23.77	[0.936]	643071-6
5 CIRCUIT ASSEMBLIES	19.81	[0.780]	643071-5
4 CIRCUIT ASSEMBLIES	15.85	[0.624]	643071-4
3 CIRCUIT ASSEMBLIES	11.89	[0.468]	643071-3
2 CIRCUIT ASSEMBLIES	7.92	[0.312]	643071-2

USE OR VIA USE ASSEMBLIES AS LISTED

THIS DRAWING IS A CONTROLLED DOCUMENT		REV	DATE	BY	CHK
DIMENSIONS: mm (INCHES)		CM	54		
MATERIAL: MILGUL 66-2 WHITE					
CUSTOMER DRAWING					

TE Connectivity
 COVER, FEED-THRU, MOLDED, .095 MAX. O.D. WIRE, WTA-156
 PART NO. A
 REF: 00779
 DATE: 10/11