

4

3

2

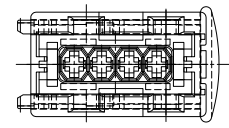
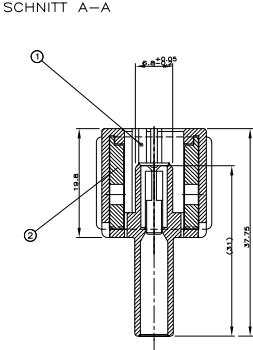
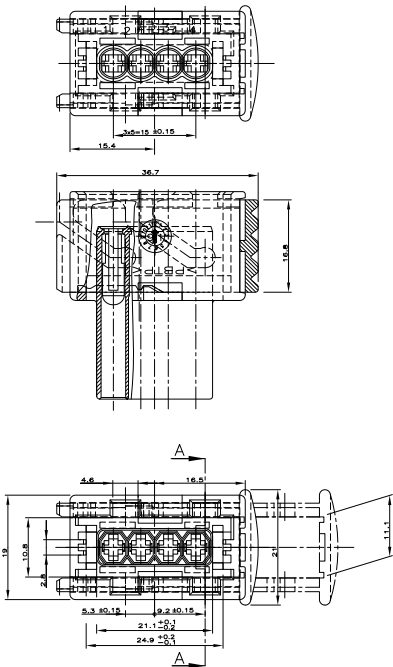
1

THIS DRAWING IS UNPUBLISHED. © Copyright - By -	RELEASED FOR PUBLICATION ALL RIGHTS RESERVED.	VERWENDET MIT 965261 963208	WAR. NR. 90-52125-20	LOC ---	DIST ---	REVISIONS		DATE	WIN	APD
				ÄNDERUNGEN DIE DEM TECH- NISCHEN FORTSCHRITT DIENEN, BEHALTEN WIR UNS VOR		F	LR	DESCRIPTION		
						C1		REVISED PER ECO-11-005150	07APR11	RK HMR

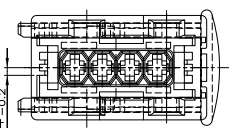
Bemerkung:

1 Zu verwendete Junior Power Timer Kontakte 0.5 - 1.0mm<sup>2</sup> AMP-Nr. 929 939 oder 927 770  
( USED JUNIOR POWER TIMER CONTACTS ) >1.0 - 2.5mm<sup>2</sup> AMP-Nr. 929 937 oder 927 766

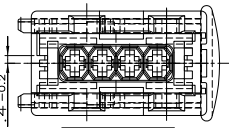
2 Zu verwendete Einzeladerabdichtung Isol.  $\phi$  1.2 - 2.1 AMP-Nr. 828 904  
( USED SCAT SEAL ) Isol.  $\phi$  2.2 - 3.0 AMP-Nr. 828 905



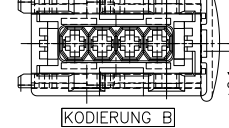
KODIERUNG N  
7-967059-1



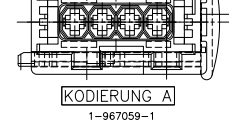
KODIERUNG D  
5-967059-1  
5-967059-2



KODIERUNG C  
3-967059-1



KODIERUNG B  
2-967059-1



KODIERUNG A  
1-967059-1

ARTIKEL-NR. REFPARTNUMMER	KODIERUNG	BEZUGS-NR. REFPARTNUMMER	POS.	STÜCK	BEZEICHNUNG EINZELST.	WERTSTOFF	GRUPPE	FINISCH
5-965261-1	N	7-967059-1	2	1	SCHIEBER	PERFORM	rot (RED)	
4-965261-2	D	5-967059-2	1	1	4 POL. J-P-T GEH.	PERFORM	weiß(WHITE)	
4-965261-1	D	5-967059-1	1	1	4 POL. J-P-T GEH.	PERFORM	rot (RED)	
3-965261-1	C	3-967059-1	2	1	SCHIEBER	PERFORM	rot (RED)	
2-965261-1	B	2-967059-1	1	1	4 POL. J-P-T GEH.	PERFORM	grün(GREEN)	
1-965261-1	A	1-967059-1	2	1	SCHIEBER	PERFORM	rot (RED)	
1-965261-1	A	1-967059-1	1	1	4 POL. J-P-T GEH.	PERFORM	rot (RED)	

ZEICHNUNG GÜLTIG AB		.....
THIS DRAWING IS A CONTROLLED DOCUMENT.		DIN SCHWAEGER 12.01.93
DIMENSIONS:		mm
TOLERANCES UNLESS OTHERWISE SPECIFIED:		
0 P.L.C.	$\pm$	
1 P.L.C.	$\pm$ 0.3 MM	
2 P.L.C.	$\pm$	
3 P.L.C.	$\pm$	
4 P.L.C.	$\pm$ 1.5°	
MATERIAL:		
FINISH:		

TE Connectivity		
4 POL. J-P-T Gehäuse ( 4 POS. J-P-T HSG. ASS'Y )		
SIZE	ONE CODE	DRAWING NO.
A2	00779	C-967059
CUSTOMER DRAWING		RESTRICTED TO
SCALE	SHEET	REV
5:1	1 of 1	C1