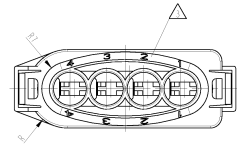
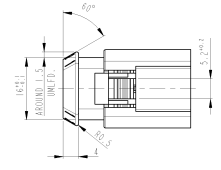
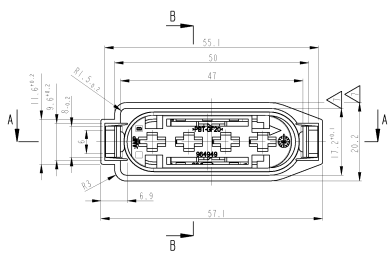
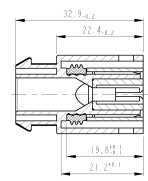
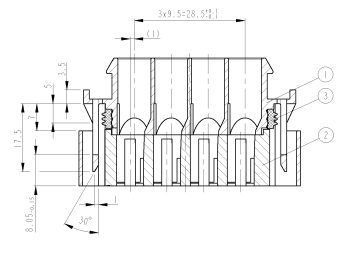
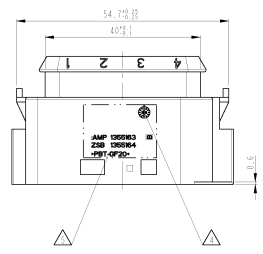


REV	DATE	DESCRIPTION	BY	CHK	APP
A1	-	REVISIONS			
1	1/10	REVISIONS			
2		ZEICHNUNG NEU ERSTELLEN			
3		POSITION DETECTOR, LOCKING LATCH ENABLITION			
4		100-18149-100-10000-1			



- NOTES
- DIN1451, PART4 W, CHARACTERS 1.2 RECEDE 0.15 FIELD RECEDE 0.0 OR CHARACTERS 1.2 REISED 0.15 FIELD RECEDE 0.2
 - ALL RADII EXCEPT AS NOTED R0.5
 - CONTACT CAVITY NUMBER: CHARACTERS 2.5 RECEDE 0.3
 - PRODUCTION-DATE WITH DATE INSERT Ø3
 - MATERIAL MARKING ACC. TO VDA 260
 - THE PART NO. 1355164 ASSEMBLED FOR EXAMPLE WITH CONTACT 969042-1 (1.5MM2 FLE) AND SEALING 1394511-1 WILL HAVE A SUITABLE MATING PART ACC. TO 114-18149-100
 - ALLOWED MARGAPE -0.5MM
 - BULK PACKAGED



- BEMERKUNGEN
- DIN1451, TEIL4 W, HOEHE 1.2 VERTIEFT 0.15 FELD VERTIEFT 0.0 ODER HOEHE 1.2 ERHABEN 0.15 FELD VERTIEFT 0.2
 - UNBEMASSTE RADIIEN R0.5
 - KONTAKTRUMMENNUMMER: SCHRIFTHOEH 2.5 VERTIEFT 0.3
 - PRODUKTIONSdatum MIT DATUMSUEHR Ø3
 - WERKSTOFF-NENNZEICHNUNG NACH VDA 260
 - DAS TEIL 1355164 WIRD Z. B. MIT DEM KONTAKT 969042-1 (1.5MM2 FLE) UND EINZELDICHTUNG 1394511-1 BESTUECKT AUF EIN GEGENSTUECK NACH 114-18149-100 GESTECKT
 - ZULASSIGER VERZUG -0.5MM
 - VERPACKT ALS SCHWETTOUT

PART NO	REV	MATERIAL	COLOR	DESCRIPTION	QTY	ITEM NO
1355164-1	B	WVO	ORANGE	SEALING, 4 POSITION, ...	1	3
		PBT-GF20	VIOLET	RECEPTACLE HOUSING, 4 POSITION, ...	1	2
		PBT-GF20	BLACK	COVER HOUSING, 4 POSITION, ...	1	1

REV	DATE	DESCRIPTION	BY	CHK	APP
1	01/20/99	AMP Receptacle Cover			
2	01/20/99	AMP Receptacle Cover			
3	01/20/99	AMP Receptacle Cover			