

4

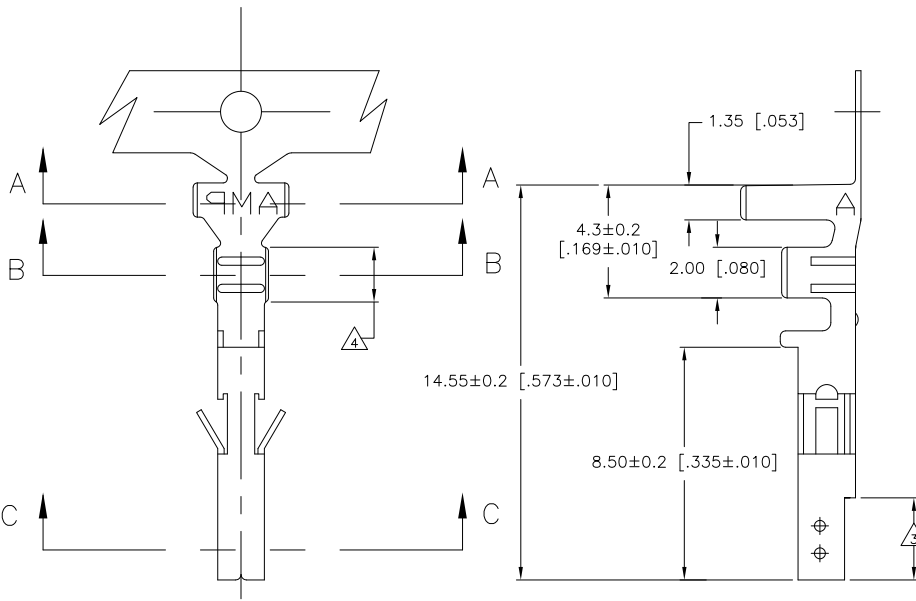
3

2

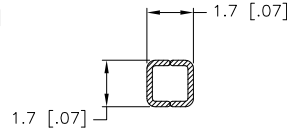
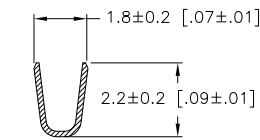
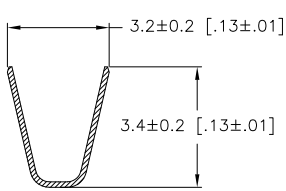
1

THIS DRAWING IS UNPUBLISHED. RELEASED FOR PUBLICATION. ALL RIGHTS RESERVED.

| LOC | DIST | REVISIONS | | |
|-----|------|---------------------------|---------|--------|
| F | LNK | DESCRIPTION | DATE | BY |
| CM | 00 | | | |
| | F4 | REVISED PER ECO-11-004820 | 11MAR11 | RK HMR |



- 1 WIRE RANGE: 0.13-0.32mm² (26-22 AWG).
- 2 INSULATION RANGE: 1.20-1.75 DIA.
- 3 FINISH: 0.76 MIN GOLD OVER 1.27μm MIN NICKEL REQUIRED ON INNER SURFACE, PERMITTED ON OUTER SURFACE.
- 4 FINISH: 2.54μm MIN PRE-TIN ON ALL SURFACES IN THIS AREA.
- 5 FINISH: 2.54μm MINIMUM PRE-TIN ALL OVER.



SECTION B-B

SECTION C-C

SECTION A-A

| | | | | |
|---------|---|---|------------|----------|
| GOLD | 3 | 4 | PHOS. BRZ. | 794958-4 |
| PRE-TIN | 5 | | PHOS. BRZ. | 794958-3 |
| GOLD | 3 | 4 | BRASS | 794958-2 |
| PRE-TIN | 5 | | BRASS | 794958-1 |
| FINISH: | | | MATERIAL: | PART NO. |

THIS DRAWING IS A CONTROLLED DOCUMENT.

| | | | | |
|-------------|-------------|-------------------|----------|-------------|
| DIMENSIONS: | mm [INCHES] | DRW: | S. HAMM | 10-SEP-2001 |
| | | CHK: | D. COLEY | 10-SEP-2001 |
| | | APP: | D. COLEY | |
| | | PROJ: | | |
| | | NAME: | | |
| | | APPLICATION SPEC: | | |
| | | WEIGHT: | | |
| | | CUSTOMER DRAWING | | |
| | | SIZE: | A2 | 00779 |
| | | DATE: | C=794958 | |
| | | SCALE: | 10:1 | |
| | | SHEET: | 1 of 1 | |
| | | REV: | F4 | |

TE Connectivity
TERMINAL SOCKET VAL-U-LOK(TM)

METRIC

1471-9 (3/11)

794958

A