

4

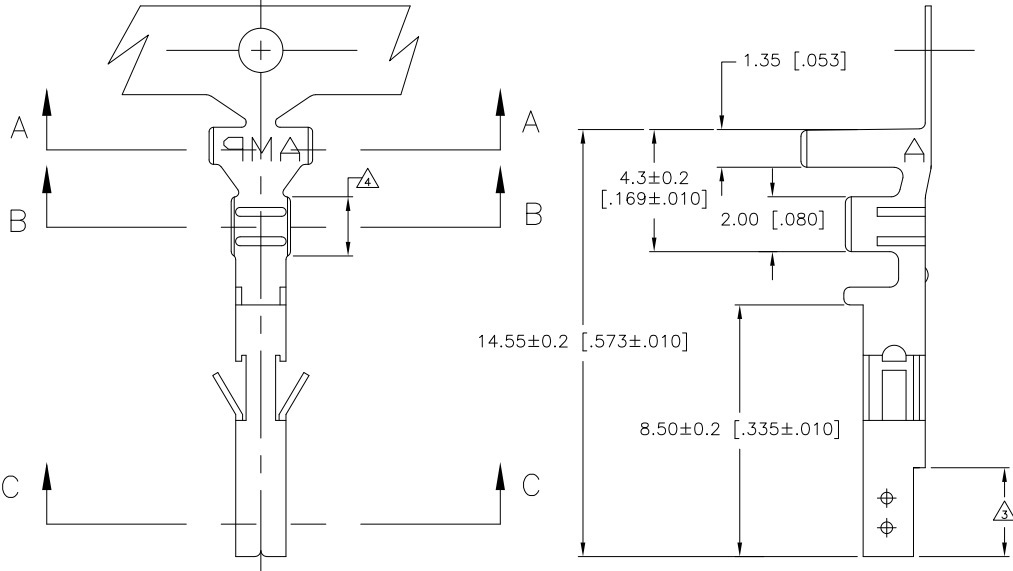
3

2

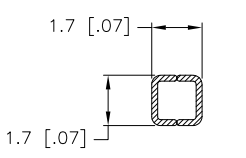
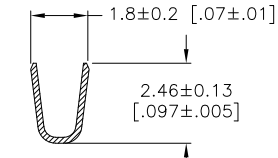
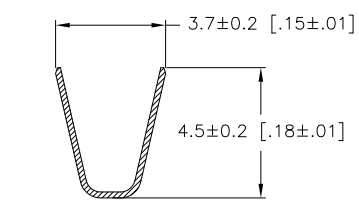
1

THIS DRAWING IS UNPUBLISHED. RELEASED FOR PUBLICATION. ALL RIGHTS RESERVED.

LOC	DIST	REVISIONS					
CM	00	P	LTR	DESCRIPTION	DATE	BY	APPD
		H3		REVISED PER ECO-11-004587	11MAR11	RK	HMR



- 1 WIRE RANGE: 0.2-0.82mm<sup>2</sup> (24-18 AWG).
- 2 INSULATION RANGE: 1.50 - 3.10 DIA.
- 3 FINISH: 0.76μm MIN GOLD OVER 1.27μm MIN NICKEL REQUIRED ON INNER SURFACE, PERMITTED ON OUTER SURFACE.
- 4 FINISH: 2.54μm MIN PRE-TIN ON ALL SURFACES IN THIS AREA.
- 5 FINISH: 2.54μm MINIMUM PRE-TIN ALL OVER.



GOLD	3 4	PHOS. BRZ.	794956-4
PRE-TIN	5	PHOS. BRZ.	794956-3
GOLD	3 4	BRASS	794956-2
PRE-TIN	5	BRASS	794956-1
FINISH:		MATERIAL:	PART NO.

SECTION A-A

SECTION B-B

SECTION C-C

METRIC

THIS DRAWING IS A CONTROLLED DOCUMENT.

DR: S. HAMM	10-SEP-2001	TE Connectivity
CHK: D. COLEY	10-SEP-2001	
APP: D. COLEY	10-SEP-2001	
PRODUCT SPEC:		
APPLICATION SPEC:		
WEIGHT:		
FINISH:		
CUSTOMER DRAWING	SCALE: NTS	SHEET: 1 of 1

SIZE: A2  
CAGE CODE: 00779  
DRAWING NO: 794956  
RESTRICTED TO: H3

1471-9 (3/11)

794956

A