

4

3

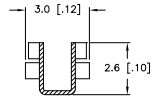
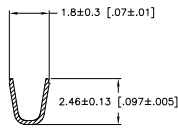
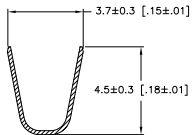
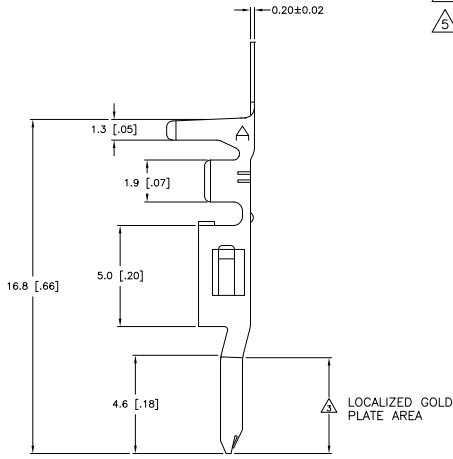
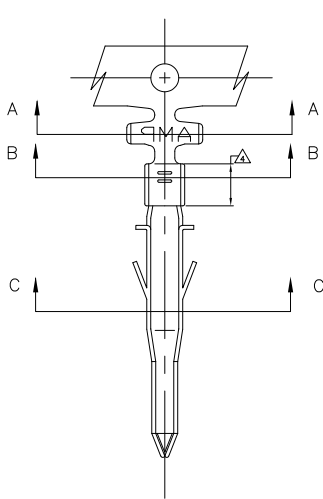
2

1

THIS DRAWING IS UNPUBLISHED. RELEASED FOR PUBLICATION. ALL RIGHTS RESERVED.

LOC	DIST	REVISIONS		
F	LNK	DESCRIPTION	DATE	BY
CM	00			
	H2	REVISED PER ECO-11-004820	11MAR11	RK HMR

- 1 WIRE RANGE: 0.2-0.82mm² (24-18 AWG)
- 2 INSULATION RANGE: 1.50 - 3.10 DIA.
- 3 FINISH: 0.76μm MINIMUM GOLD IN LOCALIZED GOLD PLATE AREA OVER 1.27μm MINIMUM NICKEL.
- 4 FINISH: 2.54μm MINIMUM PRE-TIN IN LOCALIZED TIN PLATE AREA.
- 5 FINISH: 2.54μm MINIMUM PRE-TIN ALL OVER.



SECTION A-A

SECTION B-B

SECTION C-C

GOLD Δ 3 Δ 4	PHOS. BRZ.	794955-4
PRE-TIN Δ 5	PHOS. BRZ.	794955-3
GOLD Δ 3 Δ 4	BRASS	794955-2
PRE-TIN Δ 5	BRASS	794955-1
FINISH	MATERIAL	PART NO.

METRIC

DIMENSIONS		TOLERANCES UNLESS OTHERWISE SPECIFIED		APPROVED		TE Connectivity	
mm	[INCHES]	PLC	PLC	DATE	NAME	SIZE	RESTRICTED TO
		0	± 0.25 [0.010]	07-SEP-2001	S. HAMM	A2	
		1	± 0.15 [0.006]	07-SEP-2001	D. COLEY	C=	
		2	± 0.050 [0.0020]	07-SEP-2001	D. COLEY		
		3	± 0.050 [0.0020]				
		4	± 0.050 [0.0020]				
		ANGLES	±				
		FINISH	±				
MATERIAL				APPLICATION SPEC		CUSTOMER DRAWING	
FINISH				WEIGHT		SCALE 10:1 SHEET 1 of 1 REV H2	