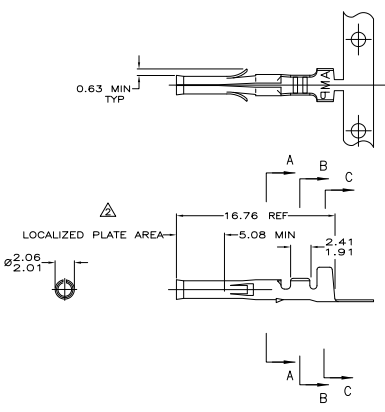
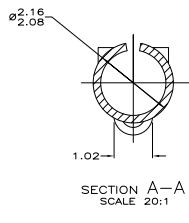
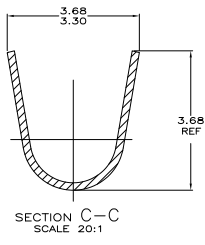
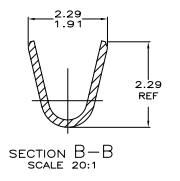


THE DRAWING IS UNLESS OTHERWISE SPECIFIED TO BE IN METRIC UNITS
 REVISIONS FOR PURCHASER: ALL RIGHTS RESERVED

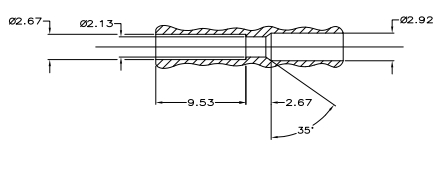
REV	DATE	DESCRIPTION	BY	CHK
00				
S1		REVISED PER ECO-11-004620	11MM11	RK HMR



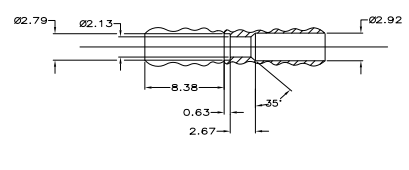
- △ 0.0008 MIN GOLD INSIDE RECEPTACLE IN LOCALIZED PLATE AREA OVER 0.0008 MIN NICKEL.
- 3. EITHER CAVITY WILL ACCEPT RECEPTACLE 350628,640392 OR PIN 350629,640391.
- △ REELED ON PLASTIC REELS.

IN	MM
.660	16.76
.375	9.53
.330	8.38
.200	5.08
.145	3.68
.130	3.30
.115	2.92
.110	2.79
.105	2.67
.095	2.41
.090	2.29
.085	2.16
.084	2.13
.082	2.08
.081	2.06
.079	2.01
.075	1.91
.050	1.27
.040	1.02
.025	0.63
.008	0.20
.005	0.13
0.00030	0.0008
IN	MM

CONVERSION TABLE



TYPICAL RECEPTACLE CAVITY SECTION REFERENCE



TYPICAL PLUG CAVITY SECTION REFERENCE

FINISH	MATERIAL	INSULATION	DIAMETER	WIRE RANGE	PART NO
△ PRE-TIN	0.20 BRASS		1.27-2.79	24-18	350628-8
△	0.20 PH.BRZ.		1.27-2.79	24-18	350628-6
△	0.20 BRASS		1.27-2.79	24-18	350628-5
PRE-TIN	0.20 PH.BRZ.		1.27-2.79	24-18	350628-2
PRE-TIN	0.20 BRASS		1.27-2.79	24-18	350628-1



THIS DRAWING IS A CONTROLLED DOCUMENT

TE Connectivity

062 SOCKET COMMERCIAL PIN & SOCKET

007790-350628

CUSTOMER DRAWING