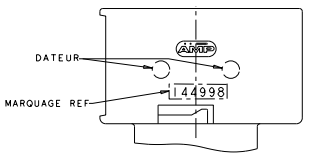
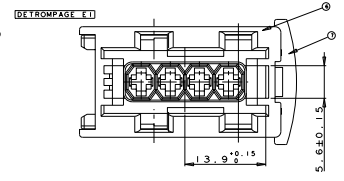
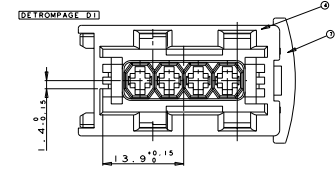
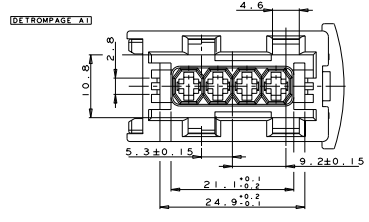
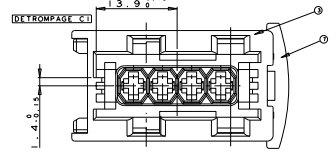
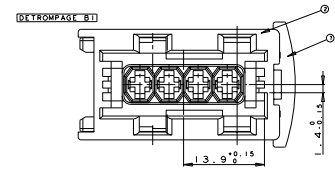
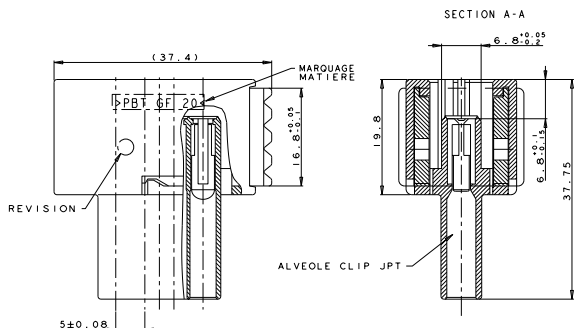
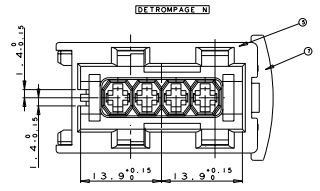
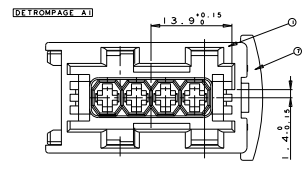
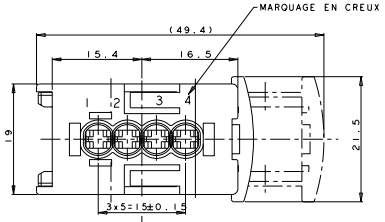


REVISEURS		DATE	DESIGN	APPR
A1	REVISED PER ECO-11-005150			



144998-6	7	ETRIER	PBT 202 CV	ROUGE
BOITIER E1	6	PORTE-CLIP ETANCHE 4 VOIES JPT	PBT 202 CV	VERT
144998-5	7	ETRIER	PBT 202 CV	ROUGE
BOITIER N	5	PORTE-CLIP ETANCHE 4 VOIES JPT	PBT 202 CV	BLANC
144998-4	7	ETRIER	PBT 202 CV	ROUGE
BOITIER D1	4	PORTE-CLIP ETANCHE 4 VOIES JPT	PBT 202 CV	MARRON
144998-3	7	ETRIER	PBT 202 CV	ROUGE
BOITIER C1	3	PORTE-CLIP ETANCHE 4 VOIES JPT	PBT 202 CV	BLEU
144998-2	7	ETRIER	PBT 202 CV	ROUGE
BOITIER B1	2	PORTE-CLIP ETANCHE 4 VOIES JPT	PBT 202 CV	GRIS
144998-1	7	ETRIER	PBT 202 CV	ROUGE
BOITIER A1	1	PORTE-CLIP ETANCHE 4 VOIES JPT	PBT 202 CV	NOIR
REFERENCE TE CONNECTIVITY	COMPOSANT	DESIGNATION	MATIERE	COULEUR

THIS DRAWING IS A CONTROLLED DOCUMENT. **TE Connectivity**
 PORTES CLIPS ETANCHE 4 VOIES JPT
 00779 © 144998
 CUSTOMER DRAWING / PLAN CLIENT