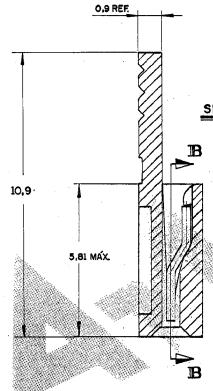
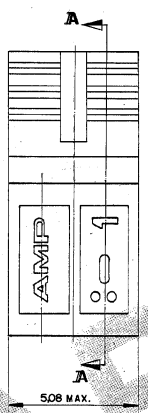


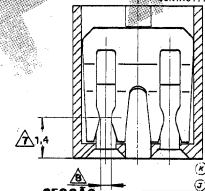
C881545

DO NOT SCALE
DIMENSIONS IN mm. METRIC 3rd ANGLE PROJECTION

ATENÇÃO
Este desenho esta sob o controle das especificações nos 102-23 e 102-55. Toda e qualquer alteração, antes de ser processada, deverá ser comunicada aos clientes envolvidos, através dos procedimentos atuais.
Ver pasta "Notificação ao Cliente"



- SECCÃO A-A
- MATERIAL: HOUSING: TERMOPLÁSTICO C/ FIBRA DE VIDRO V-D COR: PRETO
CONTACT: BRONZE FOSFOROSO
 - MATERIAL: HOUSING: TERMOPLÁSTICO WITH GLASS FIBER V-D COLOR:BLACK
CONTACT: PHOSPHOROUS BRONZE
 - MATERIAL: HOUSING: TERMOPLÁSTICO C/ FIBRA DE VIDRO HB COR:NATURAL
CONTACT: BRONZE FOSFOROSO
 - MATERIAL: HOUSING: TERMOPLÁSTICO WITH GLASS FIBER HB COLOR:NATURAL
CONTACT: PHOSPHOROUS BRONZE
 - 0,38 µm. MIN. OURO NA ÁREA DE CONTATO, SOBRE BANHO 0,76 µm NIQUEL
0,38 µm. MIN. GOLD ON CONTACT AREA, 0,76 µm NIQUEL UNDERPLATING
 - 0,76 µm. MIN. OURO NA ÁREA DE CONTATO, SOBRE BANHO 0,76 µm NIQUEL
0,76 µm. MIN. GOLD ON CONTACT AREA, 0,76 µm NIQUEL UNDERPLATING
 - 1,27 µm. MIN. OURO NA ÁREA DE CONTATO, SOBRE BANHO 0,76 µm NIQUEL
1,27 µm. MIN. GOLD ON CONTACT AREA, 0,76 µm NIQUEL UNDERPLATING
 - ESTANHO/SOBRE NIQUEL
FIN OVER NICKEL
 - PONTO DE CONTATO // MEDIDA DA CAMADA DE OURO
CONTACT POINT FOR GOLD PLATING MEASUREMENT
 - ACEITA R1HO QUILADO 0,64 x 0,64 OU REDONDO Ø 0,64
ALLOW SQUARE PIN 2,54 x 0,64 OR ROUND Ø 0,64
 - MATERIAL: HOUSING: TERMOPLÁSTICO C/ 15% DE FIBRA DE VIDRO, V2, COR VERMELHO(PADRÃO DE COR: CONTACT: BRONZE FOSFOROSO
MATERIAL: HOUSING: TERMOPLÁSTIC WITH 15% GLASS FIBER, V2, COLOR RED (STAND COLOR: RAL 3000) CONTACT: PHOSPHOROUS BRONZE.



V2, COLOR GREEN (AMP A6484)

- 10 SIMILAR DO P/N 881545-2, PORÉM EM EMBALAGENS C/ 2.000
PEÇAS/SACO PLÁSTICO.
SIMILAR OF P/N 881545-2 BUT IN PACKAGES W/ 2.000 PARTS/ PLASTIC BAG.
- 11 MATERIAL HOUSING: TERMOPLÁSTICO COM 15% FIBRA DE VIDRO, V2, COR AMARELO (RAL 1016)
CONTACT: BRONZE FOSFOROSO
MATERIAL: HOUSING: TERMOPLÁSTIC 15% GLASS FIBER V2, COLOR YELLOW (RAL 1016)
CONTACT: PHOSPHOROUS BRONZE.
- 12 MATERIAL HOUSING TERMOPLÁSTICO COM 15% FIBRA DE VIDRO, V2, COR VERDE (AMP A6484) CONTACT: BRONZE FOSFOROSO
MATERIAL HOUSING THERMOPLASTIC 15% GLASS FIBER, V2, COLOR GREEN (AMP A6484) CONTACT: PHOSPHOROUS BRONZE.
- 13 OBSOLETE PARTS: OBSOLETE CIS STREAMLINING PER D.RENAUD/D.SINISI

4-	-2		
4-	-1		
3-	-1		
2-	-4		
2-	-5		
2-	-2		
2-	-1		
2-	-9		
2-	-7		
2-	-6		
2-	-5		
2-	-3		
2-	-2		
OTHER TREATMENT	FINISH	MATERIAL	PART NUMBER
			881545-1

CUSTOMER DWG for REFERENCE ONLY

TOLERANCES UNLESS OTHERWISE STATED DEC. 20.8 ANGLES 2X		THIS DRAWING IS UNPUBLISHED & UNCLASSIFIED FOR PUBLICATION						
REV	ECO11-023509	MC	WLS	08/01/88	CHK	100	DATE	05/01/88
REVISED PER	ECO11-085130	RK	MMR	08/01/88	REV	100	DATE	05/01/88
REV	ECO11-085130	DR	DKR	DATE	REV	100	DATE	05/01/88
DESCRIPTION		AMP SHUNT		REV SHEET		REV SHEET		
A2		C 881545		K3		1 of 2		



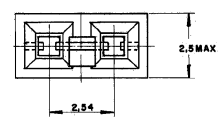
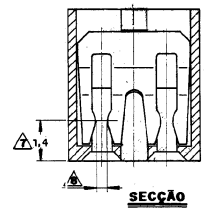
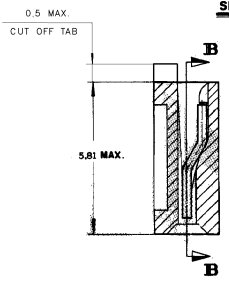
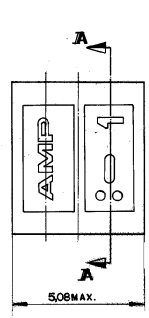
DESCRIPTION	AMP SHUNT
REV SHEET	REV SHEET
A2	C 881545
K3	1 of 2

C 881545

DO NOT SCALE
DIMENSIONS IN mm.

METRIC

3rd ANGLE PROJECTION



OBSOLETE	△			2	0
	△			2	7
	△			2	6
				2	881545
OBSOLETE	△			1	0
	△			1	7
	△			1	6
	△			1	5
	△			1	4
	△			1	3
	△			1	2
	△			1	881545
	△			1	1

OTHER TREATMENT	FINISH	MATERIAL	PART NUMBER
CUSTOMER DWG for REFERENCE ONLY			
THIS DRAWING IS UNPUBLISHED. RELEASED FOR PUBLICATION			
TOLERANCES UNLESS OTHERWISE STATED DEC. 2004 ANGLES 5°		INS. DIM. RANGE	WIRE RANGE
DR CHK. APP. DATE		SCALE	
SEE SHEET 1 OF 2		STE TE Connectivity	
		DESCRIPTION: AMP SHUNT	
		LOW PROFILE CONNECTOR ASSY	
REV. NO. A2		REV. SHEET 2 OF 2	
PART NO. C 881545			