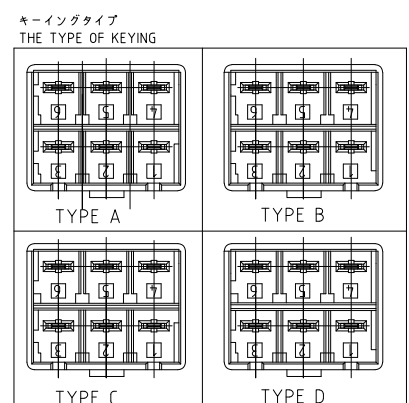
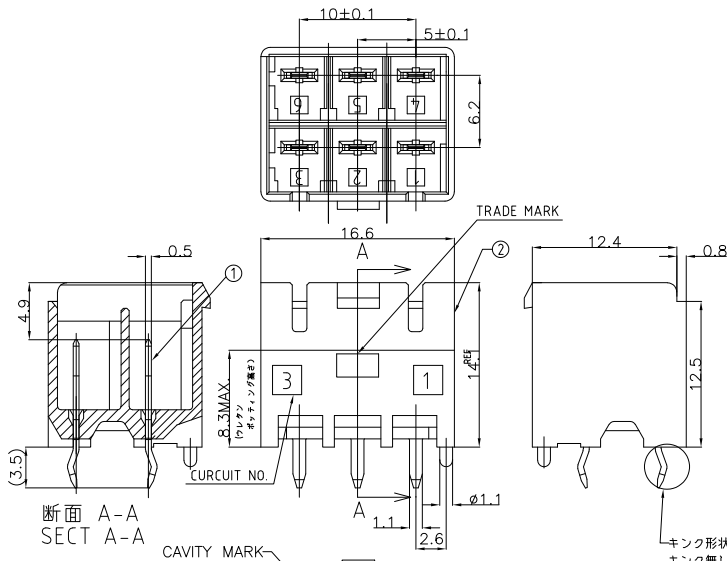


THIS DRAWING IS UNPUBLISHED. RELEASED FOR PUBLICATION
 © COPYRIGHT - By - ALL RIGHTS RESERVED.

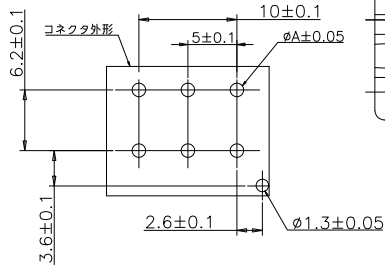
LOC	DIST	REVISIONS					
		P	LTR	DESCRIPTION	DATE	DWN	APVD
J	-	E2		REVISED PER ECO-11-005030	11MAR11	RK	HMR



キンク形状:
キンク無し形状は本ライン部がストレートである。
KINK SHAPE:
WITHOUT KINK IS STRAIGHT SHAPE OF TINE.

NO.	名称(NAME)	材料(MATERIAL)
②	ヘッダーハウジング (HEADER HOUSING)	6/6ナイロングラス強化 (6/6 NYLON GLASS FILLED)
①	タブ(TAB)	錫めっき銅合金 (COPPER ALLOY TIN PLATED)

Part No.	キンク有/無 (WITH/WITHOUT KINK)	キーイングタイプ (TYPE OF KEYING)	色 (Color)	極数 (Pos)	型番 (PART NO.)
3-1376393-4	WITHOUT KINK	TYPE D	黄色 (YELLOW)	6Pos	8-1376387-4
2-1376393-3	WITHOUT KINK	TYPE C	青色 (BLUE)	6Pos	7-1376387-3
1-1376393-2	WITHOUT KINK	TYPE B	赤色 (RED)	6Pos	6-1376387-2
1376393-1	WITHOUT KINK	TYPE A	自然色 (NATURAL)	6Pos	5-1376387-1
3-1376393-4	WITH KINK	TYPE D	黄色 (YELLOW)	6Pos	3-1376387-4
2-1376393-3	WITH KINK	TYPE C	青色 (BLUE)	6Pos	2-1376387-3
1-1376393-2	WITH KINK	TYPE B	赤色 (RED)	6Pos	1-1376387-2
1376393-1	WITH KINK	TYPE A	自然色 (NATURAL)	6Pos	1376387-1



パンチ加工	1.25
フリル加工	1.4
A 寸法	

注) ① 取付穴寸法
② 適応基板厚: 1.6 t
③ かん合相手製品型番:
プラグハウジング: SEE TABLE

(NOTES)
① RECOMMENDED P.C.B. LAY OUT
② APPLICABLE P.C.B. THICKNESS: 1.6
③ MATING CONN. P/N
PLUG HOUSING: SEE TABLE

プリント基板推奨穴加工寸法

THIS DRAWING IS A CONTROLLED DOCUMENT.

DIMENSIONS:	TOLERANCES UNLESS OTHERWISE SPECIFIED:
単位: 寸 (mm)	公差
0 PLZ	± 0.2
1 P/C	±
2 P/C	±
3 P/C	±
4 P/L	± 1°
ANGLES	
MATERIAL	FINISH
材料	仕上
SEE TABLE	SEE TABLE

20MAR2003

DWN: A.OISHI
CHK: Y.KASHIWA
APVD: Y.KASHIWA

製品番号: 108-5699
取付適用規格: 114-5292

TE Connectivity
5.0 POWER KEY CONNECTOR
6P HEADER ASSEMBLY
(2ROW)

SIZE: A3 CAGE CODE: 00779 DRAWING NO.: 1376387

CUSTOMER DRAWING SCALE: 3:1 SHEET: 1 OF 1 REV: E2