

4

3

2

1

THIS DRAWING IS UNPUBLISHED.

RELEASED FOR PUBLICATION

-

COPYRIGHT -

ALL RIGHTS RESERVED.

LOC DIST

J ZDI

REVISIONS

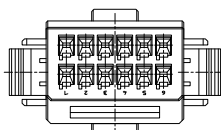
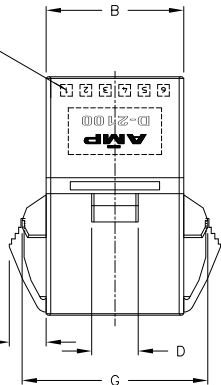
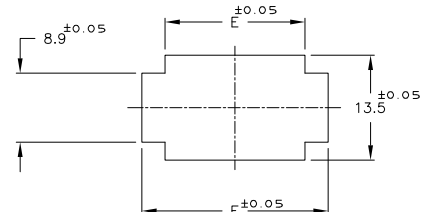
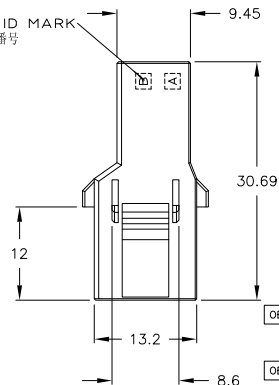
REV	DESCRIPTION	DATE	DWN	APVD
A3	REVISED PER ECO-11-005030	21MAR11	RK	HMR

注記

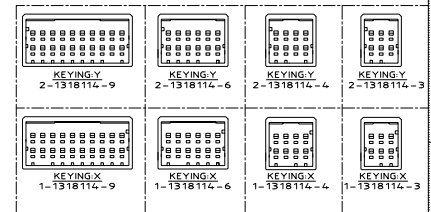
- △ 材料: ハウジング: ガラス入り熱可塑性ポリエスチル (94V-0), 色: 黒
 2 金属パネルの場合、コネクタ取付け方向をパンチ加工方向にしてください。
 3 プラスチックパネルの場合、穴端部にRなき様ご配慮ください。
 △ ハウジング全面にテフロン塗装の事。

NOTES

- △ MATERIAL: HOUSING: GLASS FILLED THERMO PLASTIC
 POLYESTER (94V-0), COLOR: BLACK
 2 INSERT CONN FROM PRESS DIRECTION SIDE FOR METAL PANEL.
 3 EDGE OF THICKNESS WAY MUST NOT ROUND FOR MOLDED PANEL.
 △ TO COAT ALL SURFACE OF HOUSING WITH TEFLON

CIRCUIT NO.
回路番号ROW ID MARK
列番号

パネル加工推奨寸法図
 RECOMMENDED PANEL LAYOUT
 (適用パネル厚 0.8-2.0)
 (APPLICABLE PANEL THICKNESS: 0.8-2.0)



OBSOLETE	△	22.5	27.7	11.5	6	28	34.0	33.88	9	20	5	1318114-9
	-	22.5	27.7	11.5	6	28	34.0	33.88	9	20	2	1318114-9
OBSOLETE	△	12.5	17.7	11.5	6	18	24.0	23.88	5	12	5	1318114-6
	-	12.5	17.7	11.5	6	18	24.0	23.88	5	12	2	1318114-6
OBSOLETE	△	7.5	12.7	4	4	13	19.0	18.88	3	8	5	1318114-4
	-	7.5	12.7	4	4	13	19.0	18.88	3	8	2	1318114-4
OBSOLETE	△	5	10.2	4	4	10.5	16.5	16.38	2	6	5	1318114-3
	-	5	10.2	4	4	10.5	16.5	16.38	2	6	2	1318114-3
FINISH	A	B	C	D	E	F	G	N	POS	P/N		

THIS DRAWING IS A CONTROLLED DOCUMENT FOR AMP INCORPORATED DOWN
IT IS SUBJECT TO CHANGE AND THE CONTROLLING ENGINEERING
ORGANIZATION SHOULD BE CONTACTED FOR THE LATEST REVISION.

DIMENSIONS: 単位: mm

TOLERANCES UNLESS OTHERWISE SPECIFIED

10: ±0.3
30: ±0.35
100: ±0.4
ANGLE: ±3°

MATERIAL

FINISH

PRODUCT SPEC

APPLICATION SPEC

WEIGHT

CUSTOMER DRAWING

CHK K. IKEDA 7/DEC/98

APVD N. MATSUBARA 7/DEC/98

NAME I. HASEGAWA

108-5619

114-5258

SIZE

CAGE CODE

DRAWING NO

A3 00779

SCALE

2-1

SHEET

1 OF 1

REV

A3



TE Connectivity

2列タブハウジング

パネルマウントタイプ

DOUBLE ROW TAB HSG (PANEL MOUNT)
DYNAMIC D-2100D

RESTRICTED TO

C=1318114

SCALE 2-1

SHEET 1 OF 1

REV A3

顧客用図面

AMP1470-19 REV 10/93