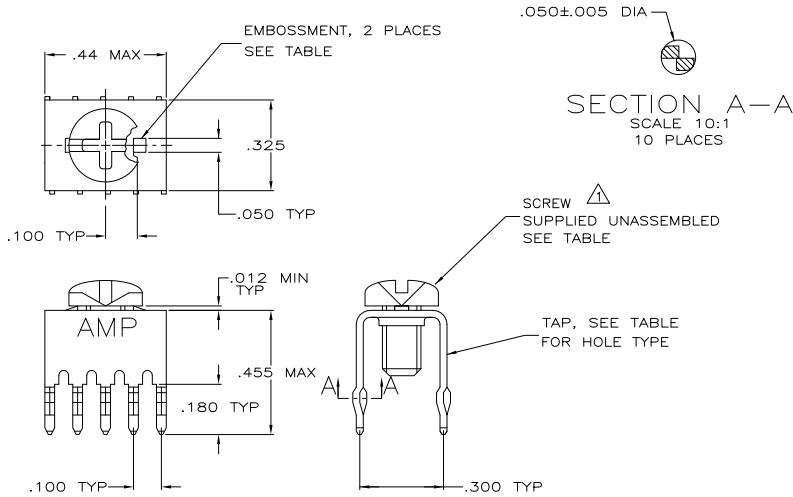


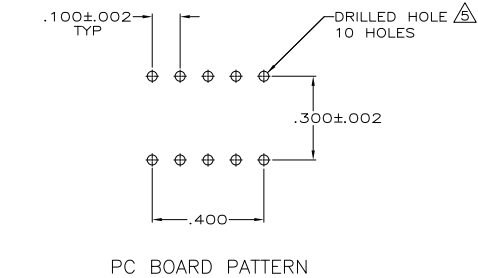
THIS DRAWING IS UNPUBLISHED. RELEASED FOR PUBLICATION. ALL RIGHTS RESERVED.

LOC		DIBT		REVISIONS			
P	LTR	DESCRIPTION	DATE	BY	APPD		
AA	00						
	C1	REVISED PER ECO-11-004835	11MAR11	RK	HMR		



SECTION A-A
SCALE 10:1
10 PLACES

- 1 TO PREVENT THREAD STRIPPING, SCREW TORQUE SHOULD NOT EXCEED 9 IN LBS.
- 2 TAP HOLE IS 6-32UNC-2B, TWO MIN THREADS.
- 3 TAP HOLE IS M4 X 0.7, TWO MIN THREADS.
- 4 TAP: .00020-.000120 MATTE TIN OVER .000050 NICKEL.
- 5 REFERENCE APPLICATION SPECIFICATION 114-11000 FOR DRILL HOLE SIZES AND FINISHES.



FINISH	HOLE TYPE	SCREW	EMBOSSMENT	PART NUMBER
4	3	NO	YES	1-5055558-1
4	2	NO	NO	5055558-7
4	2	993879-1	YES	5055558-4
4	2	NO	YES	5055558-3

THIS DRAWING IS A CONTROLLED DOCUMENT.		BY J. ALCORTA 05-04-05	TE Connectivity	
DIMENSIONS: INCHES		CHK D. DOCKING 05-04-05	TE	
MATERIAL: COPPER ALLOY 72S.		APPD A. FRANTUM 05-04-05	TAP, POWER DISTRIBUTION	
FINISH: 1		DESIGNER S. FLICKINGER	DRAWING NO. 00779	
OTHER FINISHES: 2, 3, 4, 5		PRODUCT SPEC: 108-11030	CAGE CODE: C-5055558	
PLC 1: 2, 3, 4, 5		APPLICATION SPEC: 114-11000	SCALE: 4:1	
PLC 2: 2, 3, 4, 5		WEIGHT: -	SHEET: 1 of 1	
PLC 3: 2, 3, 4, 5		REVISIONS: -	REV: C1	
PLC 4: 2, 3, 4, 5		CUSTOMER DRAWING		