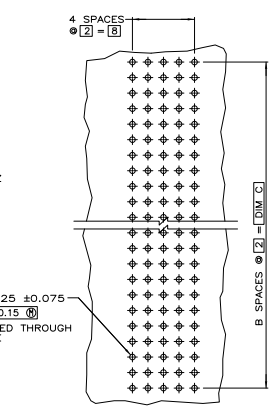
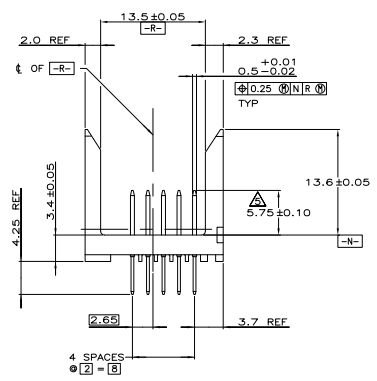
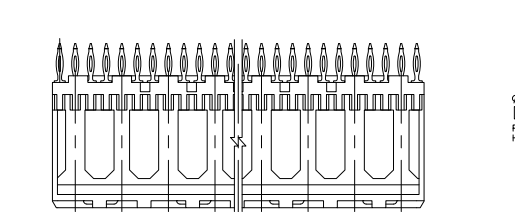
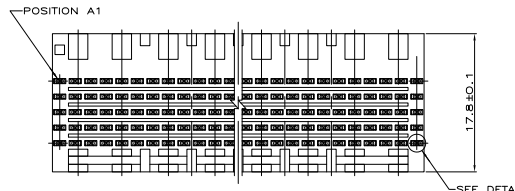
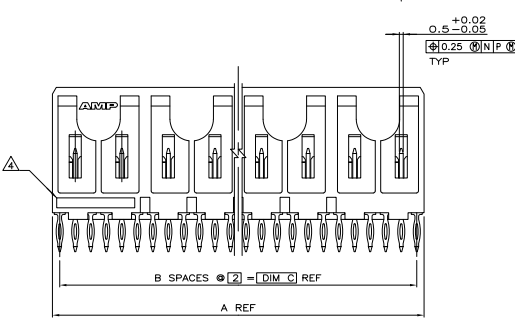
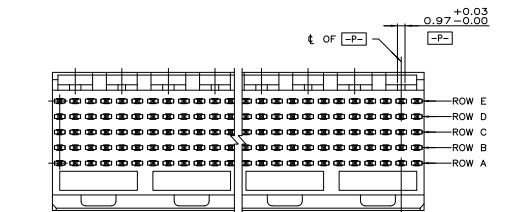
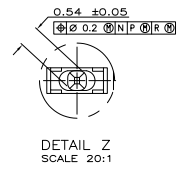


REV	DATE	DESCRIPTION	BY	CHK	APP
AD	47				
N		REV PER EC 0512-0414-03	20FEB04	NK	RW
N1		REVISED PER ECO-09-020689	26AUG09	KK	AEG



- △ HOUSING MATERIAL: LIQUID CRYSTAL POLYMER
COLOR: NATURAL.
- △ CONTACT MATERIAL: PHOSPHOR BRONZE
- △ CONTACT FINISH:
UNDERPLATE (ENTIRE CONTACT):
0.00127 MIN NICKEL
ON MATING SURFACES:
CONFORMS TO ALL TESTING SPECIFIED FOR TELCORDIA
UNCONTROLLED ENVIRONMENT.
ON LEADS
0.0006 MIN TIN-LEAD OVER UNDERPLATE.
LUBRICATION (ENTIRE CONTACT):
SURFACE CONDITIONER PER AMP SPEC 112-1002 AFTER PLATING.
- △ PART MARKING LOCATED APPROXIMATELY AS SHOWN.
- △ DIMENSION APPLIES WHEN SEATED ON PRINTED CIRCUIT BOARD.
- △ OBSOLETE PARTS: OBSOLETE CIS STREAMLINING PER D.RENAUD/D.SINISI



REV	DATE	DESCRIPTION	BY	CHK	APP	
△ OBSOLETE	260	1.30	1.31.88	△	3.30	1-223016-1
△ OBSOLETE	118	59	119.88	△	300	1-223016-0
△ OBSOLETE	106	53	107.88	△	270	223016-9
	94	47	95.88	△	240	223016-8
	82	41	83.88	△	210	223016-7
△ OBSOLETE	140	70	71.88	△	180	223016-6
	58	29	59.88	△	150	223016-5
	46	23	47.88	△	120	223016-4
	34	17	35.88	△	90	223016-3
	22	11	23.88	△	60	223016-2
	10	5	11.88	△	30	223016-1

THIS DRAWING IS A CONTROLLED DOCUMENT. REVISED BY: TYS ELECTRONICS CORPORATION. HARRISBURG, PA 17105-3608

ASSEMBLY, PIN, SIGNAL, VERTICAL, Z-PACK, 2mm FB, 5 ROW, PRESS FIT LEADS

DATE: 00779 DATE: 4.1 SHEET: 1 OF 1

CUSTOMER DRAWING