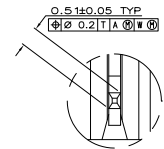
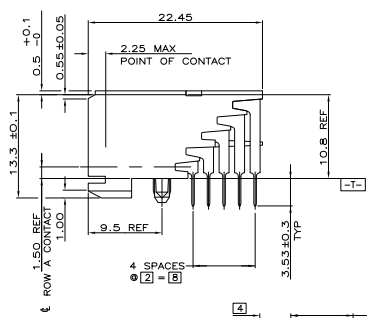
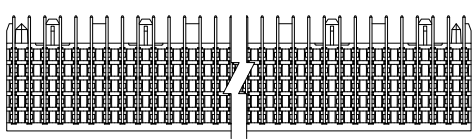
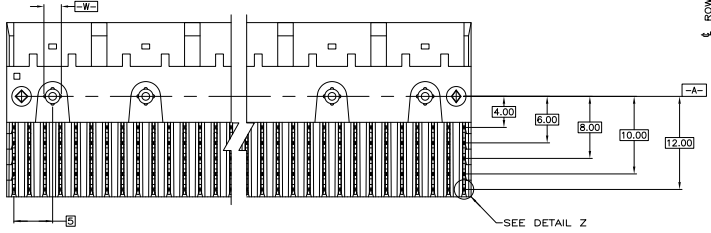
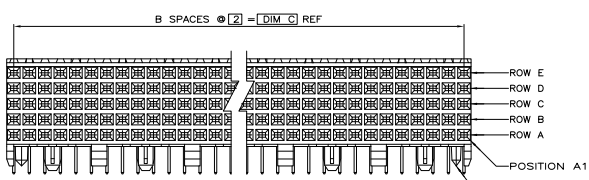
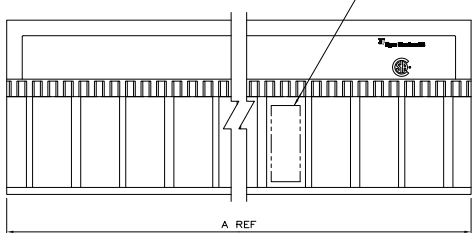
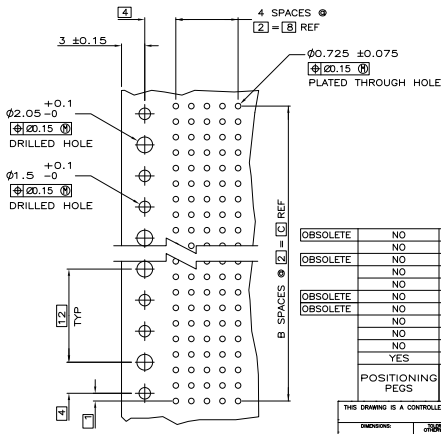


| REV | DATE | DESCRIPTION | BY | CHK | APP |
|-------|------|--------------------------|----|-----|----------------|
| AD 00 | | | | | |
| M1 | | REVISED PER ECO-08-00065 | | | DH AS |
| M2 | | REVISED PER ECO-09-00089 | | | 25AUG09 KK AEG |



DETAIL Z
SCALE 20:1



RECOMMENDED CIRCUIT PATTERN
 PER IPC-D300 TYPE II, CLASS C
 (COMPONENT SIDE)

- △ HOUSING MATERIAL: LIQUID CRYSTAL POLYMER
 COLOR: NATURAL.
- △ CONTACT MATERIAL: PHOSPHOR-BRONZE.
- △ CONTACT FINISH:
 UNDERPLATE (ENTIRE CONTACT):
 0.00127 MIN NICKEL.
 ON MATING SURFACES:
 CONFORMS TO ALL TESTING SPECIFIED FOR TELCORDIA
 UNCONTROLLED ENVIRONMENT.
 ON LEADS:
 0.00381 MIN TIN-LEAD OVER UNDERPLATE.
 LUBRICATION (ENTIRE CONTACT):
 SURFACE CONDITIONER PER AMP SPEC 112-1002 AFTER PLATING.
- △ PART MARKING LOCATED APPROXIMATELY AS SHOWN.
- △ OBSOLETE PARTS: OBSOLETE CIS STREAMLINING PER D.RENAUD/D.SINISI

| NO | DESCRIPTION | DATE | BY | CHK | APP |
|--------|-------------|------|--------|-----|-----|
| NO 130 | | 65 | 131.BB | △ | 330 |
| NO 118 | | 59 | 119.BB | △ | 300 |
| NO 106 | | 53 | 107.BB | △ | 270 |
| NO 94 | | 47 | 95.BB | △ | 240 |
| NO 82 | | 41 | 83.BB | △ | 210 |
| NO 70 | | 35 | 71.BB | △ | 180 |
| NO 58 | | 29 | 59.BB | △ | 150 |
| NO 46 | | 23 | 47.BB | △ | 120 |
| NO 34 | | 17 | 35.BB | △ | 90 |
| NO 22 | | 11 | 23.BB | △ | 60 |
| YES 10 | | 5 | 11.BB | △ | 30 |

| POSITIONING PEGS | C | B | A | FINISH | NO OF SIGNAL POSN | PART NUMBER |
|------------------|---|---|---|--------|-------------------|-------------|
| | | | | | | |

THIS DRAWING IS A CONTROLLED DOCUMENT. IT IS THE PROPERTY OF Teq Electronics Corporation. All rights reserved. No part of this drawing may be reproduced without the written permission of Teq Electronics Corporation.

TEQ ELECTRONICS CORPORATION
 Harrisburg, PA 17105-3608

ASSEMBLY, RECEPTACLE, SIGNAL, RIGHT ANGLE,
 Z-PACK 2mm FB, 5 ROW, SOLDER LEAD

DATE: 01/00/79 DRAWING NO: A1 00779 Q=223007
 CUSTOMER DRAWING