

4

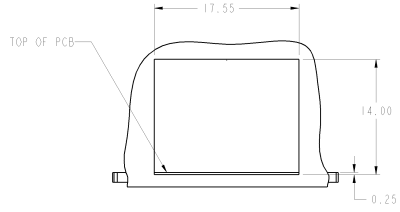
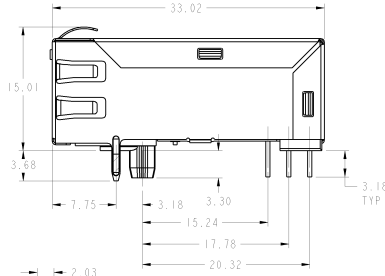
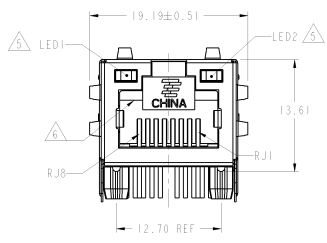
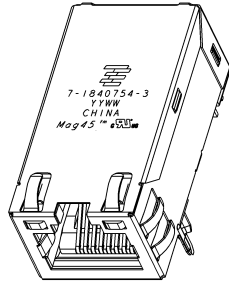
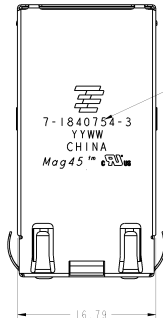
3

2

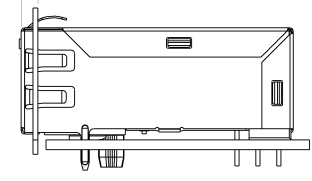
1

THIS DRAWING IS UNPUBLISHED. RELEASED FOR PUBLICATION  
 (C) Copyright copyright\_date BY TYCO ELECTRONICS CORPORATION. ALL RIGHTS RESERVED

LOC	QTY	REV	DESCRIPTION	DATE	BY	APPD
AA	00	1	INITIAL RELEASE	23JUN2008	QL	TX



SUGGESTED PANEL CUTOUT VS CUSTOMER BOARD



CONNECTOR ASSEMBLED TO PANEL AND PCB

- MATERIALS**
- HOUSING: HIGH TEMPERATURE NYLON, BLACK, UL 94V-0
  - SHIELD: BRASS, 0.20mm THICK
  - PREPLATED WITH MIN 0.76um SEMI-BRIGHT NICKEL
  - POST DIPPED WITH 2.54um MIN SAC SOLDER AT GROUND PINS.
  - CONTACT: PHOSPHOR BRONZE, 0.46mmx0.25mm
  - WITH 1.27um MIN OVERALL NICKEL UNDERPLATE AND SELECTIVE 1.27um MIN GOLD PLATING AT MATING INTERFACE
  - SOLDER TAIL: COPPER CLADDED STEEL, 0.50mm SQUARE
  - PLATED WITH 2.54um MIN MATTE TIN
  - LIGHT PIPE: POLYCARBONATE, TRANSPARENT, RATING UL 94V-0
  - LED: DIFFUSED EPOXY LENS, 0.50mm SQUARE CARBON STEEL WIREFRAME LEADS
  - PREPLATED WITH 2.03um MIN SILVER OVER 1.02um MIN NICKEL
  - OVER 1.02um MIN COPPER UNDERPLATE
  - POST PLATED WITH 2.54um MIN TIN
- MAGNETICS**
- APPLICATION: 10/100/1000 BASE-T
  - IMPEDANCE: 100 OHMS
  - TURNS RATIO (CHIP: CABLE): 1:1 ALL FOUR PAIRS
  - OPEN CIRCUIT INDUCTANCE (OCL): 350uH MIN @100kHz, 0.1VRMS, 8mA DC BIAS FROM 0°C TO 70°C, ALL FOUR PAIRS
  - ALL FOUR PAIRS ARE BI-DIRECTIONAL
  - PERFORMANCE @ 25°C:
  - INSERTION LOSS (IL): 1.1dB MAX FROM 0.5MHz TO 100MHz
  - RETURN LOSS (RL): 18dB MIN FROM 0.5MHz TO 40MHz
  - 12-20LOG(f/80)dB MIN FROM 40.1MHz TO 100MHz
  - CROSSTALK ATTENUATION: 35dB MIN FROM 0.5MHz TO 40MHz
  - 33-20LOG(f/50)dB MIN FROM 40.1MHz TO 100MHz
  - COMMON MODE REJECTION RATIO (CMRR): 30dB MIN FROM 0.5MHz TO 100MHz
  - ISOLATION VOLTAGE: COMPLIES WITH IEEE802.3 2002, PARA 40.6.1.1, ITEM b.

3. THE MAGNETICS ARE SYMMETRICAL AND SUPPORT AUTO-MDIX OPERATION.
4. OPERATING TEMPERATURE: 0°C ~ 70°C
5. LEDs ARE DRIVEN WITH CONSTANT CURRENT AT APPROX 20mA.  
 LED COLOR: DOMINANT WAVELENGTH (λD): GREEN 568 nm TYP. at IF=20mA  
 FORWARD VOLTAGE (VF): GREEN 2.2V TYP. at IF=20mA  
 DOMINANT WAVELENGTH (λD): YELLOW 588 nm TYP. at IF=20mA  
 FORWARD VOLTAGE (VF): YELLOW 2.1V TYP. at IF=20mA  
 DOMINANT WAVELENGTH (λD): ORANGE 605 nm TYP. at IF=20mA  
 FORWARD VOLTAGE (VF): ORANGE 2.1V TYP. at IF=20mA
6. RJ45 CAVITY CONFORMS TO FCC RULES AND REGULATION PART 68 SUBPART F.
7. TYCO ELECTRONICS LOGO, PART NUMBER, DATE CODE, COUNTRY OF ORIGIN, AND AGENCY LOGO ARE TO BE MARKED IN APPROXIMATE LOCATION AS SHOWN.
8. THE PART IS RECOMMENDED FOR WAVE SOLDERING PROCESS, PEAK WAVE SOLDERING TEMPERATURE IS 265°C MAX, 10 SECONDS MAX.

THIS PRINT IS  
**PRELIMINARY**  
 UNQUALIFIED PRODUCT  
 CONTACT PRODUCT ENGINEERING  
 BEFORE USING THIS PRINT

GREEN/ORANGE	YELLOW	7-1840754-3
LED1	LED2	PART NUMBER

DIMENSIONS		TOLERANCES UNLESS OTHERWISE SPECIFIED		DATE: JUN-08		TYCO ELECTRONICS	
mm		mm		DATE	BY	DATE	BY
				23 JUN 2008	QL	23 JUN 2008	TX
				PRODUCT SPEC	108-2100	APPLICATION SPEC	
				WEIGHT		DRAWING NO	A2100778
				CUSTOMER DRAWING		SCALE	N.TS
						SHEET	1 OF 2
						REV	1

4

3

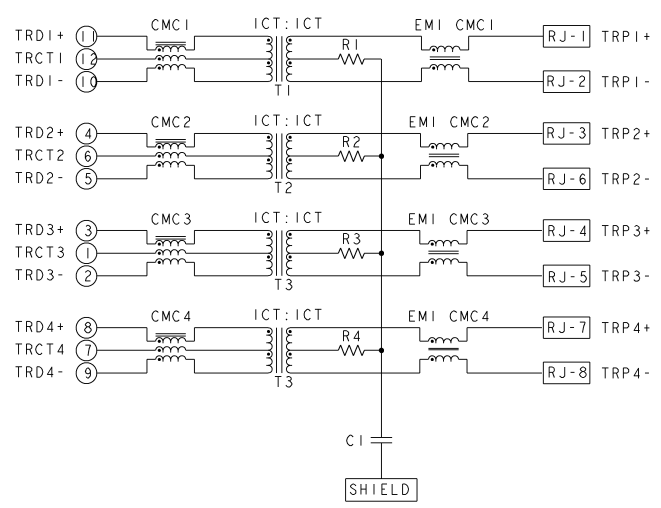
2

1

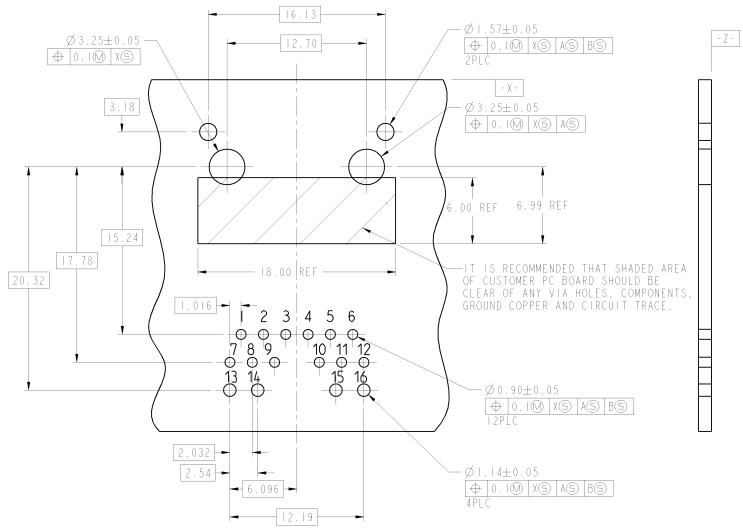
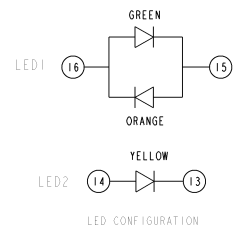
THIS DRAWING IS UNPUBLISHED. RELEASED FOR PUBLICATION.  
(C) Copyright copyright\_text BY TYCO ELECTRONICS CORPORATION. ALL RIGHTS RESERVED.

LOC	QTY	REV	DESCRIPTION	DATE	BY	APPD
AA	00		SEE SHEET 1			

### IG61 GIGABIT CIRCUIT



R1 - R4 = 75 Ω , 1/16W, 5% RESISTORS  
 C1 = 1000pF, 3kV CAPACITOR



SUGGESTED CUSTOMER PCB COMPONENT SIDE  
 SCALE 2:1

THIS PRINT IS  
**PRELIMINARY**  
 UNQUALIFIED PRODUCT  
 CONTACT PRODUCT ENGINEERING  
 BEFORE USING THIS PRINT

DIMENSIONS: mm		OPERATOR: J. XIAO	DATE: 24-Mar-08	TYCO ELECTRONICS ChangPing, China
MATERIAL: SEE NOTE 1		FINISH: SEE NOTE	PRODUCT SPEC: 108-2100	RESTRICTED TO: -
WEIGHT: -		CUSTOMER DRAWING	SCALE: NTS	SHEET 2 OF 2

AMP 1471-9 REV 3/04/2008