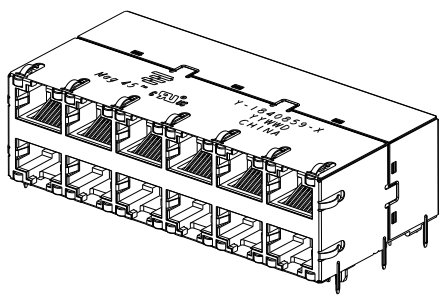
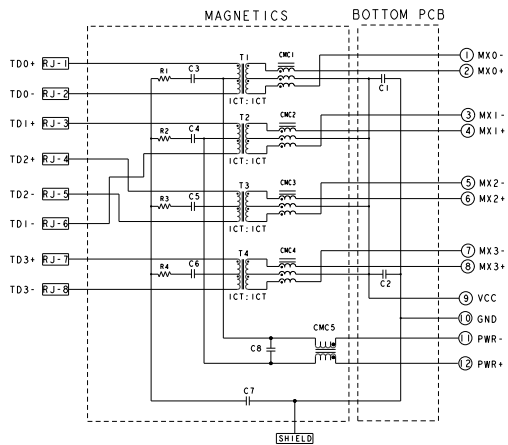


REVISONS		DATE	BY	APP
1	INITIAL RELEASE			



S9VG65 GIGABIT PoE CIRCUIT
 TOP AND BOTTOM PORTS



C1-C2=10NF, 50V, X7R,CAPACITORS
 C3-C6=22NF, 100V,CAPACITORS
 C7=1000PF, 3KV,CAPACITORS
 C8=68NF, 100V,CAPACITORS
 R1-R4=75 OHM, 1/16W,RESISTORS

THIS PRODUCT HAS NOT COMPLETED
 VALIDATION/QUALIFICATION TESTING

- MATERIALS:**
 PLASTIC HOUSING: BLACK, THERMOPLASTIC FLAMMABILITY RATING UL 94V-0
 SHIELD: BRASS, PREPLATED WITH 0.76um MIN SEMI-BRIGHT NICKEL,
 POST-DIPPED WITH 2.54um MIN SAC SOLDER ON SOLDER TAILS,
 CONTACTS: PHOSPHOR BRONZE, 1.27um MIN OVERALL NICKEL UNDERPLATE
 WITH SELECT 1.27um MIN GOLD AT MATING INTERFACE AND 2.54um MIN
 MATTE TIN ON SOLDER TAILS.
 LED: DIFFUSED EPOXY LENS, CARBON STEEL LEAD FRAME TAILS OF LED
 ARE PREPLATED WITH 2.03um MIN SILVER OVER 1.02um MIN NICKEL
 UNDERPLATE OVER 1.02um MIN COPPER UNDERPLATE - POST-PLATED WITH
 2.54um MIN MATTE TIN AND/OR SAC SOLDER DIP OR PURE TIN SOLDER DIP

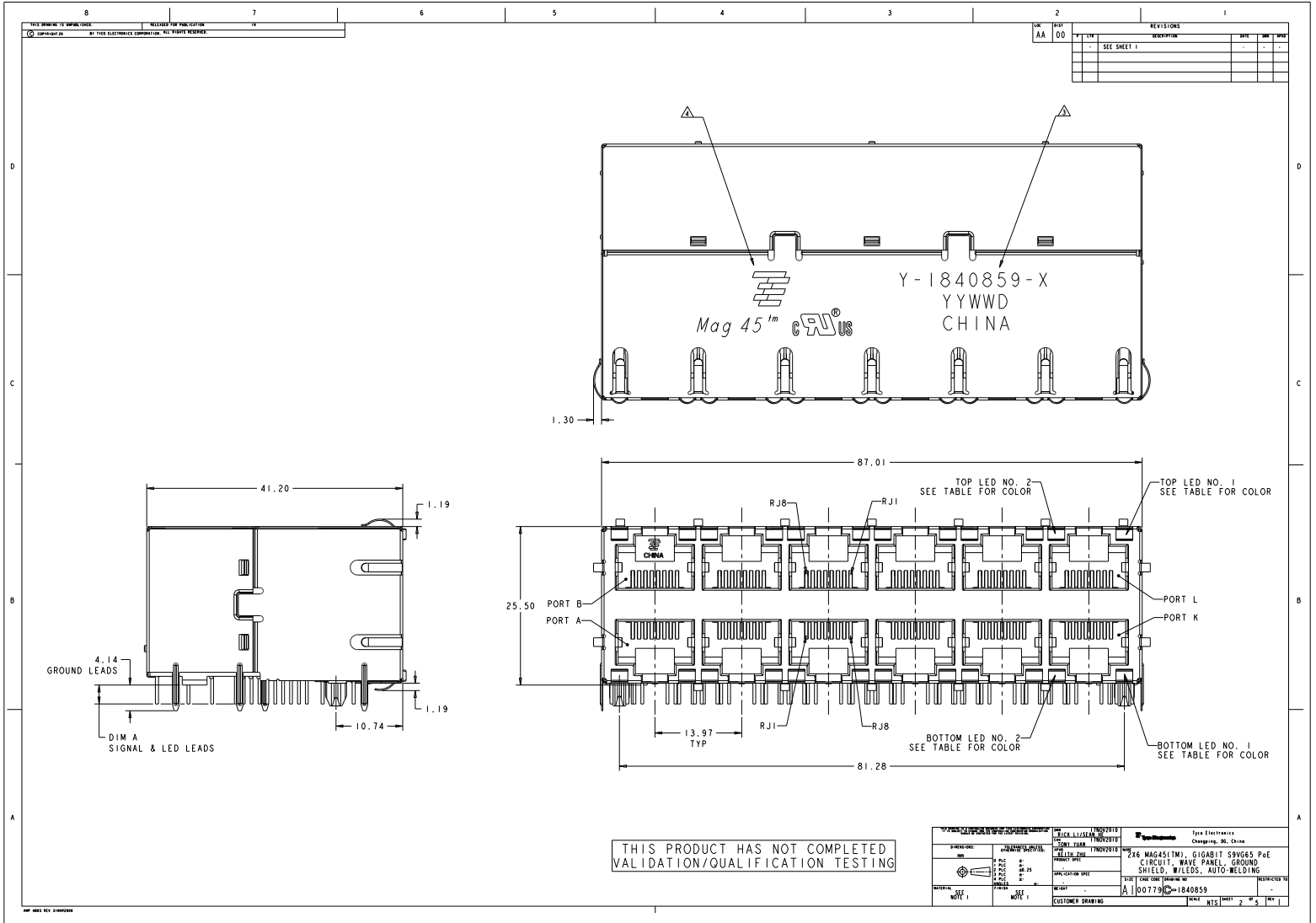
MAGNETICS:
 APPLICATION: 10/100/1000 BASE-T, PoE
 IMPEDANCE: 100ohms
 TURNS RATIO (CHIP: CABLE): 1:1 ALL FOUR PAIRS
 OPEN CIRCUIT INDUCTANCE (OCL): 350uH MIN @100KHz, 0.1VRMS,
 8mA DC BIAS FROM 0°C TO 70°C, ALL FOUR PAIRS.
 ALL FOUR PAIRS BI-DIRECTIONAL
 POE CURRENT: 350mA DC MAX
 PERFORMANCE @25°C:
 INSERTION LOSS (IL): 1.1dB MAX FROM 1.0MHz TO 100MHz
 RETURN LOSS (RL): 18dB MIN FROM 1.0MHz TO 40MHz
 |2-20LOG(I/F80)dB MIN FROM 40.1MHz TO 100MHz
 CROSSTALK ATTENUATION: 35dB MIN FROM 1.0MHz TO 40MHz
 |3-20LOG(I/F50)dB MIN FROM 40.1MHz TO 100MHz
 COMMON MODE REJECTION RATIO (CMRR):
 30dB MIN FROM 1.0MHz TO 100MHz
 ISOLATION VOLTAGE: 1500VAC (MAX) AT 60Hz FOR 60 SECS WITH ALL PORTS CONNECTED.

MAGNETICS:
 PART NUMBER, DATE CODE AND COUNTRY OF ORIGIN LOCATED IN APPROXIMATE AREA SHOWN
 DATE CODE: YYWD WHERE "YY" IS YEAR, "WW" IS WORK WEEK, "D" IS DAY OF WEEK,
 WITH SUNDAY =1

**TYCO ELECTRONICS LOGO AND AGENCY APPROVAL LOGO ARE LOCATED
 IN APPROXIMATE AREA SHOWN.**
- OPERATING TEMP: FROM 0°C TO 70°C.
- RJ45 CAVITY CONFORMS TO FCC RULES AND REGULATION PART 68 SUBPART F.
- INDICATED MAGNETIC CONNECTIONS ARE SYMMETRICAL AND SUPPORT AUTO-MDI/MDIX.
- DATUM AND BASIC DIMENSION ESTABLISHED BY CUSTOMER.
- DIMENSION ESTABLISHED BY CUSTOMER, BUT MAY NOT BE
 GREATER THAN 5.08mm.
- LEDS ARE DRIVEN WITH CONSTANT CURRENT AT APPROX 20mA
 LED COLOR: DOMINANT WAVELENGTH (λD): GREEN 568 nm TYP. @ IF=20mA
 FORWARD VOLTAGE (VF): GREEN 2.2V TYP. @ IF=20mA
 DOMINANT WAVELENGTH (λD): YELLOW 588 nm TYP. @ IF=20mA
 FORWARD VOLTAGE (VF): YELLOW 2.1V TYP. @ IF=20mA
 DOMINANT WAVELENGTH (λD): ORANGE 605 nm TYP. @ IF=20mA
 FORWARD VOLTAGE (VF): ORANGE 2.1V TYP. @ IF=20mA
- THESE PARTS ARE RECOMMENDED FOR WAVE SOLDERING PROCESS, PEAK TEMPERATURE 260°C
 FOR 5 SECONDS

DIM A	NO. 2	BOTTOM LED NO. 1	BOTTOM LED NO. 2	TOP LED NO. 1	TOP LED NO. 2	PART NO.
4.10	GREEN/YELLOW	GREEN/YELLOW	GREEN/YELLOW	GREEN/YELLOW	GREEN/YELLOW	3-1840859-4
3.04	GREEN/ORANGE	GREEN/ORANGE	GREEN/ORANGE	GREEN/ORANGE	GREEN/ORANGE	1840859-7
3.04	GREEN	GREEN/ORANGE	GREEN	GREEN/ORANGE	GREEN/ORANGE	1840859-6
3.04	GREEN/YELLOW	GREEN	GREEN/YELLOW	GREEN	GREEN	1840859-5
3.04	GREEN/YELLOW	GREEN/YELLOW	GREEN/YELLOW	GREEN/YELLOW	GREEN/YELLOW	1840859-4
3.04	GREEN	YELLOW	GREEN	GREEN	YELLOW	1840859-3
3.04	YELLOW	GREEN	GREEN	GREEN	YELLOW	1840859-2
3.04	GREEN	GREEN	GREEN	GREEN	GREEN	1840859-1

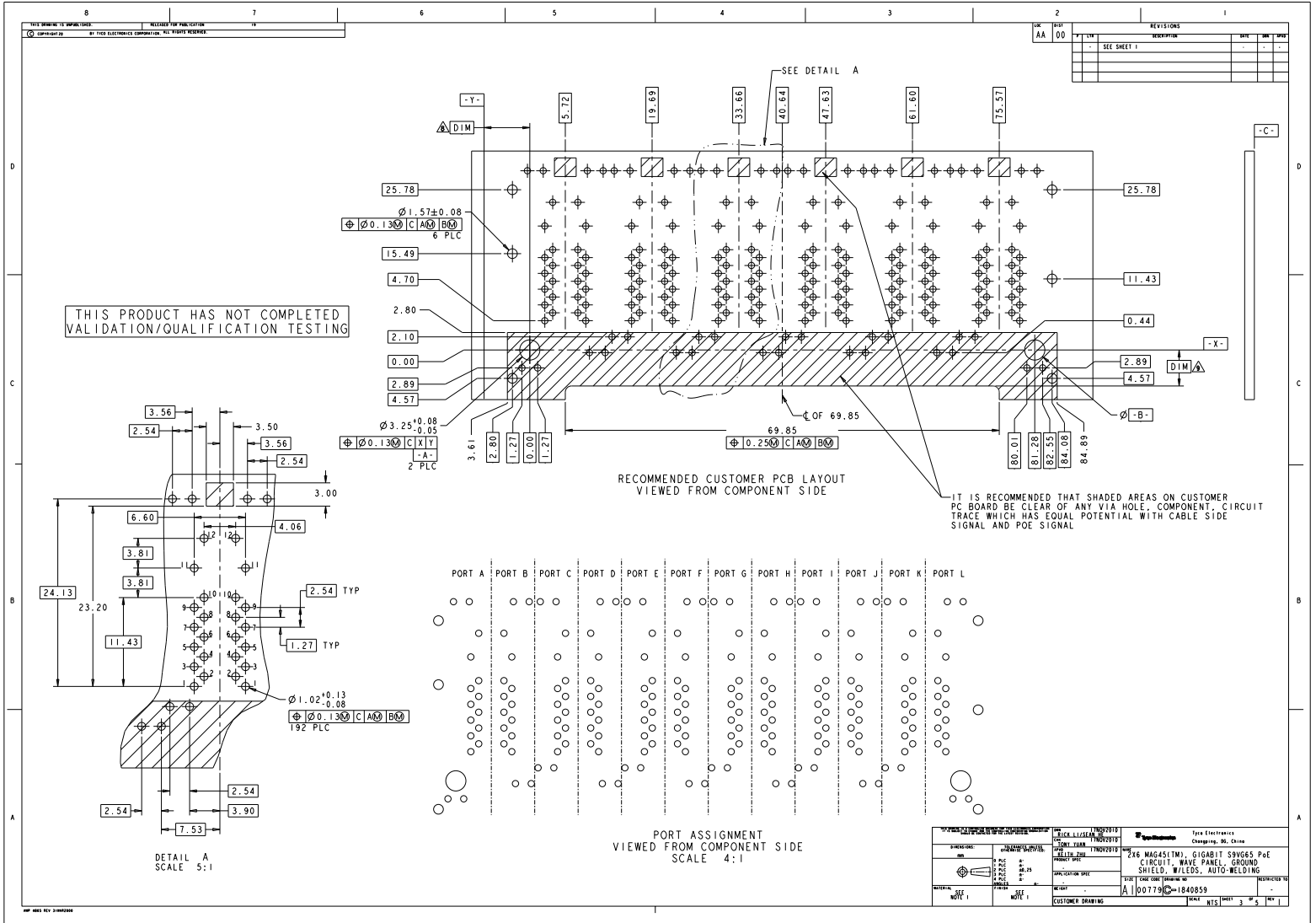
DATE	BY	APP	REV	DESCRIPTION
00	AA			INITIAL RELEASE



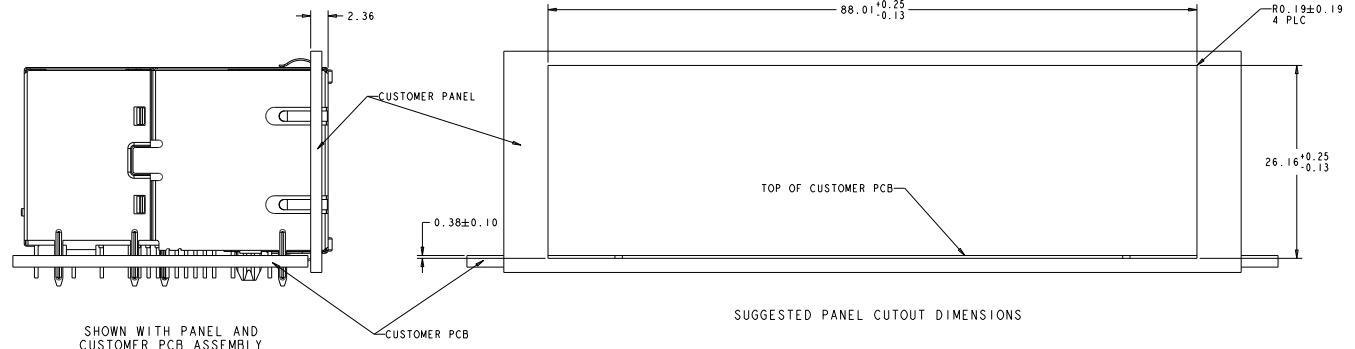
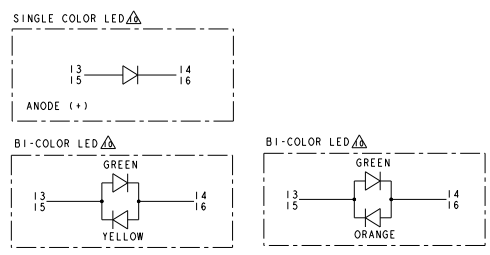
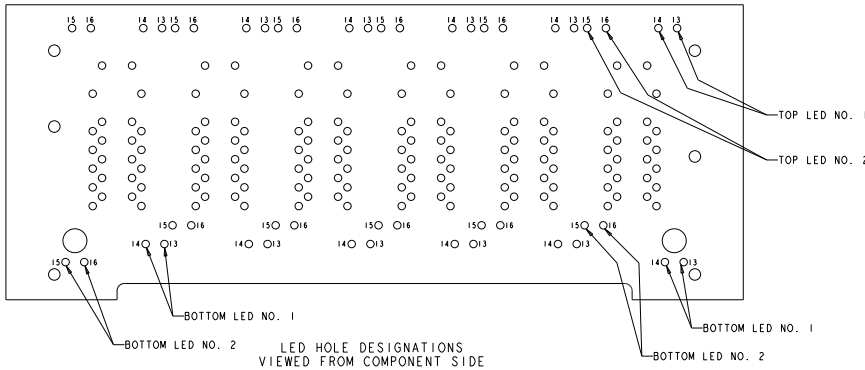
REVISONS		DATE	BY	APP
AA	00			

THIS PRODUCT HAS NOT COMPLETED
VALIDATION/QUALIFICATION TESTING

APPROVAL: DATE: 08/25/2015		CHECKED: DATE: 08/25/2015		Type Electronics Chicago, IL, USA	
PART NO: DIM: QTY: PRICE: DATE:		PART NO: DIM: QTY: PRICE: DATE:		2x6 MAG451M 1.0GABIT SMD P&E SHIELD, W/LEDS, AUTO-WELDING	
MATERIAL: NOTE 1		MATERIAL: NOTE 1		WEIGHT: A 00779 1840859	
CUSTOMER DRAWING		DATE: NIS		SHEET 2 OF 5	



REVISONS		DATE	BY	APP
00	AA			



THIS PRODUCT HAS NOT COMPLETED
VALIDATION/QUALIFICATION TESTING

TRIC ELECTRONICS CORPORATION 1840859		TRIC ELECTRONICS Chicago, IL, USA	
PART NO: 1840859	QTY: 1	DATE: 11/20/2018	REV: 00
DIMENSIONS: 26.16 (+0.25/-0.13)	WEIGHT: 0.0077g	MATERIAL: 1840859	FINISH: NIS
DRAWING NO: 1840859		SHEET NO: 5	

THIS DRAWING IS UNCLASSIFIED
 RELEASED FOR PUBLIC USE
 BY THE ELECTRONICS CORPORATION. ALL RIGHTS RESERVED

REVISONS			
REV	DATE	DESCRIPTION	BY
-	-	SEE SHEET 1	-

1840859				STOCK DISPOSITION			
Z16 MAGASITM1, GIGABIT SV065 P&E, WAVE PANEL, GROUND SHIELD, W/LEDS, AUTO-WELDING				A: CONTINUE AS IS B: REWORK C: SCRAP			
D: USE OLD FIRST E: PARTS TO CONFORM F: OTHER				REVISION HISTORY			
DATE	REV	CHANGES	REASON	APPROVAL	INVENTORY (A,B,C,D,E,F)	WORK IN PROCESS (A,B,C,D)	SUPPLIER ORDERS (A,E,F)
17NOV2010	1	INITIAL RELEASE	INITIAL RELEASE	HEIYN ZHU	-	-	-

THIS PRODUCT HAS NOT COMPLETED
 VALIDATION/QUALIFICATION TESTING

DRAWING NO: 1840859 REV: 1 DATE: 17NOV2010		TITLE: Z16 MAGASITM1, GIGABIT SV065 P&E SHIELD, W/LEDS, AUTO-WELDING	
PART NO: 1840859 QTY: 1		DRAWN BY: HEIYN ZHU CHECKED BY: HEIYN ZHU DATE: 17NOV2010	
MATERIAL: SEE NOTE 1		CUSTOMER DRAWING: A 00779 1840859	