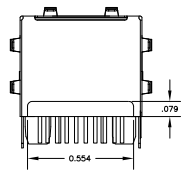
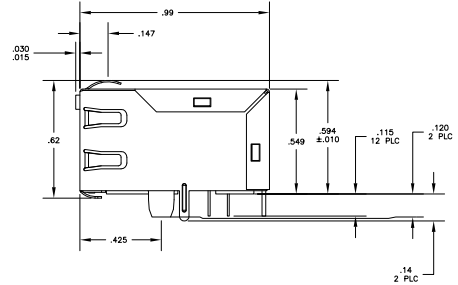
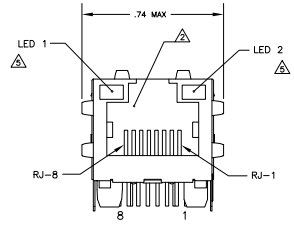
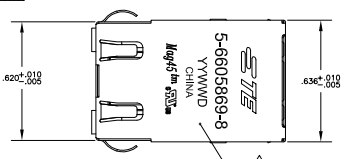


THIS DRAWING IS UNPUBLISHED
 ALL RIGHTS RESERVED

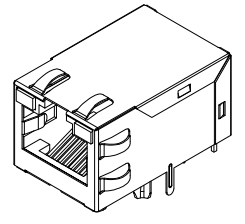
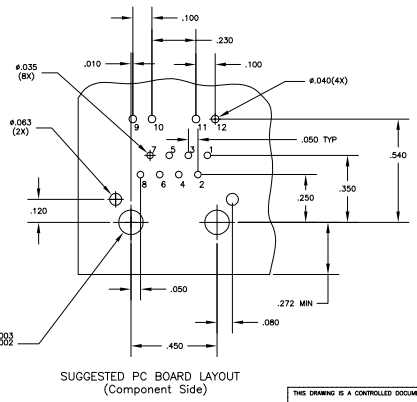
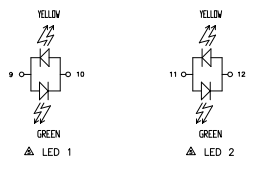
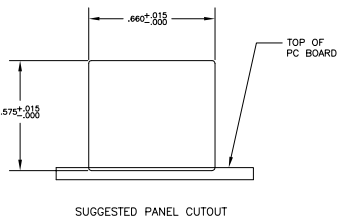
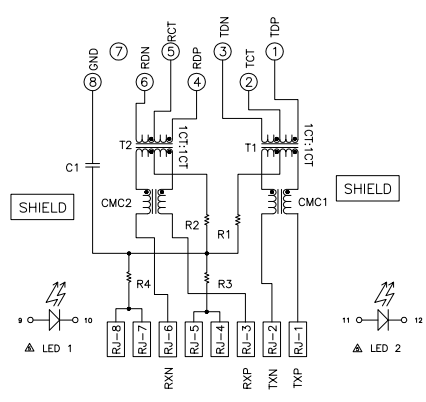
REV	DATE	REVISIONS	BY	CHK	APP
AA	00				
F		REV PER ECO-11-011343			TY KZ
G		ECO-11-013927			2002/01/11 EL LR



- △ MATERIALS:
 HOUSING - THERMOPLASTIC PET POLYESTER FLAMMABILITY RATING UL 94V-0
 SHIELD - .001" THICK C28000 BRASS PREPLATED WITH 30.0 INCH MIN SEMI-BRIGHT NICKEL, SOLDER TABS POST-DIPPED WITH SAC SOLDER
 MOD JACK CONTACTS - .057" x .098" PHOSPHOR BRONZE, 50.0 INCH MIN OVERALL NICKEL UNDERPLATE, WITH SELECT 50.0 INCH MIN HARD GOLD FINISH PLATE. SOLDER TAILS WITH 100.0 INCH MIN MATTE TIN AND/OR SAC SOLDER DIP
 LIGHT EMITTING DIODE(LED) - DIFFUSED EPOXY LENS, .020" x .020" CARBON STEEL WIREFRAME LEADS PREPLATED WITH 80.0 INCH SILVER OVER 4.0 INCH NICKEL UNDERPLATE OVER 40.0 INCH COPPER UNDERPLATE, POST-PLATED WITH 100.0 INCH MIN MATTE TIN AND/OR SAC SOLDER DIP OR PURE TIN SOLDER DIP.
- △ RJ45 JACK CAVITY CONFORMS TO FCC RULES AND REGULATIONS PART 68, SUB PART F.
- △ MAGNETICS
 -APPLICATION: 10/100 BASE-T
 -IMPEDANCE: 100 OHMS
 -TURNS RATIO (CHP CABLE): TX = 11, RX = 11
 -OPEN CIRCUIT INDUCTANCE (OCL): 350.0 NMIN @ 100MHz, 0.1VRMS
 -BIAS BIAS FROM 0°C TO 25°C, TX AND RX
 -PERFORMANCE @ 25°C
 INSERTION LOSS (IL): 1.5dB MAX FROM 0.5MHz TO 100MHz
 RETURN LOSS (RL): 15dB MIN FROM 0.5MHz TO 30MHz
 18-20LOG(f/30dB) MIN FROM 30 MHz TO 60MHz
 15dB MIN FROM 60 MHz TO 80MHz
 CROSSTALK ATTENUATION: 35dB MIN FROM 0.5MHz TO 40MHz
 33-20LOG(f/50dB) MIN FROM 40.1MHz TO 100MHz
 COMMON MODE REJECTION RATIO (CMRR): 30dB MIN FROM 0.5MHz TO 100MHz
 ISOLATION VOLTAGE: 2550VDC (MAX) FOR 60 SECONDS WITH A RISE TIME OF 500V/SEC.
- 4. OPERATING TEMPERATURE FROM 0°C TO -10°C.
- △ LEDS WITHOUT BUILT-IN RESISTOR
 LEDS ARE DRIVEN WITH CONSTANT CURRENT AT APPROX 20 mA
 LED COLOR: DOMINANT WAVELENGTH (LWD): GREEN 568 nm TYP @ IF=20 mA
 FORWARD VOLTAGE (VF): GREEN 2.2V TYP @ IF=20 mA
 DOMINANT WAVELENGTH (LWD): YELLOW 588 nm TYP @ IF=20 mA
 FORWARD VOLTAGE (VF): YELLOW 2.1V TYP @ IF=20 mA
- △ INDICATED CONNECTIONS ARE FOR NIC CONFIGURATION. THE MAGNETICS ARE SYMMETRIC, AND SUPPORT AUTO-MDI/MIDX.
- △ TE CONNECTIVITY LOGO, PART NUMBER, DATE CODE, COUNTRY OF ORIGIN AND AGENCY APPROVAL MARKING IN APPROXIMATE LOCATION SHOWN.
- 8. THESE PARTS ARE RECOMMENDED FOR WAVE SOLDERING PROCESS. PREHEAT TEMPERATURE IS 120°C TO 160°C, 10 SECONDS TO 180 SECONDS. PEAK WAVE SOLDERING TEMPERATURE IS 260°C MAX, 10 SECONDS MAX.

ELECTRICAL:

26P1 MAGNETIC SCHEMATIC: △△



GREEN	YELLOW	5-6605869-8
GREEN	GREEN	5-6605869-7
YELLOW	GREEN	6605869-9
GREEN/YELLOW	GREEN/YELLOW	6605869-6
LED 1	LED 2	PART NUMBER

C1=1000 pF, 2KV CAPACITOR
 R1-R4 =75 Ohms, 1/16 W RESISTORS
 LED CONFIGURATION FOR 6605869-6 ONLY

THIS DRAWING IS A CONTROLLED DOCUMENT. IT IS THE PROPERTY OF TE CONNECTIVITY. IT IS TO BE USED ONLY FOR THE PROJECT AND FOR THE QUANTITY SPECIFIED. IT IS NOT TO BE REPRODUCED, COPIED, OR TRANSMITTED IN ANY FORM OR BY ANY MEANS, ELECTRONIC OR MECHANICAL, INCLUDING PHOTOCOPYING, RECORDING, OR BY ANY INFORMATION STORAGE AND RETRIEVAL SYSTEM. WITHOUT THE WRITTEN PERMISSION OF TE CONNECTIVITY.

TE CONNECTIVITY
 1x1 MAGNETIC SHLD, 6 WAVE PIN, GND, W/REAR LED LEADS, 26P1 MAGNETIC CIRCUIT

REV: 108-2100
 DATE: 11-01-03
 BY: [Signature]
 CHECKED: [Signature]
 APPROVED: [Signature]

TE CONNECTIVITY
 100779-6605869
 NTS